

Client Name: HARMAN INTERNATIONAL INDUSTRIES, INCORPORATED  
 Client Address: 8500 BALBOA BLVD, NORTHRIDGE, CA 91329, UNITED STATES

Sample Name: Portable Bluetooth Speaker  
 Tested Basic Model No.: GO5D  
 Client Ref. Information: GO5  
 Manufacturer: HARMAN INTERNATIONAL INDUSTRIES, INCORPORATED  
 Manufacturer Address: 8500 BALBOA BLVD, NORTHRIDGE, CA 91329, UNITED STATES  
 Supplier: Ganzhou Dehuida Technology co., Ltd  
 Brand: JBL

The above sample(s) and information were provided by the client.

SGS Job No.: SZP25-046342  
 Sample Receiving Date: Sep 09, 2025  
 Verification Period: Sep 09, 2025 ~ Nov 10, 2025  
 Verification Requested: With reference to RoHS Directive (EU) 2015/863 amending 2011/65/EU.  
 Verification Method(s): Please refer to next page(s).  
 Verification Result(s): Please refer to next page(s).

**Test Result Summary:**

| Test Items  | Conclusion |
|---|------------|
| EU RoHS Directive (EU) 2015/863 amending Annex II to Directive 2011/65/EU - Lead, Mercury, Cadmium, Hexavalent chromium, Polybrominated biphenyls (PBB), Polybrominated diphenyl ethers (PBDE), Bis(2-ethylhexyl) phthalate (DEHP), Butyl benzyl phthalate (BBP), Dibutyl phthalate (DBP) and Diisobutyl phthalate (DIBP) | Pass       |

Signed for and on behalf of  
 SGS-CSTC Standards Technical Services Co., Ltd. Guangzhou Branch



Catty Gong  
 Approved Signatory

Scan to see the report



EC42ED6D



Unless otherwise agreed in writing, this document is issued by the Company subject to its General Conditions of Service printed overleaf, available on request or accessible at <https://www.sgs.com/en/Terms-and-Conditions>. Attention is drawn to the limitation of liability, indemnification and jurisdiction issues defined therein. Any holder of this document is advised that information contained hereon reflects the Company's findings at the time of its intervention only and within the limits of Client's instructions, if any. The Company's sole responsibility is to its Client and this document does not exonerate parties to a transaction from exercising all their rights and obligations under the transaction documents. This document cannot be reproduced except in full, without prior written approval of the Company. Any unauthorized alteration, forgery or falsification of the content or appearance of this document is unlawful and offenders may be prosecuted to the fullest extent of the law. Unless otherwise stated the results shown in this test report refer only to the sample(s) tested.  
**Attention: To check the authenticity of testing /inspection report & certificate, please contact us at telephone: (86-755) 8307 1443, or email: CN.Doccheck@sgs.com**

**Verification Method(s):**

1. With reference to IEC 62321-2:2021, disassembly and disjointment were performed for the submitted samples.
2. With reference to IEC 62321-1:2013, tests were performed for the samples indicated by the photos in this report.
  - (1) With reference to IEC 62321-3-1:2013, screening by EDXRF spectroscopy.
  - (2) Wet chemical test method: With reference to IEC 62321-4:2013+A1:2017, IEC62321-5:2013, IEC 62321-7-1:2015, IEC 62321-7-2:2017, IEC 62321-12:2023, IEC 62321-6:2015 and IEC62321-8:2017 , analyzed by ICP-OES,UV-Vis and GC-MS.



Verification Part Description:

| SN ID | Sample No. | SGS Sample ID           | Description                                      |
|-------|------------|-------------------------|--|
| SN1   | A1         | CAN25-0224576-0001.C001 | Black fibre sheet                                |
| SN2   | A2         | CAN25-0224576-0001.C002 | Black/orange adhesive rubber part                |
| SN3   | A3         | CAN25-0224576-0001.C003 | Black/grey fibre tube                            |
| SN4   | A4         | CAN25-0224576-0001.C004 | Black plastic cover                              |
| SN5   | A5         | CAN25-0224576-0001.C005 | Translucent rubber sheet                         |
| SN6   | A6         | CAN25-0224576-0001.C006 | Black rubber button with grey printing           |
| SN7   | A7         | CAN25-0224576-0001.C007 | Black adhesive rubber button with grey printing  |
| SN8   | A8         | CAN25-0224576-0001.C008 | Black rubber part                                |
| SN9   | A9         | CAN25-0224576-0001.C009 | Black plastic part                               |
| SN10  | A10        | CAN25-0224576-0001.C010 | Translucent plastic part                         |
| SN11  | A11        | CAN25-0224576-0001.C011 | Black rubber sheet                               |
| SN12  | A12        | CAN25-0224576-0001.C012 | Silvery metal sheet                              |
| SN13  | A13        | CAN25-0224576-0001.C013 | Black surfaced metal screw                       |
| SN14  | A14        | CAN25-0224576-0001.C014 | Black plastic shell                              |
| SN15  | A15        | CAN25-0224576-0001.C015 | Black adhesive fibre sheet                       |
| SN16  | A16        | CAN25-0224576-0001.C016 | Translucent adhesive rubber sheet                |
| SN17  | A17        | CAN25-0224576-0001.C017 | Translucent rubber part                          |
| SN18  | A18        | CAN25-0224576-0001.C018 | Black adhesive foam part                         |
| SN19  | A19        | CAN25-0224576-0001.C019 | Black plastic part                               |
| SN20  | A20        | CAN25-0224576-0001.C020 | Black rubber ring                                |
| SN21  | A21        | CAN25-0224576-0001.C021 | Black plastic sheet                              |
| SN22  | A22        | CAN25-0224576-0001.C022 | Black paper ring                                 |
| SN23  | A23        | CAN25-0224576-0001.C023 | White paper sheet                                |
| SN24  | A24        | CAN25-0224576-0001.C024 | Brown glue                                       |
| SN25  | A25        | CAN25-0224576-0001.C025 | Copper-colored enamel-insulated wire             |
| SN26  | A26        | CAN25-0224576-0001.C026 | Copper-colored material thread                   |
| SN27  | A27        | CAN25-0224576-0001.C027 | Brown fibre sheet                                |
| SN28  | A28        | CAN25-0224576-0001.C028 | Black surfaced metal frame                       |
| SN29  | A29        | CAN25-0224576-0001.C029 | Translucent glue                                 |
| SN30  | A30        | CAN25-0224576-0001.C030 | Silvery metal solder                             |
| SN31  | A31        | CAN25-0224576-0001.C031 | Silvery metal part                               |
| SN32  | A32        | CAN25-0224576-0001.C032 | White paper sheet                                |
| SN33  | A33        | CAN25-0224576-0001.C033 | White plastic part                               |
| SN34  | A34        | CAN25-0224576-0001.C034 | Silvery metal terminal                           |
| SN35  | A35        | CAN25-0224576-0001.C035 | Black plastic (wire insulation)                  |
| SN36  | A36        | CAN25-0224576-0001.C036 | Red plastic (wire insulation)                    |
| SN37  | A37        | CAN25-0224576-0001.C037 | Silvery metal wire                               |
| SN38  | A38        | CAN25-0224576-0001.C038 | Black surfaced metal shell                       |
| SN39  | A39        | CAN25-0224576-0001.C039 | Silvery metal sheet                              |
| SN40  | A40        | CAN25-0224576-0001.C040 | Silvery magnet                                   |
| SN41  | A41        | CAN25-0224576-0001.C041 | Black adhesive foam part                         |
| SN42  | A42        | CAN25-0224576-0001.C042 | Red glue   |
| SN43  | A43        | CAN25-0224576-0001.C043 | White adhesive plastic sheet with black printing |
| SN44  | A44        | CAN25-0224576-0001.C044 | Silvery metal shell with black printing          |
| SN45  | A45        | CAN25-0224576-0001.C045 | Black plastic shell                              |
| SN46  | A46        | CAN25-0224576-0001.C046 | Green "PCB"                                      |



Unless otherwise agreed in writing, this document is issued by the Company subject to its General Conditions of Service printed overleaf, available on request or accessible at <https://www.sgs.com/en/Terms-and-Conditions>. Attention is drawn to the limitation of liability, indemnification and jurisdiction issues defined therein. Any holder of this document is advised that information contained hereon reflects the Company's findings at the time of its intervention only and within the limits of Client's instructions, if any. The Company's sole responsibility is to its Client and this document does not exonerate parties to a transaction from exercising all their rights and obligations under the transaction documents. This document cannot be reproduced except in full, without prior written approval of the Company. Any unauthorized alteration, forgery or falsification of the content or appearance of this document is unlawful and offenders may be prosecuted to the fullest extent of the law. Unless otherwise stated the results shown in this test report refer only to the sample(s) tested.

Attention: To check the authenticity of testing/inspection report & certificate, please contact us at telephone: (86-755) 8307 1443, or email: [CN.Doccheck@sgs.com](mailto:CN.Doccheck@sgs.com)

| SN ID | Sample No. | SGS Sample ID           | Description   |
|-------|------------|-------------------------|---|
| SN47  | A47        | CAN25-0224576-0001.C047 | Beige plastic part                                  |
| SN48  | A48        | CAN25-0224576-0001.C048 | Silvery metal shell                                 |
| SN49  | A49        | CAN25-0224576-0001.C049 | Beige plastic part                                  |
| SN50  | A50        | CAN25-0224576-0001.C050 | Black plastic sheet                                 |
| SN51  | A51        | CAN25-0224576-0001.C051 | Black rubber cover                                  |
| SN52  | A52        | CAN25-0224576-0001.C052 | Silver-gray metal sheet                             |
| SN53  | A53        | CAN25-0224576-0001.C053 | Silvery metal pin                                   |
| SN54  | A54        | CAN25-0224576-0001.C054 | Brown paper sheet with liquid                       |
| SN55  | A55        | CAN25-0224576-0001.C055 | Silvery metal sheet                                 |
| SN56  | A56        | CAN25-0224576-0001.C056 | Silvery metal sheet                                 |
| SN57  | A57        | CAN25-0224576-0001.C057 | Black plastic cover                                 |
| SN58  | A58        | CAN25-0224576-0001.C058 | Silvery metal pin                                   |
| SN59  | A59        | CAN25-0224576-0001.C059 | Black body with brown printing                      |
| SN60  | A60        | CAN25-0224576-0001.C060 | Golden metal pin                                    |
| SN61  | A61        | CAN25-0224576-0001.C061 | Black rubber ring                                   |
| SN62  | A62        | CAN25-0224576-0001.C062 | Silvery metal shell                                 |
| SN63  | A63        | CAN25-0224576-0001.C063 | Golden/silvery metal pin                            |
| SN64  | A64        | CAN25-0224576-0001.C064 | Orange plastic part                                 |
| SN65  | A65        | CAN25-0224576-0001.C065 | Silvery metal sheet                                 |
| SN66  | A66        | CAN25-0224576-0001.C066 | Black body  |
| SN67  | A67        | CAN25-0224576-0001.C067 | Dark grey body                                      |
| SN68  | A68        | CAN25-0224576-0001.C068 | Black body  |
| SN69  | A69        | CAN25-0224576-0001.C069 | Black body with brown printing                      |
| SN70  | A70        | CAN25-0224576-0001.C070 | Dark grey body with black printing                  |
| SN71  | A71        | CAN25-0224576-0001.C071 | Green "PCB"   |
| SN72  | A72        | CAN25-0224576-0001.C072 | Silvery metal solder                                |
| SN73  | A73        | CAN25-0224576-0001.C073 | Grey body with black printing                       |
| SN74  | A74        | CAN25-0224576-0001.C074 | Black body with brown printing                      |
| SN75  | A75        | CAN25-0224576-0001.C075 | Dark grey body with black printing                  |
| SN76  | A76        | CAN25-0224576-0001.C076 | Black adhesive foam sheet                           |
| SN77  | A77        | CAN25-0224576-0001.C077 | Silvery adhesive plastic sheet with black printing  |
| SN78  | A78        | CAN25-0224576-0001.C078 | Black adhesive fibre sheet                          |
| SN79  | A79        | CAN25-0224576-0001.C079 | Brown translucent adhesive plastic sheet            |
| SN80  | A80        | CAN25-0224576-0001.C080 | Black glue  |
| SN81  | A81        | CAN25-0224576-0001.C081 | Transparent adhesive plastic sheet                  |
| SN82  | A82        | CAN25-0224576-0001.C082 | Black body  |
| SN83  | A83        | CAN25-0224576-0001.C083 | Green "PCB"   |
| SN84  | A84        | CAN25-0224576-0001.C084 | Silvery metal solder                                |
| SN85  | A85        | CAN25-0224576-0001.C085 | Transparent glue                                    |
| SN86  | A86        | CAN25-0224576-0001.C086 | Black plastic (wire insulation) with white printing |
| SN87  | A87        | CAN25-0224576-0001.C087 | White plastic (wire insulation)                     |
| SN88  | A88        | CAN25-0224576-0001.C088 | Yellow plastic (wire insulation)                    |
| SN89  | A89        | CAN25-0224576-0001.C089 | Red plastic (wire insulation) with black printing   |
| SN90  | A90        | CAN25-0224576-0001.C090 | Golden metal terminal                               |
| SN91  | A91        | CAN25-0224576-0001.C091 | White plastic part                                  |
| SN92  | A92        | CAN25-0224576-0001.C092 | Transparent adhesive plastic sheet                  |



Unless otherwise agreed in writing, this document is issued by the Company subject to its General Conditions of Service printed overleaf, available on request or accessible at <https://www.sgs.com/en/Terms-and-Conditions>. Attention is drawn to the limitation of liability, indemnification and jurisdiction issues defined therein. Any holder of this document is advised that information contained herein reflects the Company's findings at the time of its intervention only and within the limits of Client's instructions, if any. The Company's sole responsibility is to its Client and this document does not exonerate parties to a transaction from exercising all their rights and obligations under the transaction documents. This document cannot be reproduced except in full, without prior written approval of the Company. Any unauthorized alteration, forgery or falsification of the content or appearance of this document is unlawful and offenders may be prosecuted to the fullest extent of the law. Unless otherwise stated the results shown in this test report refer only to the sample(s) tested.

**Attention: To check the authenticity of testing report and certificate, please contact us at telephone: (86-755) 8307 1443, or email: CN.Doccheck@sgs.com**

| SN ID | Sample No. | SGS Sample ID           | Description   |
|-------|------------|-------------------------|---|
| SN93  | A93        | CAN25-0224576-0001.C093 | Brown paper sheet with black&red printing             |
| SN94  | A94        | CAN25-0224576-0001.C094 | White adhesive plastic sheet with black printing      |
| SN95  | A95        | CAN25-0224576-0001.C095 | White adhesive plastic sheet with black printing      |
| SN96  | A96        | CAN25-0224576-0001.C096 | Brown paper sheet                                     |
| SN97  | A97        | CAN25-0224576-0001.C097 | White paper sheet                                     |
| SN98  | A98        | CAN25-0224576-0001.C098 | Black surfaced paper sheet                            |
| SN99  | A99        | CAN25-0224576-0001.C099 | Brown paper sheet                                     |
| SN100 | A100       | CAN25-0224576-0001.C100 | Orange surfaced paper sheet                           |
| SN101 | A101       | CAN25-0224576-0001.C101 | Light purple surfaced paper sheet                     |
| SN102 | A102       | CAN25-0224576-0001.C102 | Blue surfaced paper sheet                             |
| SN103 | A103       | CAN25-0224576-0001.C103 | Yellow surfaced paper sheet                           |
| SN104 | A104       | CAN25-0224576-0001.C104 | Brown paper part                                      |
| SN105 | A105       | CAN25-0224576-0001.C105 | White adhesive plastic sheet with multicolor printing |
| SN106 | A106       | CAN25-0224576-0001.C106 | White adhesive plastic sheet with black printing      |
| SN107 | A107       | CAN25-0224576-0001.C107 | Grey surfaced adhesive paper sheet                    |
| SN108 | A108       | CAN25-0224576-0001.C108 | Multicolor surfaced paper sheet                       |
| SN109 | A109       | CAN25-0224576-0001.C109 | Black surfaced adhesive paper sheet                   |
| SN110 | A110       | CAN25-0224576-0001.C110 | Brown paper part                                      |
| SN111 | A111       | CAN25-0224576-0001.C111 | White paper sheet                                     |
| SN112 | A112       | CAN25-0224576-0001.C112 | Transparent adhesive plastic sheet                    |
| SN113 | A113       | CAN25-0224576-0001.C113 | White paper sheet with multicolor printing            |
| SN114 | A114       | CAN25-0224576-0001.C114 | White paper sheet with black printing                 |
| SN115 | A115       | CAN25-0224576-0001.C115 | White paper sheet with black printing                 |
| SN116 | A116       | CAN25-0224576-0001.C116 | Silvery metal part                                    |
| SN117 | A117       | CAN25-0224576-0001.C117 | Yellow surfaced adhesive paper sheet                  |
| SN118 | A118       | CAN25-0224576-0001.C118 | Orange surfaced adhesive paper sheet                  |
| SN119 | A119       | CAN25-0224576-0001.C119 | Red surfaced adhesive paper sheet                     |
| SN120 | A120       | CAN25-0224576-0001.C120 | Purple surfaced adhesive paper sheet                  |
| SN121 | A121       | CAN25-0224576-0001.C121 | Light blue surfaced adhesive paper sheet              |
| SN122 | A122       | CAN25-0224576-0001.C122 | Light brown surfaced adhesive paper sheet             |
| SN123 | A123       | CAN25-0224576-0001.C123 | Dark green surfaced paper sheet                       |
| SN124 | A124       | CAN25-0224576-0001.C124 | Black surfaced paper sheet                            |
| SN125 | A125       | CAN25-0224576-0001.C125 | Blue surfaced paper sheet                             |
| SN126 | A126       | CAN25-0224576-0001.C126 | White paper sheet                                     |
| SN127 | A127       | CAN25-0224576-0001.C127 | Blue adhesive fibre sheet                             |
| SN128 | A128       | CAN25-0224576-0001.C128 | Orange/blue adhesive rubber part                      |
| SN129 | A129       | CAN25-0224576-0001.C129 | Blue fibre tube                                       |
| SN130 | A130       | CAN25-0224576-0001.C130 | Blue translucent plastic part                         |
| SN131 | A131       | CAN25-0224576-0001.C131 | Blue rubber button                                    |
| SN132 | A132       | CAN25-0224576-0001.C132 | Blue rubber button                                    |
| SN133 | A133       | CAN25-0224576-0001.C133 | Blue rubber part                                      |



Unless otherwise agreed in writing, this document is issued by the Company subject to its General Conditions of Service printed overleaf, available on request or accessible at <https://www.sgs.com/en/Terms-and-Conditions>. Attention is drawn to the limitation of liability, indemnification and jurisdiction issues defined therein. Any holder of this document is advised that information contained hereon reflects the Company's findings at the time of its intervention only and within the limits of Client's instructions, if any. The Company's sole responsibility is to its Client and this document does not exonerate parties to a transaction from exercising all their rights and obligations under the transaction documents. This document cannot be reproduced except in full, without prior written approval of the Company. Any unauthorized alteration, forgery or falsification of the content or appearance of this document is unlawful and offenders may be prosecuted to the fullest extent of the law. Unless otherwise stated the results shown in this test report refer only to the sample(s) tested.

**Attention: To check the authenticity of testing/inspection report & certificate, please contact us at telephone: (86-755) 8307 1443, or email: CN.Doccheck@sgs.com**

| SN ID | Sample No. | SGS Sample ID           | Description                                     |
|-------|------------|-------------------------|---|
| SN134 | A134       | CAN25-0224576-0001.C134 | Blue plastic part                               |
| SN135 | A135       | CAN25-0224576-0001.C135 | Orange/white fibre tube                         |
| SN136 | A136       | CAN25-0224576-0001.C136 | Orange/white adhesive fibre sheet               |
| SN137 | A137       | CAN25-0224576-0001.C137 | Orange adhesive rubber part                     |
| SN138 | A138       | CAN25-0224576-0001.C138 | Orange translucent plastic part                 |
| SN139 | A139       | CAN25-0224576-0001.C139 | Orange rubber button                            |
| SN140 | A140       | CAN25-0224576-0001.C140 | Orange rubber button                            |
| SN141 | A141       | CAN25-0224576-0001.C141 | Orange rubber part with black printing          |
| SN142 | A142       | CAN25-0224576-0001.C142 | Orange plastic part                             |
| SN143 | A143       | CAN25-0224576-0001.C143 | Dark grey adhesive plastic cover                |
| SN144 | A144       | CAN25-0224576-0001.C144 | Pink fibre tube                                 |
| SN145 | A145       | CAN25-0224576-0001.C145 | Pink fibre sheet                                |
| SN146 | A146       | CAN25-0224576-0001.C146 | Orange/pink adhesive rubber part                |
| SN147 | A147       | CAN25-0224576-0001.C147 | Pink translucent plastic part                   |
| SN148 | A148       | CAN25-0224576-0001.C148 | Pink rubber button                              |
| SN149 | A149       | CAN25-0224576-0001.C149 | Pink rubber button                              |
| SN150 | A150       | CAN25-0224576-0001.C150 | Pink rubber part with black printing            |
| SN151 | A151       | CAN25-0224576-0001.C151 | Pink plastic part                               |
| SN152 | A152       | CAN25-0224576-0001.C152 | Purple fibre sheet                              |
| SN153 | A153       | CAN25-0224576-0001.C153 | Purple fibre tube                               |
| SN154 | A154       | CAN25-0224576-0001.C154 | Orange/purple adhesive rubber part              |
| SN155 | A155       | CAN25-0224576-0001.C155 | Purple translucent plastic part                 |
| SN156 | A156       | CAN25-0224576-0001.C156 | Purple rubber button                            |
| SN157 | A157       | CAN25-0224576-0001.C157 | Purple adhesive rubber button                   |
| SN158 | A158       | CAN25-0224576-0001.C158 | Purple rubber part with black printing          |
| SN159 | A159       | CAN25-0224576-0001.C159 | Purple plastic part                             |
| SN160 | A160       | CAN25-0224576-0001.C160 | Light blue fibre tube                           |
| SN161 | A161       | CAN25-0224576-0001.C161 | Light blue adhesive fibre sheet                 |
| SN162 | A162       | CAN25-0224576-0001.C162 | Orange/blue adhesive rubber part                |
| SN163 | A163       | CAN25-0224576-0001.C163 | Blue translucent plastic part                   |
| SN164 | A164       | CAN25-0224576-0001.C164 | Light blue rubber button                        |
| SN165 | A165       | CAN25-0224576-0001.C165 | Light blue adhesive rubber button               |
| SN166 | A166       | CAN25-0224576-0001.C166 | Light blue rubber part with black printing      |
| SN167 | A167       | CAN25-0224576-0001.C167 | Light blue plastic part                         |
| SN168 | A168       | CAN25-0224576-0001.C168 | White/grey fibre tube                           |
| SN169 | A169       | CAN25-0224576-0001.C169 | White adhesive fibre sheet                      |
| SN170 | A170       | CAN25-0224576-0001.C170 | Orange/white adhesive rubber part               |
| SN171 | A171       | CAN25-0224576-0001.C171 | Translucent plastic part                        |
| SN172 | A172       | CAN25-0224576-0001.C172 | White rubber button with grey printing          |
| SN173 | A173       | CAN25-0224576-0001.C173 | White adhesive rubber button with grey printing |
| SN174 | A174       | CAN25-0224576-0001.C174 | White rubber part with black printing           |
| SN175 | A175       | CAN25-0224576-0001.C175 | Grey plastic part                               |
| SN176 | A176       | CAN25-0224576-0001.C176 | Yellow/white fibre tube                         |
| SN177 | A177       | CAN25-0224576-0001.C177 | Yellow adhesive fibre sheet                     |
| SN178 | A178       | CAN25-0224576-0001.C178 | Orange/yellow adhesive rubber part              |
| SN179 | A179       | CAN25-0224576-0001.C179 | Yellow translucent plastic part                 |
| SN180 | A180       | CAN25-0224576-0001.C180 | Yellow rubber button                            |
| SN181 | A181       | CAN25-0224576-0001.C181 | Yellow adhesive rubber button                   |



Unless otherwise agreed in writing, this document is issued by the Company subject to its General Conditions of Service printed overleaf, available on request or accessible at <https://www.sgs.com/en/Terms-and-Conditions>. Attention is drawn to the limitation of liability, indemnification and jurisdiction issues defined therein. Any holder of this document is advised that information contained herein reflects the Company's findings at the time of its intervention only and within the limits of Client's instructions, if any. The Company's sole responsibility is to its Client and this document does not exonerate parties to a transaction from exercising all their rights and obligations under the transaction documents. This document cannot be reproduced except in full, without prior written approval of the Company. Any unauthorized alteration, forgery or falsification of the content or appearance of this document is unlawful and offenders may be prosecuted to the fullest extent of the law. Unless otherwise stated the results shown in this test report refer only to the sample(s) tested.

Attention: To check the authenticity of testing/inspection report & certificate, please contact us at telephone: (86-755) 8307 1443, or email: [CN.Doccheck@sgs.com](mailto:CN.Doccheck@sgs.com)

| SN ID | Sample No. | SGS Sample ID           | Description                              |
|-------|------------|-------------------------|--|
| SN182 | A182       | CAN25-0224576-0001.C182 | Yellow rubber button with black printing |
| SN183 | A183       | CAN25-0224576-0001.C183 | Yellow plastic part                      |
| SN184 | A184       | CAN25-0224576-0001.C184 | Red fibre tube                           |
| SN185 | A185       | CAN25-0224576-0001.C185 | Red adhesive fibre sheet                 |
| SN186 | A186       | CAN25-0224576-0001.C186 | Orange/red adhesive rubber part          |
| SN187 | A187       | CAN25-0224576-0001.C187 | Red translucent plastic part             |
| SN188 | A188       | CAN25-0224576-0001.C188 | Red rubber button                        |
| SN189 | A189       | CAN25-0224576-0001.C189 | Red adhesive rubber button               |
| SN190 | A190       | CAN25-0224576-0001.C190 | Red rubber part                          |
| SN191 | A191       | CAN25-0224576-0001.C191 | Red plastic part                         |
| SN192 | A192       | CAN25-0224576-0001.C192 | Multicolor fibre tube                    |
| SN193 | A193       | CAN25-0224576-0001.C193 | Multicolor adhesive fibre sheet          |
| SN194 | A194       | CAN25-0224576-0001.C194 | Orange/green adhesive rubber part        |
| SN195 | A195       | CAN25-0224576-0001.C195 | Green translucent plastic part           |
| SN196 | A196       | CAN25-0224576-0001.C196 | Green rubber button                      |
| SN197 | A197       | CAN25-0224576-0001.C197 | Green adhesive rubber button             |
| SN198 | A198       | CAN25-0224576-0001.C198 | Green rubber part with black printing    |
| SN199 | A199       | CAN25-0224576-0001.C199 | Green plastic part with orange printing  |
| SN200 | A200       | CAN25-0224576-0001.C200 | White paper sheet                        |
| SN201 | A201       | CAN25-0224576-0001.C201 | Black/grey fibre tube                    |
| SN202 | A202       | CAN25-0224576-0001.C202 | Red fibre tube                           |
| SN203 | A203       | CAN25-0224576-0001.C203 | Blue fibre tube                          |
| SN204 | A204       | CAN25-0224576-0001.C204 | White/grey fibre tube                    |
| SN205 | A205       | CAN25-0224576-0001.C205 | Red fibre tube                           |
| SN206 | A206       | CAN25-0224576-0001.C206 | Blue fibre tube                          |
| SN207 | A207       | CAN25-0224576-0001.C207 | Light blue fibre tube                    |
| SN208 | A208       | CAN25-0224576-0001.C208 | Yellow fibre tube                        |
| SN209 | A209       | CAN25-0224576-0001.C209 | Purple fibre tube                        |
| SN210 | A210       | CAN25-0224576-0001.C210 | Multicolor fibre tube                    |
| SN211 | A211       | CAN25-0224576-0001.C211 | Orange/white fibre tube                  |
| SN212 | A212       | CAN25-0224576-0001.C212 | Black/grey fibre tube                    |
| SN213 | A213       | CAN25-0224576-0001.C213 | Pink fibre tube                          |
| SN214 | A214       | CAN25-0224576-0001.C214 | Black rubber button with grey printing   |
| SN215 | A215       | CAN25-0224576-0001.C215 | Black rubber part                        |
| SN216 | A216       | CAN25-0224576-0001.C216 | Red rubber button                        |
| SN217 | A217       | CAN25-0224576-0001.C217 | Red rubber part                          |
| SN218 | A218       | CAN25-0224576-0001.C218 | Light blue rubber button                 |
| SN219 | A219       | CAN25-0224576-0001.C219 | Light blue rubber part                   |
| SN220 | A220       | CAN25-0224576-0001.C220 | White rubber button with grey printing   |
| SN221 | A221       | CAN25-0224576-0001.C221 | White rubber part                        |
| SN222 | A222       | CAN25-0224576-0001.C222 | Purple rubber button                     |
| SN223 | A223       | CAN25-0224576-0001.C223 | Purple rubber part                       |
| SN224 | A224       | CAN25-0224576-0001.C224 | Yellow rubber button                     |
| SN225 | A225       | CAN25-0224576-0001.C225 | Yellow rubber part                       |
| SN226 | A226       | CAN25-0224576-0001.C226 | Green rubber button                      |
| SN227 | A227       | CAN25-0224576-0001.C227 | Green rubber part                        |
| SN228 | A228       | CAN25-0224576-0001.C228 | Orange rubber button                     |
| SN229 | A229       | CAN25-0224576-0001.C229 | Orange rubber part                       |
| SN230 | A230       | CAN25-0224576-0001.C230 | Pink rubber button                       |



Unless otherwise agreed in writing, this document is issued by the Company subject to its General Conditions of Service printed overleaf, available on request or accessible at <https://www.sgs.com/en/Terms-and-Conditions>. Attention is drawn to the limitation of liability, indemnification and jurisdiction issues defined therein. Any holder of this document is advised that information contained hereon reflects the Company's findings at the time of its intervention only and within the limits of Client's instructions, if any. The Company's sole responsibility is to its Client and this document does not exonerate parties to a transaction from exercising all their rights and obligations under the transaction documents. This document cannot be reproduced except in full, without prior written approval of the Company. Any unauthorized alteration, forgery or falsification of the content or appearance of this document is unlawful and offenders may be prosecuted to the fullest extent of the law. Unless otherwise stated the results shown in this test report refer only to the sample(s) tested.

Attention: To check the authenticity of testing/inspection report & certificate, please contact us at telephone: (86-755) 8307 1443, or email: [CN.Doccheck@sgs.com](mailto:CN.Doccheck@sgs.com)

| SN ID | Sample No. | SGS Sample ID           | Description                            |
|-------|------------|-------------------------|--|
| SN231 | A231       | CAN25-0224576-0001.C231 | Pink rubber part                       |
| SN232 | A232       | CAN25-0224576-0001.C232 | Blue rubber button                     |
| SN233 | A233       | CAN25-0224576-0001.C233 | Blue rubber part                       |
| SN234 | A234       | CAN25-0224576-0001.C234 | Black rubber button                    |
| SN235 | A235       | CAN25-0224576-0001.C235 | Black rubber part                      |
| SN236 | A236       | CAN25-0224576-0001.C236 | Red rubber button                      |
| SN237 | A237       | CAN25-0224576-0001.C237 | Red rubber part                        |
| SN238 | A238       | CAN25-0224576-0001.C238 | Light blue rubber button               |
| SN239 | A239       | CAN25-0224576-0001.C239 | Light blue rubber part                 |
| SN240 | A240       | CAN25-0224576-0001.C240 | White rubber button with grey printing |
| SN241 | A241       | CAN25-0224576-0001.C241 | White rubber part                      |
| SN242 | A242       | CAN25-0224576-0001.C242 | Purple rubber button                   |
| SN243 | A243       | CAN25-0224576-0001.C243 | Purple rubber part                     |
| SN244 | A244       | CAN25-0224576-0001.C244 | Yellow rubber button                   |
| SN245 | A245       | CAN25-0224576-0001.C245 | Yellow rubber part                     |
| SN246 | A246       | CAN25-0224576-0001.C246 | Green rubber pbutton                   |
| SN247 | A247       | CAN25-0224576-0001.C247 | Green rubber part                      |
| SN248 | A248       | CAN25-0224576-0001.C248 | Orange rubber button                   |
| SN249 | A249       | CAN25-0224576-0001.C249 | Orange rubber part                     |
| SN250 | A250       | CAN25-0224576-0001.C250 | Pink rubber button                     |
| SN251 | A251       | CAN25-0224576-0001.C251 | Pink rubber part                       |
| SN252 | A252       | CAN25-0224576-0001.C252 | Blue rubber part                       |
| SN253 | A253       | CAN25-0224576-0001.C253 | Blue rubber part                       |
| SN254 | A254       | CAN25-0224576-0001.C254 | Green "PCB"                            |
| SN255 | A255       | CAN25-0224576-0001.C255 | Black adhesive foam sheet              |
| SN256 | A256       | CAN25-0224576-0001.C256 | Black rubber part                      |
| SN257 | A257       | CAN25-0224576-0001.C257 | Silvery metal sheet                    |
| SN258 | A258       | CAN25-0224576-0001.C258 | Black rubber part                      |
| SN259 | A259       | CAN25-0224576-0001.C259 | Silvery metal sheet                    |
| SN260 | A260       | CAN25-0224576-0001.C260 | Beige plastic part                     |
| SN261 | A261       | CAN25-0224576-0001.C261 | Beige plastic part                     |
| SN262 | A262       | CAN25-0224576-0001.C262 | Silvery metal part                     |
| SN263 | A263       | CAN25-0224576-0001.C263 | Silvery metal pin                      |
| SN264 | A264       | CAN25-0224576-0001.C264 | Beige plastic part                     |
| SN265 | A265       | CAN25-0224576-0001.C265 | Silvery metal pin                      |
| SN266 | A266       | CAN25-0224576-0001.C266 | Beige plastic part                     |
| SN267 | A267       | CAN25-0224576-0001.C267 | Silvery metal pin                      |
| SN268 | A268       | CAN25-0224576-0001.C268 | Grey plastic button                    |
| SN269 | A269       | CAN25-0224576-0001.C269 | Silvery metal sheet                    |
| SN270 | A270       | CAN25-0224576-0001.C270 | Silvery metal sheet                    |
| SN271 | A271       | CAN25-0224576-0001.C271 | Silvery metal pin                      |
| SN272 | A272       | CAN25-0224576-0001.C272 | Black plastic shell                    |
| SN273 | A273       | CAN25-0224576-0001.C273 | Black plastic button                   |
| SN274 | A274       | CAN25-0224576-0001.C274 | Silvery metal sheet                    |
| SN275 | A275       | CAN25-0224576-0001.C275 | Silvery metal sheet                    |
| SN276 | A276       | CAN25-0224576-0001.C276 | Black plastic shell                    |
| SN277 | A277       | CAN25-0224576-0001.C277 | Silvery metal pin                      |
| SN278 | A278       | CAN25-0224576-0001.C278 | Grey body with black printing          |
| SN279 | A279       | CAN25-0224576-0001.C279 | Black body                             |



Unless otherwise agreed in writing, this document is issued by the Company subject to its General Conditions of Service printed overleaf, available on request or accessible at <https://www.sgs.com/en/Terms-and-Conditions>. Attention is drawn to the limitation of liability, indemnification and jurisdiction issues defined therein. Any holder of this document is advised that information contained herein reflects the Company's findings at the time of its intervention only and within the limits of Client's instructions, if any. The Company's sole responsibility is to its Client and this document does not exonerate parties to a transaction from exercising all their rights and obligations under the transaction documents. This document cannot be reproduced except in full, without prior written approval of the Company. Any unauthorized alteration, forgery or falsification of the content or appearance of this document is unlawful and offenders may be prosecuted to the fullest extent of the law. Unless otherwise stated the results shown in this test report refer only to the sample(s) tested.

**Attention: To check the authenticity of testing/inspection report & certificate, please contact us at telephone: (86-755) 8307 1443, or email: CN.Doccheck@sgs.com**

| SN ID | Sample No. | SGS Sample ID           | Description                              |
|-------|------------|-------------------------|--|
| SN280 | A280       | CAN25-0224576-0001.C280 | Dark grey body with black printing       |
| SN281 | A281       | CAN25-0224576-0001.C281 | Grey body with black printing            |
| SN282 | A282       | CAN25-0224576-0001.C282 | Silvery metal solder                     |
| SN283 | A283       | CAN25-0224576-0001.C283 | Black plastic part                       |
| SN284 | A284       | CAN25-0224576-0001.C284 | Black body                               |
| SN285 | A285       | CAN25-0224576-0001.C285 | Black plastic shell                      |
| SN286 | A286       | CAN25-0224576-0001.C286 | Black plastic shell                      |
| SN287 | A287       | CAN25-0224576-0001.C287 | Black plastic (cable jacket)             |
| SN288 | A288       | CAN25-0224576-0001.C288 | Silvery metal shell                      |
| SN289 | A289       | CAN25-0224576-0001.C289 | Transparent plastic part                 |
| SN290 | A290       | CAN25-0224576-0001.C290 | Orange plastic part                      |
| SN291 | A291       | CAN25-0224576-0001.C291 | Golden metal pin                         |
| SN292 | A292       | CAN25-0224576-0001.C292 | Silvery metal solder                     |
| SN293 | A293       | CAN25-0224576-0001.C293 | Silvery metal shell                      |
| SN294 | A294       | CAN25-0224576-0001.C294 | Silvery metal pin                        |
| SN295 | A295       | CAN25-0224576-0001.C295 | Brown translucent adhesive plastic sheet |
| SN296 | A296       | CAN25-0224576-0001.C296 | Silvery/golden metal pin                 |
| SN297 | A297       | CAN25-0224576-0001.C297 | Black plastic part                       |
| SN298 | A298       | CAN25-0224576-0001.C298 | Brown plastic part                       |
| SN299 | A299       | CAN25-0224576-0001.C299 | Green "PCB"                              |
| SN300 | A300       | CAN25-0224576-0001.C300 | Silvery metal solder                     |
| SN301 | A301       | CAN25-0224576-0001.C301 | Black plastic (wire insulation)          |
| SN302 | A302       | CAN25-0224576-0001.C302 | White plastic (wire insulation)          |
| SN303 | A303       | CAN25-0224576-0001.C303 | Green plastic (wire insulation)          |
| SN304 | A304       | CAN25-0224576-0001.C304 | Red plastic (wire insulation)            |
| SN305 | A305       | CAN25-0224576-0001.C305 | Silvery material sheet                   |
| SN306 | A306       | CAN25-0224576-0001.C306 | Silvery metal wire                       |
| SN307 | A307       | CAN25-0224576-0001.C307 | Black plastic tube                       |
| SN308 | A308       | CAN25-0224576-0001.C308 | Silvery metal wire                       |
| SN309 | A316       | CAN25-0224576-0001.C316 | Black/grey fibre tube                    |
| SN310 | A317       | CAN25-0224576-0001.C317 | Blue fibre tube                          |
| SN311 | A318       | CAN25-0224576-0001.C318 | Orange/white fibre tube                  |
| SN312 | A319       | CAN25-0224576-0001.C319 | Pink fibre tube                          |
| SN313 | A320       | CAN25-0224576-0001.C320 | Purple fibre tube                        |
| SN314 | A321       | CAN25-0224576-0001.C321 | Light blue fibre tube                    |
| SN315 | A322       | CAN25-0224576-0001.C322 | White/grey fibre tube                    |
| SN316 | A323       | CAN25-0224576-0001.C323 | Yellow fibre tube                        |
| SN317 | A324       | CAN25-0224576-0001.C324 | Red fibre tube                           |
| SN318 | A325       | CAN25-0224576-0001.C325 | Multicolor fibre tube                    |
| SN319 | A326       | CAN25-0224576-0001.C326 | Black fibre sheet                        |
| SN320 | A327       | CAN25-0224576-0001.C327 | Blue fibre sheet                         |
| SN321 | A328       | CAN25-0224576-0001.C328 | Orange/white fibre sheet                 |
| SN322 | A329       | CAN25-0224576-0001.C329 | Pink fibre sheet                         |
| SN323 | A330       | CAN25-0224576-0001.C330 | Purple fibre sheet                       |
| SN324 | A331       | CAN25-0224576-0001.C331 | Light blue fibre sheet                   |
| SN325 | A332       | CAN25-0224576-0001.C332 | White fibre sheet                        |
| SN326 | A333       | CAN25-0224576-0001.C333 | Yellow fibre sheet                       |
| SN327 | A334       | CAN25-0224576-0001.C334 | Red fibre sheet                          |
| SN328 | A335       | CAN25-0224576-0001.C335 | Multicolor fibre sheet                   |



Unless otherwise agreed in writing, this document is issued by the Company subject to its General Conditions of Service printed overleaf, available on request or accessible at <https://www.sgs.com/en/Terms-and-Conditions>. Attention is drawn to the limitation of liability, indemnification and jurisdiction issues defined therein. Any holder of this document is advised that information contained herein reflects the Company's findings at the time of its intervention only and within the limits of Client's instructions, if any. The Company's sole responsibility is to its Client and this document does not exonerate parties to a transaction from exercising all their rights and obligations under the transaction documents. This document cannot be reproduced except in full, without prior written approval of the Company. Any unauthorized alteration, forgery or falsification of the content or appearance of this document is unlawful and offenders may be prosecuted to the fullest extent of the law. Unless otherwise stated the results shown in this test report refer only to the sample(s) tested.

Attention: To check the authenticity of testing/inspection report & certificate, please contact us at telephone: (86-755) 8307 1443, or email: [CN.Doccheck@sgs.com](mailto:CN.Doccheck@sgs.com)

**Verification Result(s):**

Unless otherwise specified, the unit is mg/kg.

| Test Item(s) | A1   | A2   | A3   | A4   | A5   | A6   | A7   | A8   |
|--------------|------|------|------|------|------|------|------|------|
| Pb           | BL   | BL   | BL   | BL   | BL   | BL   | BL   | BL   |
| Hg           | BL   | BL   | BL   | BL   | BL   | BL   | BL   | BL   |
| Cd           | BL   | BL   | BL   | BL   | BL   | BL   | BL   | BL   |
| Cr(VI)▼      | BL   | BL   | BL   | BL   | BL   | BL   | BL   | BL   |
| PBB          | BL   | BL   | BL   | BL   | BL   | BL   | BL   | BL   |
| PBDE         | BL   | BL   | BL   | BL   | BL   | BL   | BL   | BL   |
| DEHP         | BL   | BL   | BL   | BL   | BL   | BL   | BL   | BL   |
| BBP          | BL   | BL   | BL   | BL   | BL   | BL   | BL   | BL   |
| DBP          | BL   | BL   | BL   | BL   | BL   | BL   | BL   | BL   |
| DIBP         | BL   | BL   | BL   | BL   | BL   | BL   | BL   | BL   |
| Conclusion   | PASS | PASS | PASS | PASS | PASS | PASS | PASS | PASS |

| Test Item(s) | A9   | A10  | A11  | A12  | A13  | A14  | A15  | A16  |
|--------------|------|------|------|------|------|------|------|------|
| Pb           | BL   | BL   | BL   | BL   | BL   | BL   | BL   | BL   |
| Hg           | BL   | BL   | BL   | BL   | BL   | BL   | BL   | BL   |
| Cd           | BL   | BL   | BL   | BL   | BL   | BL   | BL   | BL   |
| Cr(VI)▼      | BL   | BL   | BL   | ND   | ND   | BL   | BL   | BL   |
| PBB          | BL   | BL   | BL   | ---  | ---  | BL   | BL   | BL   |
| PBDE         | BL   | BL   | BL   | ---  | ---  | BL   | BL   | BL   |
| DEHP         | BL   | BL   | BL   | ---  | ---  | BL   | BL   | BL   |
| BBP          | BL   | BL   | BL   | ---  | ---  | BL   | BL   | BL   |
| DBP          | BL   | BL   | BL   | ---  | ---  | BL   | BL   | BL   |
| DIBP         | BL   | BL   | BL   | ---  | ---  | BL   | BL   | BL   |
| Conclusion   | PASS | PASS | PASS | PASS | PASS | PASS | PASS | PASS |

| Test Item(s) | A17  | A18  | A19  | A20  | A21  | A22  | A23  | A24  |
|--------------|------|------|------|------|------|------|------|------|
| Pb           | BL   | BL   | BL   | BL   | BL   | BL   | BL   | BL   |
| Hg           | BL   | BL   | BL   | BL   | BL   | BL   | BL   | BL   |
| Cd           | BL   | BL   | BL   | BL   | BL   | BL   | BL   | BL   |
| Cr(VI)▼      | BL   | BL   | BL   | BL   | BL   | BL   | BL   | BL   |
| PBB          | BL   | BL   | BL   | BL   | BL   | BL   | BL   | BL   |
| PBDE         | BL   | BL   | BL   | BL   | BL   | BL   | BL   | BL   |
| DEHP         | BL   | BL   | BL   | BL   | BL   | BL   | BL   | BL   |
| BBP          | BL   | BL   | BL   | BL   | BL   | BL   | BL   | BL   |
| DBP          | BL   | BL   | BL   | BL   | BL   | BL   | BL   | BL   |
| DIBP         | BL   | BL   | BL   | BL   | BL   | BL   | BL   | BL   |
| Conclusion   | PASS | PASS | PASS | PASS | PASS | PASS | PASS | PASS |

| Test Item(s) | A25 | A26 | A27 | A28 | A29 | A30 | A31 | A32 |
|--------------|-----|-----|-----|-----|-----|-----|-----|-----|
| Pb           | BL  | BL  | BL  | BL  | BL  | BL  | BL  | BL  |
| Hg           | BL  | BL  | BL  | BL  | BL  | BL  | BL  | BL  |
| Cd           | BL  | BL  | BL  | BL  | BL  | BL  | BL  | BL  |
| Cr(VI)▼      | BL  | BL  | BL  | BL  | BL  | BL  | BL  | BL  |
| PBB          | BL  | BL  | BL  | --- | BL  | --- | --- | BL  |



Unless otherwise agreed in writing, this document is issued by the Company subject to its General Conditions of Service printed overleaf, available on request or accessible at <https://www.sgs.com/en/Terms-and-Conditions>. Attention is drawn to the limitation of liability, indemnification and jurisdiction issues defined therein. Any holder of this document is advised that information contained herein reflects the Company's findings at the time of its intervention only and within the limits of Client's instructions, if any. The Company's sole responsibility is to its Client and this document does not exonerate parties to a transaction from exercising all their rights and obligations under the transaction documents. This document cannot be reproduced except in full, without prior written approval of the Company. Any unauthorized alteration, forgery or falsification of the content or appearance of this document is unlawful and offenders may be prosecuted to the fullest extent of the law. Unless otherwise stated the results shown in this test report refer only to the sample(s) tested.

**Attention: To check the authenticity of testing /inspection report & certificate, please contact us at telephone: (86-755) 8307 1443, or email: CN.Doccheck@sgs.com**

| Test Item(s) | A25  | A26  | A27  | A28  | A29  | A30  | A31  | A32  |
|--------------|------|------|------|------|------|------|------|------|
| PBDE         | BL   | BL   | BL   | ---  | BL   | ---  | ---  | BL   |
| DEHP         | BL   | BL   | BL   | ---  | BL   | ---  | ---  | BL   |
| BBP          | BL   | BL   | BL   | ---  | BL   | ---  | ---  | BL   |
| DBP          | BL   | BL   | BL   | ---  | BL   | ---  | ---  | BL   |
| DIBP         | BL   | BL   | BL   | ---  | BL   | ---  | ---  | BL   |
| Conclusion   | PASS | PASS | PASS | PASS | PASS | PASS | PASS | PASS |

| Test Item(s) | A33  | A34  | A35  | A36  | A37  | A38  | A39  | A40  |
|--------------|------|------|------|------|------|------|------|------|
| Pb           | BL   | BL   | BL   | BL   | BL   | BL   | BL   | BL   |
| Hg           | BL   | BL   | BL   | BL   | BL   | BL   | BL   | BL   |
| Cd           | BL   | BL   | BL   | BL   | BL   | BL   | BL   | BL   |
| Cr(VI)▼      | BL   | BL   | BL   | BL   | BL   | BL   | ND   | BL   |
| PBB          | BL   | ---  | BL   | BL   | ---  | ---  | ---  | BL   |
| PBDE         | BL   | ---  | BL   | BL   | ---  | ---  | ---  | BL   |
| DEHP         | BL   | ---  | BL   | BL   | ---  | ---  | ---  | BL   |
| BBP          | BL   | ---  | BL   | BL   | ---  | ---  | ---  | BL   |
| DBP          | BL   | ---  | BL   | BL   | ---  | ---  | ---  | BL   |
| DIBP         | BL   | ---  | BL   | BL   | ---  | ---  | ---  | BL   |
| Conclusion   | PASS | PASS | PASS | PASS | PASS | PASS | PASS | PASS |

| Test Item(s) | A41  | A42  | A43  | A44  | A45  | A46  | A47  | A48  |
|--------------|------|------|------|------|------|------|------|------|
| Pb           | BL   | BL   | BL   | BL   | BL   | BL   | BL   | BL   |
| Hg           | BL   | BL   | BL   | BL   | BL   | BL   | BL   | BL   |
| Cd           | BL   | BL   | BL   | BL   | BL   | BL   | BL   | BL   |
| Cr(VI)▼      | BL   | BL   | BL   | BL   | BL   | BL   | BL   | ND   |
| PBB          | BL   | BL   | BL   | ---  | BL   | BL   | BL   | ---  |
| PBDE         | BL   | BL   | BL   | ---  | BL   | BL   | BL   | ---  |
| DEHP         | BL   | BL   | BL   | ---  | BL   | BL   | BL   | ---  |
| BBP          | BL   | BL   | BL   | ---  | BL   | BL   | BL   | ---  |
| DBP          | BL   | BL   | BL   | ---  | BL   | BL   | BL   | ---  |
| DIBP         | BL   | BL   | BL   | ---  | BL   | BL   | BL   | ---  |
| Conclusion   | PASS | PASS | PASS | PASS | PASS | PASS | PASS | PASS |

| Test Item(s) | A49  | A50  | A51  | A52  | A53  | A54  | A55  | A56  |
|--------------|------|------|------|------|------|------|------|------|
| Pb           | BL   | BL   | BL   | BL   | BL   | BL   | BL   | BL   |
| Hg           | BL   | BL   | BL   | BL   | BL   | BL   | BL   | BL   |
| Cd           | BL   | BL   | BL   | BL   | BL   | BL   | BL   | BL   |
| Cr(VI)▼      | BL   | BL   | BL   | BL   | BL   | BL   | ND   | BL   |
| PBB          | BL   | ND   | BL   | ---  | ---  | BL   | ---  | ---  |
| PBDE         | BL   | ND   | BL   | ---  | ---  | BL   | ---  | ---  |
| DEHP         | BL   | ND   | BL   | ---  | ---  | BL   | ---  | ---  |
| BBP          | BL   | ND   | BL   | ---  | ---  | BL   | ---  | ---  |
| DBP          | BL   | ND   | BL   | ---  | ---  | BL   | ---  | ---  |
| DIBP         | BL   | ND   | BL   | ---  | ---  | BL   | ---  | ---  |
| Conclusion   | PASS | PASS | PASS | PASS | PASS | PASS | PASS | PASS |



Unless otherwise agreed in writing, this document is issued by the Company subject to its General Conditions of Service printed overleaf, available on request or accessible at <https://www.sgs.com/en/Terms-and-Conditions>. Attention is drawn to the limitation of liability, indemnification and jurisdiction issues defined therein. Any holder of this document is advised that information contained hereon reflects the Company's findings at the time of its intervention only and within the limits of Client's instructions, if any. The Company's sole responsibility is to its Client and this document does not exonerate parties to a transaction from exercising all their rights and obligations under the transaction documents. This document cannot be reproduced except in full, without prior written approval of the Company. Any unauthorized alteration, forgery or falsification of the content or appearance of this document is unlawful and offenders may be prosecuted to the fullest extent of the law. Unless otherwise stated the results shown in this test report refer only to the sample(s) tested.

Attention: To check the authenticity of testing /inspection report & certificate, please contact us at telephone: (86-755) 8307 1443, or email: [CN.Doccheck@sgs.com](mailto:CN.Doccheck@sgs.com)

| Test Item(s) | A57  | A58  | A59  | A60  | A61  | A62  | A63  | A64  |
|--------------|------|------|------|------|------|------|------|------|
| Pb           | BL   | BL   | BL   | BL   | BL   | BL   | BL   | BL   |
| Hg           | BL   | BL   | BL   | BL   | BL   | BL   | BL   | BL   |
| Cd           | BL   | BL   | BL   | BL   | BL   | BL   | BL   | BL   |
| Cr(VI)▼      | BL   | BL   | BL   | BL   | BL   | ND   | BL   | BL   |
| PBB          | BL   | ---  | BL   | ---  | BL   | ---  | ---  | BL   |
| PBDE         | BL   | ---  | BL   | ---  | BL   | ---  | ---  | BL   |
| DEHP         | BL   | ---  | BL   | ---  | BL   | ---  | ---  | BL   |
| BBP          | BL   | ---  | BL   | ---  | BL   | ---  | ---  | BL   |
| DBP          | BL   | ---  | BL   | ---  | BL   | ---  | ---  | BL   |
| DIBP         | BL   | ---  | BL   | ---  | BL   | ---  | ---  | BL   |
| Conclusion   | PASS | PASS | PASS | PASS | PASS | PASS | PASS | PASS |

| Test Item(s) | A65  | A66  | A67  | A68  | A69  | A70  | A71  | A72  |
|--------------|------|------|------|------|------|------|------|------|
| Pb           | BL   | BL   | BL   | BL   | BL   | BL   | BL   | BL   |
| Hg           | BL   | BL   | BL   | BL   | BL   | BL   | BL   | BL   |
| Cd           | BL   | BL   | BL   | BL   | BL   | BL   | BL   | BL   |
| Cr(VI)▼      | ND   | BL   | BL   | BL   | BL   | BL   | BL   | BL   |
| PBB          | ---  | BL   | BL   | BL   | BL   | BL   | ND   | ---  |
| PBDE         | ---  | BL   | BL   | BL   | BL   | BL   | ND   | ---  |
| DEHP         | ---  | BL   | BL   | BL   | BL   | BL   | ND   | ---  |
| BBP          | ---  | BL   | BL   | BL   | BL   | BL   | ND   | ---  |
| DBP          | ---  | BL   | BL   | BL   | BL   | BL   | ND   | ---  |
| DIBP         | ---  | BL   | BL   | BL   | BL   | BL   | ND   | ---  |
| Conclusion   | PASS | PASS | PASS | PASS | PASS | PASS | PASS | PASS |

| Test Item(s) | A73   | A74  | A75  | A76  | A77  | A78  | A79  | A80  |
|--------------|-------|------|------|------|------|------|------|------|
| Pb           | BL    | BL   | BL   | BL   | BL   | BL   | BL   | BL   |
| Hg           | BL    | BL   | BL   | BL   | BL   | BL   | BL   | BL   |
| Cd           | BL    | BL   | BL   | BL   | BL   | BL   | BL   | BL   |
| Cr(VI)▼      | <100* | BL   | BL   | BL   | BL   | BL   | BL   | BL   |
| PBB          | BL    | BL   | BL   | BL   | BL   | BL   | BL   | BL   |
| PBDE         | BL    | BL   | BL   | BL   | BL   | BL   | BL   | BL   |
| DEHP         | BL    | BL   | BL   | BL   | BL   | BL   | BL   | BL   |
| BBP          | BL    | BL   | BL   | BL   | BL   | BL   | BL   | BL   |
| DBP          | BL    | BL   | BL   | BL   | BL   | BL   | BL   | BL   |
| DIBP         | BL    | BL   | BL   | BL   | BL   | BL   | BL   | BL   |
| Conclusion   | PASS  | PASS | PASS | PASS | PASS | PASS | PASS | PASS |

| Test Item(s) | A81 | A82 | A83 | A84 | A85 | A86 | A87 | A88 |
|--------------|-----|-----|-----|-----|-----|-----|-----|-----|
| Pb           | BL  | BL  | BL  | BL  | BL  | BL  | BL  | BL  |
| Hg           | BL  | BL  | BL  | BL  | BL  | BL  | BL  | BL  |
| Cd           | BL  | BL  | BL  | BL  | BL  | BL  | BL  | BL  |
| Cr(VI)▼      | BL  | BL  | BL  | BL  | BL  | BL  | BL  | BL  |
| PBB          | ND  | BL  | ND  | --- | BL  | BL  | BL  | BL  |



Unless otherwise agreed in writing, this document is issued by the Company subject to its General Conditions of Service printed overleaf, available on request or accessible at <https://www.sgs.com/en/Terms-and-Conditions>. Attention is drawn to the limitation of liability, indemnification and jurisdiction issues defined therein. Any holder of this document is advised that information contained herein reflects the Company's findings at the time of its intervention only and within the limits of Client's instructions, if any. The Company's sole responsibility is to its Client and this document does not exonerate parties to a transaction from exercising all their rights and obligations under the transaction documents. This document cannot be reproduced except in full, without prior written approval of the Company. Any unauthorized alteration, forgery or falsification of the content or appearance of this document is unlawful and offenders may be prosecuted to the fullest extent of the law. Unless otherwise stated the results shown in this test report refer only to the sample(s) tested.

Attention: To check the authenticity of testing /inspection report & certificate, please contact us at telephone: (86-755) 8307 1443, or email: [CN.Doccheck@sgs.com](mailto:CN.Doccheck@sgs.com)

| Test Item(s) | A81  | A82  | A83  | A84  | A85  | A86  | A87  | A88  |
|--------------|------|------|------|------|------|------|------|------|
| PBDE         | ND   | BL   | ND   | ---  | BL   | BL   | BL   | BL   |
| DEHP         | ND   | BL   | ND   | ---  | BL   | BL   | BL   | BL   |
| BBP          | ND   | BL   | ND   | ---  | BL   | BL   | BL   | BL   |
| DBP          | ND   | BL   | ND   | ---  | BL   | BL   | BL   | BL   |
| DIBP         | ND   | BL   | ND   | ---  | BL   | BL   | BL   | BL   |
| Conclusion   | PASS | PASS | PASS | PASS | PASS | PASS | PASS | PASS |

| Test Item(s) | A89  | A90  | A91  | A92  | A93  | A94  | A95  | A96  |
|--------------|------|------|------|------|------|------|------|------|
| Pb           | BL   | BL   | BL   | BL   | BL   | BL   | BL   | BL   |
| Hg           | BL   | BL   | BL   | BL   | BL   | BL   | BL   | BL   |
| Cd           | BL   | BL   | BL   | BL   | BL   | BL   | BL   | BL   |
| Cr(VI)▼      | BL   | ND   | BL   | BL   | BL   | BL   | BL   | BL   |
| PBB          | BL   | ---  | BL   | BL   | BL   | BL   | BL   | BL   |
| PBDE         | BL   | ---  | BL   | BL   | BL   | BL   | BL   | BL   |
| DEHP         | BL   | ---  | BL   | BL   | BL   | BL   | BL   | BL   |
| BBP          | BL   | ---  | BL   | BL   | BL   | BL   | BL   | BL   |
| DBP          | BL   | ---  | BL   | BL   | BL   | BL   | BL   | BL   |
| DIBP         | BL   | ---  | BL   | BL   | BL   | BL   | BL   | BL   |
| Conclusion   | PASS | PASS | PASS | PASS | PASS | PASS | PASS | PASS |

| Test Item(s) | A97  | A98  | A99  | A100 | A101 | A102 | A103 | A104 |
|--------------|------|------|------|------|------|------|------|------|
| Pb           | BL   | BL   | BL   | BL   | BL   | BL   | BL   | BL   |
| Hg           | BL   | BL   | BL   | BL   | BL   | BL   | BL   | BL   |
| Cd           | BL   | BL   | BL   | BL   | BL   | BL   | BL   | BL   |
| Cr(VI)▼      | BL   | BL   | BL   | BL   | BL   | BL   | BL   | BL   |
| PBB          | BL   | BL   | BL   | BL   | BL   | BL   | BL   | BL   |
| PBDE         | BL   | BL   | BL   | BL   | BL   | BL   | BL   | BL   |
| DEHP         | BL   | BL   | BL   | BL   | BL   | BL   | BL   | BL   |
| BBP          | BL   | BL   | BL   | BL   | BL   | BL   | BL   | BL   |
| DBP          | BL   | BL   | BL   | BL   | BL   | BL   | BL   | BL   |
| DIBP         | BL   | BL   | BL   | BL   | BL   | BL   | BL   | BL   |
| Conclusion   | PASS | PASS | PASS | PASS | PASS | PASS | PASS | PASS |

| Test Item(s) | A105 | A106 | A107 | A108 | A109 | A110 | A111 | A112 |
|--------------|------|------|------|------|------|------|------|------|
| Pb           | BL   | BL   | BL   | BL   | BL   | BL   | BL   | BL   |
| Hg           | BL   | BL   | BL   | BL   | BL   | BL   | BL   | BL   |
| Cd           | BL   | BL   | BL   | BL   | BL   | BL   | BL   | BL   |
| Cr(VI)▼      | BL   | BL   | BL   | BL   | BL   | BL   | BL   | BL   |
| PBB          | BL   | BL   | BL   | BL   | BL   | BL   | BL   | BL   |
| PBDE         | BL   | BL   | BL   | BL   | BL   | BL   | BL   | BL   |
| DEHP         | BL   | BL   | BL   | BL   | BL   | BL   | BL   | BL   |
| BBP          | BL   | BL   | BL   | BL   | BL   | BL   | BL   | BL   |
| DBP          | BL   | BL   | BL   | BL   | BL   | BL   | BL   | BL   |
| DIBP         | BL   | BL   | BL   | BL   | BL   | BL   | BL   | BL   |
| Conclusion   | PASS | PASS | PASS | PASS | PASS | PASS | PASS | PASS |



Unless otherwise agreed in writing, this document is issued by the Company subject to its General Conditions of Service printed overleaf, available on request or accessible at <https://www.sgs.com/en/Terms-and-Conditions>. Attention is drawn to the limitation of liability, indemnification and jurisdiction issues defined therein. Any holder of this document is advised that information contained hereon reflects the Company's findings at the time of its intervention only and within the limits of Client's instructions, if any. The Company's sole responsibility is to its Client and this document does not exonerate parties to a transaction from exercising all their rights and obligations under the transaction documents. This document cannot be reproduced except in full, without prior written approval of the Company. Any unauthorized alteration, forgery or falsification of the content or appearance of this document is unlawful and offenders may be prosecuted to the fullest extent of the law. Unless otherwise stated the results shown in this test report refer only to the sample(s) tested.  
**Attention: To check the authenticity of testing /inspection report & certificate, please contact us at telephone: (86-755) 8307 1443, or email: CN.Doccheck@sgs.com**

| Test Item(s) | A113 | A114 | A115 | A116 | A117 | A118 | A119 | A120 |
|--------------|------|------|------|------|------|------|------|------|
| Pb           | BL   | BL   | BL   | BL   | BL   | BL   | BL   | BL   |
| Hg           | BL   | BL   | BL   | BL   | BL   | BL   | BL   | BL   |
| Cd           | BL   | BL   | BL   | BL   | BL   | BL   | BL   | BL   |
| Cr(VI)▼      | BL   | BL   | BL   | BL   | BL   | BL   | BL   | BL   |
| PBB          | BL   | BL   | BL   | ---  | BL   | BL   | BL   | BL   |
| PBDE         | BL   | BL   | BL   | ---  | BL   | BL   | BL   | BL   |
| DEHP         | BL   | BL   | BL   | ---  | BL   | BL   | BL   | BL   |
| BBP          | BL   | BL   | BL   | ---  | BL   | BL   | BL   | BL   |
| DBP          | BL   | BL   | BL   | ---  | BL   | BL   | BL   | BL   |
| DIBP         | BL   | BL   | BL   | ---  | BL   | BL   | BL   | BL   |
| Conclusion   | PASS | PASS | PASS | PASS | PASS | PASS | PASS | PASS |

| Test Item(s) | A121 | A122 | A123 | A124 | A125 | A126 | A127 | A128 |
|--------------|------|------|------|------|------|------|------|------|
| Pb           | BL   | BL   | BL   | BL   | BL   | BL   | BL   | BL   |
| Hg           | BL   | BL   | BL   | BL   | BL   | BL   | BL   | BL   |
| Cd           | BL   | BL   | BL   | BL   | BL   | BL   | BL   | BL   |
| Cr(VI)▼      | BL   | BL   | BL   | BL   | BL   | BL   | BL   | BL   |
| PBB          | BL   | BL   | BL   | BL   | BL   | BL   | BL   | BL   |
| PBDE         | BL   | BL   | BL   | BL   | BL   | BL   | BL   | BL   |
| DEHP         | BL   | BL   | BL   | BL   | BL   | BL   | BL   | BL   |
| BBP          | BL   | BL   | BL   | BL   | BL   | BL   | BL   | BL   |
| DBP          | BL   | BL   | BL   | BL   | BL   | BL   | BL   | BL   |
| DIBP         | BL   | BL   | BL   | BL   | BL   | BL   | BL   | BL   |
| Conclusion   | PASS | PASS | PASS | PASS | PASS | PASS | PASS | PASS |

| Test Item(s) | A129 | A130 | A131 | A132 | A133 | A134 | A135 | A136 |
|--------------|------|------|------|------|------|------|------|------|
| Pb           | BL   | BL   | BL   | BL   | BL   | BL   | BL   | BL   |
| Hg           | BL   | BL   | BL   | BL   | BL   | BL   | BL   | BL   |
| Cd           | BL   | BL   | BL   | BL   | BL   | BL   | BL   | BL   |
| Cr(VI)▼      | BL   | BL   | BL   | BL   | BL   | BL   | BL   | BL   |
| PBB          | BL   | BL   | BL   | BL   | BL   | BL   | BL   | BL   |
| PBDE         | BL   | BL   | BL   | BL   | BL   | BL   | BL   | BL   |
| DEHP         | BL   | BL   | BL   | BL   | BL   | BL   | BL   | BL   |
| BBP          | BL   | BL   | BL   | BL   | BL   | BL   | BL   | BL   |
| DBP          | BL   | BL   | BL   | BL   | BL   | BL   | BL   | BL   |
| DIBP         | BL   | BL   | BL   | BL   | BL   | BL   | BL   | BL   |
| Conclusion   | PASS | PASS | PASS | PASS | PASS | PASS | PASS | PASS |

| Test Item(s) | A137 | A138 | A139 | A140 | A141 | A142 | A143 | A144 |
|--------------|------|------|------|------|------|------|------|------|
| Pb           | BL   | BL   | BL   | BL   | BL   | BL   | BL   | BL   |
| Hg           | BL   | BL   | BL   | BL   | BL   | BL   | BL   | BL   |
| Cd           | BL   | BL   | BL   | BL   | BL   | BL   | BL   | BL   |
| Cr(VI)▼      | BL   | BL   | BL   | BL   | BL   | BL   | BL   | BL   |
| PBB          | BL   | BL   | BL   | BL   | BL   | BL   | BL   | BL   |



Unless otherwise agreed in writing, this document is issued by the Company subject to its General Conditions of Service printed overleaf, available on request or accessible at <https://www.sgs.com/en/Terms-and-Conditions>. Attention is drawn to the limitation of liability, indemnification and jurisdiction issues defined therein. Any holder of this document is advised that information contained herein reflects the Company's findings at the time of its intervention only and within the limits of Client's instructions, if any. The Company's sole responsibility is to its Client and this document does not exonerate parties to a transaction from exercising all their rights and obligations under the transaction documents. This document cannot be reproduced except in full, without prior written approval of the Company. Any unauthorized alteration, forgery or falsification of the content or appearance of this document is unlawful and offenders may be prosecuted to the fullest extent of the law. Unless otherwise stated the results shown in this test report refer only to the sample(s) tested.

Attention: To check the authenticity of testing /inspection report & certificate, please contact us at telephone: (86-755) 8307 1443, or email: [CN.Doccheck@sgs.com](mailto:CN.Doccheck@sgs.com)

| Test Item(s) | A137 | A138 | A139 | A140 | A141 | A142 | A143 | A144 |
|--------------|------|------|------|------|------|------|------|------|
| PBDE         | BL   | BL   | BL   | BL   | BL   | BL   | BL   | BL   |
| DEHP         | BL   | BL   | BL   | BL   | BL   | BL   | BL   | BL   |
| BBP          | BL   | BL   | BL   | BL   | BL   | BL   | BL   | BL   |
| DBP          | BL   | BL   | BL   | BL   | BL   | BL   | BL   | BL   |
| DIBP         | BL   | BL   | BL   | BL   | BL   | BL   | BL   | BL   |
| Conclusion   | PASS | PASS | PASS | PASS | PASS | PASS | PASS | PASS |

| Test Item(s) | A145 | A146 | A147 | A148 | A149 | A150 | A151 | A152 |
|--------------|------|------|------|------|------|------|------|------|
| Pb           | BL   | BL   | BL   | BL   | BL   | BL   | BL   | BL   |
| Hg           | BL   | BL   | BL   | BL   | BL   | BL   | BL   | BL   |
| Cd           | BL   | BL   | BL   | BL   | BL   | BL   | BL   | BL   |
| Cr(VI)▼      | BL   | BL   | BL   | BL   | BL   | BL   | BL   | BL   |
| PBB          | BL   | BL   | BL   | BL   | BL   | BL   | BL   | BL   |
| PBDE         | BL   | BL   | BL   | BL   | BL   | BL   | BL   | BL   |
| DEHP         | BL   | BL   | BL   | BL   | BL   | BL   | BL   | BL   |
| BBP          | BL   | BL   | BL   | BL   | BL   | BL   | BL   | BL   |
| DBP          | BL   | BL   | BL   | BL   | BL   | BL   | BL   | BL   |
| DIBP         | BL   | BL   | BL   | BL   | BL   | BL   | BL   | BL   |
| Conclusion   | PASS | PASS | PASS | PASS | PASS | PASS | PASS | PASS |

| Test Item(s) | A153 | A154 | A155 | A156 | A157 | A158 | A159 | A160 |
|--------------|------|------|------|------|------|------|------|------|
| Pb           | BL   | BL   | BL   | BL   | BL   | BL   | BL   | BL   |
| Hg           | BL   | BL   | BL   | BL   | BL   | BL   | BL   | BL   |
| Cd           | BL   | BL   | BL   | BL   | BL   | BL   | BL   | BL   |
| Cr(VI)▼      | BL   | BL   | BL   | BL   | BL   | BL   | BL   | BL   |
| PBB          | ND   | BL   | BL   | BL   | BL   | BL   | BL   | BL   |
| PBDE         | ND   | BL   | BL   | BL   | BL   | BL   | BL   | BL   |
| DEHP         | ND   | BL   | BL   | BL   | BL   | BL   | BL   | BL   |
| BBP          | ND   | BL   | BL   | BL   | BL   | BL   | BL   | BL   |
| DBP          | ND   | BL   | BL   | BL   | BL   | BL   | BL   | BL   |
| DIBP         | ND   | BL   | BL   | BL   | BL   | BL   | BL   | BL   |
| Conclusion   | PASS | PASS | PASS | PASS | PASS | PASS | PASS | PASS |

| Test Item(s) | A161 | A162 | A163 | A164 | A165 | A166 | A167 | A168 |
|--------------|------|------|------|------|------|------|------|------|
| Pb           | BL   | BL   | BL   | BL   | BL   | BL   | BL   | BL   |
| Hg           | BL   | BL   | BL   | BL   | BL   | BL   | BL   | BL   |
| Cd           | BL   | BL   | BL   | BL   | BL   | BL   | BL   | BL   |
| Cr(VI)▼      | BL   | BL   | BL   | BL   | BL   | BL   | BL   | BL   |
| PBB          | BL   | BL   | BL   | BL   | BL   | BL   | BL   | BL   |
| PBDE         | BL   | BL   | BL   | BL   | BL   | BL   | BL   | BL   |
| DEHP         | BL   | BL   | BL   | BL   | BL   | BL   | BL   | BL   |
| BBP          | BL   | BL   | BL   | BL   | BL   | BL   | BL   | BL   |
| DBP          | BL   | BL   | BL   | BL   | BL   | BL   | BL   | BL   |
| DIBP         | BL   | BL   | BL   | BL   | BL   | BL   | BL   | BL   |
| Conclusion   | PASS | PASS | PASS | PASS | PASS | PASS | PASS | PASS |



Unless otherwise agreed in writing, this document is issued by the Company subject to its General Conditions of Service printed overleaf, available on request or accessible at <https://www.sgs.com/en/Terms-and-Conditions>. Attention is drawn to the limitation of liability, indemnification and jurisdiction issues defined therein. Any holder of this document is advised that information contained hereon reflects the Company's findings at the time of its intervention only and within the limits of Client's instructions, if any. The Company's sole responsibility is to its Client and this document does not exonerate parties to a transaction from exercising all their rights and obligations under the transaction documents. This document cannot be reproduced except in full, without prior written approval of the Company. Any unauthorized alteration, forgery or falsification of the content or appearance of this document is unlawful and offenders may be prosecuted to the fullest extent of the law. Unless otherwise stated the results shown in this test report refer only to the sample(s) tested.

Attention: To check the authenticity of testing /inspection report & certificate, please contact us at telephone: (86-755) 8307 1443, or email: [CN.Doccheck@sgs.com](mailto:CN.Doccheck@sgs.com)

| Test Item(s) | A169 | A170 | A171 | A172 | A173 | A174 | A175 | A176 |
|--------------|------|------|------|------|------|------|------|------|
| Pb           | BL   | BL   | BL   | BL   | BL   | BL   | BL   | BL   |
| Hg           | BL   | BL   | BL   | BL   | BL   | BL   | BL   | BL   |
| Cd           | BL   | BL   | BL   | BL   | BL   | BL   | BL   | BL   |
| Cr(VI)▼      | BL   | BL   | BL   | BL   | BL   | BL   | BL   | BL   |
| PBB          | BL   | BL   | BL   | BL   | BL   | BL   | BL   | BL   |
| PBDE         | BL   | BL   | BL   | BL   | BL   | BL   | BL   | BL   |
| DEHP         | BL   | BL   | BL   | BL   | BL   | BL   | BL   | BL   |
| BBP          | BL   | BL   | BL   | BL   | BL   | BL   | BL   | BL   |
| DBP          | BL   | BL   | BL   | BL   | BL   | BL   | BL   | BL   |
| DIBP         | BL   | BL   | BL   | BL   | BL   | BL   | BL   | BL   |
| Conclusion   | PASS | PASS | PASS | PASS | PASS | PASS | PASS | PASS |

| Test Item(s) | A177 | A178 | A179 | A180 | A181 | A182 | A183 | A184 |
|--------------|------|------|------|------|------|------|------|------|
| Pb           | BL   | BL   | BL   | BL   | BL   | BL   | BL   | BL   |
| Hg           | BL   | BL   | BL   | BL   | BL   | BL   | BL   | BL   |
| Cd           | BL   | BL   | BL   | BL   | BL   | BL   | BL   | BL   |
| Cr(VI)▼      | BL   | BL   | BL   | BL   | BL   | BL   | BL   | BL   |
| PBB          | BL   | BL   | BL   | BL   | BL   | BL   | BL   | BL   |
| PBDE         | BL   | BL   | BL   | BL   | BL   | BL   | BL   | BL   |
| DEHP         | BL   | BL   | BL   | BL   | BL   | BL   | BL   | BL   |
| BBP          | BL   | BL   | BL   | BL   | BL   | BL   | BL   | BL   |
| DBP          | BL   | BL   | BL   | BL   | BL   | BL   | BL   | BL   |
| DIBP         | BL   | BL   | BL   | BL   | BL   | BL   | BL   | BL   |
| Conclusion   | PASS | PASS | PASS | PASS | PASS | PASS | PASS | PASS |

| Test Item(s) | A185 | A186 | A187 | A188 | A189 | A190 | A191 | A192 |
|--------------|------|------|------|------|------|------|------|------|
| Pb           | BL   | BL   | BL   | BL   | BL   | BL   | BL   | BL   |
| Hg           | BL   | BL   | BL   | BL   | BL   | BL   | BL   | BL   |
| Cd           | BL   | BL   | BL   | BL   | BL   | BL   | BL   | BL   |
| Cr(VI)▼      | BL   | BL   | BL   | BL   | BL   | BL   | BL   | BL   |
| PBB          | BL   | BL   | BL   | BL   | BL   | BL   | BL   | BL   |
| PBDE         | BL   | BL   | BL   | BL   | BL   | BL   | BL   | BL   |
| DEHP         | BL   | BL   | BL   | BL   | BL   | BL   | BL   | BL   |
| BBP          | BL   | BL   | BL   | BL   | BL   | BL   | BL   | BL   |
| DBP          | BL   | BL   | BL   | BL   | BL   | BL   | BL   | BL   |
| DIBP         | BL   | BL   | BL   | BL   | BL   | BL   | BL   | BL   |
| Conclusion   | PASS | PASS | PASS | PASS | PASS | PASS | PASS | PASS |

| Test Item(s) | A193 | A194 | A195 | A196 | A197 | A198 | A199 | A200 |
|--------------|------|------|------|------|------|------|------|------|
| Pb           | BL   | BL   | BL   | BL   | BL   | BL   | BL   | BL   |
| Hg           | BL   | BL   | BL   | BL   | BL   | BL   | BL   | BL   |
| Cd           | BL   | BL   | BL   | BL   | BL   | BL   | BL   | BL   |
| Cr(VI)▼      | BL   | BL   | BL   | BL   | BL   | BL   | BL   | BL   |
| PBB          | BL   | BL   | BL   | BL   | BL   | BL   | BL   | BL   |



Unless otherwise agreed in writing, this document is issued by the Company subject to its General Conditions of Service printed overleaf, available on request or accessible at <https://www.sgs.com/en/Terms-and-Conditions>. Attention is drawn to the limitation of liability, indemnification and jurisdiction issues defined therein. Any holder of this document is advised that information contained herein reflects the Company's findings at the time of its intervention only and within the limits of Client's instructions, if any. The Company's sole responsibility is to its Client and this document does not exonerate parties to a transaction from exercising all their rights and obligations under the transaction documents. This document cannot be reproduced except in full, without prior written approval of the Company. Any unauthorized alteration, forgery or falsification of the content or appearance of this document is unlawful and offenders may be prosecuted to the fullest extent of the law. Unless otherwise stated the results shown in this test report refer only to the sample(s) tested.

Attention: To check the authenticity of testing /inspection report & certificate, please contact us at telephone: (86-755) 8307 1443, or email: [CN.Doccheck@sgs.com](mailto:CN.Doccheck@sgs.com)

| Test Item(s) | A193 | A194 | A195 | A196 | A197 | A198 | A199 | A200 |
|--------------|------|------|------|------|------|------|------|------|
| PBDE         | BL   | BL   | BL   | BL   | BL   | BL   | BL   | BL   |
| DEHP         | BL   | BL   | BL   | BL   | BL   | BL   | BL   | BL   |
| BBP          | BL   | BL   | BL   | BL   | BL   | BL   | BL   | BL   |
| DBP          | BL   | BL   | BL   | BL   | BL   | BL   | BL   | BL   |
| DIBP         | BL   | BL   | BL   | BL   | BL   | BL   | BL   | BL   |
| Conclusion   | PASS | PASS | PASS | PASS | PASS | PASS | PASS | PASS |

| Test Item(s) | A201 | A202 | A203 | A204 | A205 | A206 | A207 | A208 |
|--------------|------|------|------|------|------|------|------|------|
| Pb           | BL   | BL   | BL   | BL   | BL   | BL   | BL   | BL   |
| Hg           | BL   | BL   | BL   | BL   | BL   | BL   | BL   | BL   |
| Cd           | BL   | BL   | BL   | BL   | BL   | BL   | BL   | BL   |
| Cr(VI)▼      | BL   | BL   | BL   | BL   | BL   | BL   | BL   | BL   |
| PBB          | BL   | BL   | BL   | BL   | BL   | BL   | BL   | BL   |
| PBDE         | BL   | BL   | BL   | BL   | BL   | BL   | BL   | BL   |
| DEHP         | BL   | BL   | BL   | BL   | BL   | BL   | BL   | BL   |
| BBP          | BL   | BL   | BL   | BL   | BL   | BL   | BL   | BL   |
| DBP          | BL   | BL   | BL   | BL   | BL   | BL   | BL   | BL   |
| DIBP         | BL   | BL   | BL   | BL   | BL   | BL   | BL   | BL   |
| Conclusion   | PASS | PASS | PASS | PASS | PASS | PASS | PASS | PASS |

| Test Item(s) | A209 | A210 | A211 | A212 | A213 | A214 | A215 | A216 |
|--------------|------|------|------|------|------|------|------|------|
| Pb           | BL   | BL   | BL   | BL   | BL   | BL   | BL   | BL   |
| Hg           | BL   | BL   | BL   | BL   | BL   | BL   | BL   | BL   |
| Cd           | BL   | BL   | BL   | BL   | BL   | BL   | BL   | BL   |
| Cr(VI)▼      | BL   | BL   | BL   | BL   | BL   | BL   | BL   | BL   |
| PBB          | ND   | BL   | BL   | BL   | BL   | BL   | BL   | BL   |
| PBDE         | ND   | BL   | BL   | BL   | BL   | BL   | BL   | BL   |
| DEHP         | ND   | BL   | BL   | BL   | BL   | BL   | BL   | BL   |
| BBP          | ND   | BL   | BL   | BL   | BL   | BL   | BL   | BL   |
| DBP          | ND   | BL   | BL   | BL   | BL   | BL   | BL   | BL   |
| DIBP         | ND   | BL   | BL   | BL   | BL   | BL   | BL   | BL   |
| Conclusion   | PASS | PASS | PASS | PASS | PASS | PASS | PASS | PASS |

| Test Item(s) | A217 | A218 | A219 | A220 | A221 | A222 | A223 | A224 |
|--------------|------|------|------|------|------|------|------|------|
| Pb           | BL   | BL   | BL   | BL   | BL   | BL   | BL   | BL   |
| Hg           | BL   | BL   | BL   | BL   | BL   | BL   | BL   | BL   |
| Cd           | BL   | BL   | BL   | BL   | BL   | BL   | BL   | BL   |
| Cr(VI)▼      | BL   | BL   | BL   | BL   | BL   | BL   | BL   | BL   |
| PBB          | BL   | BL   | BL   | BL   | BL   | BL   | BL   | BL   |
| PBDE         | BL   | BL   | BL   | BL   | BL   | BL   | BL   | BL   |
| DEHP         | BL   | BL   | BL   | BL   | BL   | BL   | BL   | BL   |
| BBP          | BL   | BL   | BL   | BL   | BL   | BL   | BL   | BL   |
| DBP          | BL   | BL   | BL   | BL   | BL   | BL   | BL   | BL   |
| DIBP         | BL   | BL   | BL   | BL   | BL   | BL   | BL   | BL   |
| Conclusion   | PASS | PASS | PASS | PASS | PASS | PASS | PASS | PASS |



Unless otherwise agreed in writing, this document is issued by the Company subject to its General Conditions of Service printed overleaf, available on request or accessible at <https://www.sgs.com/en/Terms-and-Conditions>. Attention is drawn to the limitation of liability, indemnification and jurisdiction issues defined therein. Any holder of this document is advised that information contained hereon reflects the Company's findings at the time of its intervention only and within the limits of Client's instructions, if any. The Company's sole responsibility is to its Client and this document does not exonerate parties to a transaction from exercising all their rights and obligations under the transaction documents. This document cannot be reproduced except in full, without prior written approval of the Company. Any unauthorized alteration, forgery or falsification of the content or appearance of this document is unlawful and offenders may be prosecuted to the fullest extent of the law. Unless otherwise stated the results shown in this test report refer only to the sample(s) tested.

**Attention: To check the authenticity of testing /inspection report & certificate, please contact us at telephone: (86-755) 8307 1443, or email: CN.Doccheck@sgs.com**

| Test Item(s) | A225 | A226 | A227 | A228 | A229 | A230 | A231 | A232 |
|--------------|------|------|------|------|------|------|------|------|
| Pb           | BL   | BL   | BL   | BL   | BL   | BL   | BL   | BL   |
| Hg           | BL   | BL   | BL   | BL   | BL   | BL   | BL   | BL   |
| Cd           | BL   | BL   | BL   | BL   | BL   | BL   | BL   | BL   |
| Cr(VI)▼      | BL   | BL   | BL   | BL   | BL   | BL   | BL   | BL   |
| PBB          | BL   | BL   | BL   | BL   | BL   | BL   | BL   | BL   |
| PBDE         | BL   | BL   | BL   | BL   | BL   | BL   | BL   | BL   |
| DEHP         | BL   | BL   | BL   | BL   | BL   | BL   | BL   | BL   |
| BBP          | BL   | BL   | BL   | BL   | BL   | BL   | BL   | BL   |
| DBP          | BL   | BL   | BL   | BL   | BL   | BL   | BL   | BL   |
| DIBP         | BL   | BL   | BL   | BL   | BL   | BL   | BL   | BL   |
| Conclusion   | PASS | PASS | PASS | PASS | PASS | PASS | PASS | PASS |

| Test Item(s) | A233 | A234 | A235 | A236 | A237 | A238 | A239 | A240 |
|--------------|------|------|------|------|------|------|------|------|
| Pb           | BL   | BL   | BL   | BL   | BL   | BL   | BL   | BL   |
| Hg           | BL   | BL   | BL   | BL   | BL   | BL   | BL   | BL   |
| Cd           | BL   | BL   | BL   | BL   | BL   | BL   | BL   | BL   |
| Cr(VI)▼      | BL   | BL   | BL   | BL   | BL   | BL   | BL   | BL   |
| PBB          | BL   | BL   | BL   | BL   | BL   | BL   | BL   | BL   |
| PBDE         | BL   | BL   | BL   | BL   | BL   | BL   | BL   | BL   |
| DEHP         | BL   | BL   | BL   | BL   | BL   | BL   | BL   | BL   |
| BBP          | BL   | BL   | BL   | BL   | BL   | BL   | BL   | BL   |
| DBP          | BL   | BL   | BL   | BL   | BL   | BL   | BL   | BL   |
| DIBP         | BL   | BL   | BL   | BL   | BL   | BL   | BL   | BL   |
| Conclusion   | PASS | PASS | PASS | PASS | PASS | PASS | PASS | PASS |

| Test Item(s) | A241 | A242 | A243 | A244 | A245 | A246 | A247 | A248 |
|--------------|------|------|------|------|------|------|------|------|
| Pb           | BL   | BL   | BL   | BL   | BL   | BL   | BL   | BL   |
| Hg           | BL   | BL   | BL   | BL   | BL   | BL   | BL   | BL   |
| Cd           | BL   | BL   | BL   | BL   | BL   | BL   | BL   | BL   |
| Cr(VI)▼      | BL   | BL   | BL   | BL   | BL   | BL   | BL   | BL   |
| PBB          | BL   | BL   | BL   | BL   | BL   | BL   | BL   | BL   |
| PBDE         | BL   | BL   | BL   | BL   | BL   | BL   | BL   | BL   |
| DEHP         | BL   | BL   | BL   | BL   | BL   | BL   | BL   | BL   |
| BBP          | BL   | BL   | BL   | BL   | BL   | BL   | BL   | BL   |
| DBP          | BL   | BL   | BL   | BL   | BL   | BL   | BL   | BL   |
| DIBP         | BL   | BL   | BL   | BL   | BL   | BL   | BL   | BL   |
| Conclusion   | PASS | PASS | PASS | PASS | PASS | PASS | PASS | PASS |

| Test Item(s) | A249 | A250 | A251 | A252 | A253 | A254 | A255 | A256 |
|--------------|------|------|------|------|------|------|------|------|
| Pb           | BL   | BL   | BL   | BL   | BL   | BL   | BL   | BL   |
| Hg           | BL   | BL   | BL   | BL   | BL   | BL   | BL   | BL   |
| Cd           | BL   | BL   | BL   | BL   | BL   | BL   | BL   | BL   |
| Cr(VI)▼      | BL   | BL   | BL   | BL   | BL   | BL   | BL   | BL   |
| PBB          | BL   | BL   | BL   | BL   | BL   | ND   | BL   | BL   |



Unless otherwise agreed in writing, this document is issued by the Company subject to its General Conditions of Service printed overleaf, available on request or accessible at <https://www.sgs.com/en/Terms-and-Conditions>. Attention is drawn to the limitation of liability, indemnification and jurisdiction issues defined therein. Any holder of this document is advised that information contained herein reflects the Company's findings at the time of its intervention only and within the limits of Client's instructions, if any. The Company's sole responsibility is to its Client and this document does not exonerate parties to a transaction from exercising all their rights and obligations under the transaction documents. This document cannot be reproduced except in full, without prior written approval of the Company. Any unauthorized alteration, forgery or falsification of the content or appearance of this document is unlawful and offenders may be prosecuted to the fullest extent of the law. Unless otherwise stated the results shown in this test report refer only to the sample(s) tested.

Attention: To check the authenticity of testing /inspection report & certificate, please contact us at telephone: (86-755) 8307 1443, or email: [CN.Doccheck@sgs.com](mailto:CN.Doccheck@sgs.com)

| Test Item(s) | A249 | A250 | A251 | A252 | A253 | A254 | A255 | A256 |
|--------------|------|------|------|------|------|------|------|------|
| PBDE         | BL   | BL   | BL   | BL   | BL   | ND   | BL   | BL   |
| DEHP         | BL   | BL   | BL   | BL   | BL   | ND   | BL   | BL   |
| BBP          | BL   | BL   | BL   | BL   | BL   | ND   | BL   | BL   |
| DBP          | BL   | BL   | BL   | BL   | BL   | ND   | BL   | BL   |
| DIBP         | BL   | BL   | BL   | BL   | BL   | ND   | BL   | BL   |
| Conclusion   | PASS | PASS | PASS | PASS | PASS | PASS | PASS | PASS |

| Test Item(s) | A257 | A258 | A259 | A260 | A261 | A262 | A263 | A264 |
|--------------|------|------|------|------|------|------|------|------|
| Pb           | BL   | BL   | BL   | BL   | BL   | BL   | BL   | BL   |
| Hg           | BL   | BL   | BL   | BL   | BL   | BL   | BL   | BL   |
| Cd           | BL   | BL   | BL   | BL   | BL   | BL   | BL   | BL   |
| Cr(VI)▼      | BL   | BL   | ND   | BL   | BL   | BL   | BL   | BL   |
| PBB          | ---  | BL   | ---  | BL   | BL   | ---  | ---  | ND   |
| PBDE         | ---  | BL   | ---  | BL   | BL   | ---  | ---  | ND   |
| DEHP         | ---  | BL   | ---  | BL   | BL   | ---  | ---  | ND   |
| BBP          | ---  | BL   | ---  | BL   | BL   | ---  | ---  | ND   |
| DBP          | ---  | BL   | ---  | BL   | BL   | ---  | ---  | ND   |
| DIBP         | ---  | BL   | ---  | BL   | BL   | ---  | ---  | ND   |
| Conclusion   | PASS | PASS | PASS | PASS | PASS | PASS | PASS | PASS |

| Test Item(s) | A265 | A266 | A267 | A268 | A269 | A270 | A271 | A272 |
|--------------|------|------|------|------|------|------|------|------|
| Pb           | BL   | BL   | BL   | BL   | BL   | BL   | BL   | BL   |
| Hg           | BL   | BL   | BL   | BL   | BL   | BL   | BL   | BL   |
| Cd           | BL   | BL   | BL   | BL   | BL   | BL   | BL   | BL   |
| Cr(VI)▼      | BL   | BL   | BL   | BL   | ND   | BL   | BL   | BL   |
| PBB          | ---  | BL   | ---  | BL   | ---  | ---  | ---  | BL   |
| PBDE         | ---  | BL   | ---  | BL   | ---  | ---  | ---  | BL   |
| DEHP         | ---  | BL   | ---  | BL   | ---  | ---  | ---  | BL   |
| BBP          | ---  | BL   | ---  | BL   | ---  | ---  | ---  | BL   |
| DBP          | ---  | BL   | ---  | BL   | ---  | ---  | ---  | BL   |
| DIBP         | ---  | BL   | ---  | BL   | ---  | ---  | ---  | BL   |
| Conclusion   | PASS | PASS | PASS | PASS | PASS | PASS | PASS | PASS |

| Test Item(s) | A273 | A274 | A275 | A276 | A277 | A278 | A279 | A280 |
|--------------|------|------|------|------|------|------|------|------|
| Pb           | BL   | BL   | BL   | BL   | BL   | BL   | BL   | BL   |
| Hg           | BL   | BL   | BL   | BL   | BL   | BL   | BL   | BL   |
| Cd           | BL   | BL   | BL   | BL   | BL   | BL   | BL   | BL   |
| Cr(VI)▼      | BL   | BL   | ND   | BL   | BL   | BL   | BL   | BL   |
| PBB          | BL   | ---  | ---  | BL   | ---  | BL   | BL   | BL   |
| PBDE         | BL   | ---  | ---  | BL   | ---  | BL   | BL   | BL   |
| DEHP         | BL   | ---  | ---  | BL   | ---  | BL   | BL   | BL   |
| BBP          | BL   | ---  | ---  | BL   | ---  | BL   | BL   | BL   |
| DBP          | BL   | ---  | ---  | BL   | ---  | BL   | BL   | BL   |
| DIBP         | BL   | ---  | ---  | BL   | ---  | BL   | BL   | BL   |
| Conclusion   | PASS | PASS | PASS | PASS | PASS | PASS | PASS | PASS |



Unless otherwise agreed in writing, this document is issued by the Company subject to its General Conditions of Service printed overleaf, available on request or accessible at <https://www.sgs.com/en/Terms-and-Conditions>. Attention is drawn to the limitation of liability, indemnification and jurisdiction issues defined therein. Any holder of this document is advised that information contained hereon reflects the Company's findings at the time of its intervention only and within the limits of Client's instructions, if any. The Company's sole responsibility is to its Client and this document does not exonerate parties to a transaction from exercising all their rights and obligations under the transaction documents. This document cannot be reproduced except in full, without prior written approval of the Company. Any unauthorized alteration, forgery or falsification of the content or appearance of this document is unlawful and offenders may be prosecuted to the fullest extent of the law. Unless otherwise stated the results shown in this test report refer only to the sample(s) tested.

Attention: To check the authenticity of testing / inspection report & certificate, please contact us at telephone: (86-755) 8307 1443, or email: [CN.Doccheck@sgs.com](mailto:CN.Doccheck@sgs.com)

| Test Item(s) | A281 | A282 | A283 | A284 | A285 | A286 | A287 | A288 |
|--------------|------|------|------|------|------|------|------|------|
| Pb           | BL   | BL   | BL   | BL   | BL   | BL   | BL   | BL   |
| Hg           | BL   | BL   | BL   | BL   | BL   | BL   | BL   | BL   |
| Cd           | BL   | BL   | BL   | BL   | BL   | BL   | BL   | BL   |
| Cr(VI)▼      | ND   | BL   | BL   | BL   | BL   | BL   | BL   | ND   |
| PBB          | BL   | ---  | BL   | ND   | BL   | BL   | BL   | ---  |
| PBDE         | BL   | ---  | BL   | ND   | BL   | BL   | BL   | ---  |
| DEHP         | BL   | ---  | BL   | ND   | BL   | BL   | BL   | ---  |
| BBP          | BL   | ---  | BL   | ND   | BL   | BL   | BL   | ---  |
| DBP          | BL   | ---  | BL   | ND   | BL   | BL   | BL   | ---  |
| DIBP         | BL   | ---  | BL   | ND   | BL   | BL   | BL   | ---  |
| Conclusion   | PASS | PASS | PASS | PASS | PASS | PASS | PASS | PASS |

| Test Item(s) | A289 | A290 | A291 | A292 | A293 | A294 | A295 | A296 |
|--------------|------|------|------|------|------|------|------|------|
| Pb           | BL   | BL   | BL   | BL   | BL   | BL   | BL   | BL   |
| Hg           | BL   | BL   | BL   | BL   | BL   | BL   | BL   | BL   |
| Cd           | BL   | BL   | BL   | BL   | BL   | BL   | BL   | BL   |
| Cr(VI)▼      | BL   | BL   | BL   | BL   | ND   | ND   | BL   | BL   |
| PBB          | BL   | BL   | ---  | ---  | ---  | ---  | BL   | ---  |
| PBDE         | BL   | BL   | ---  | ---  | ---  | ---  | BL   | ---  |
| DEHP         | BL   | BL   | ---  | ---  | ---  | ---  | BL   | ---  |
| BBP          | BL   | BL   | ---  | ---  | ---  | ---  | BL   | ---  |
| DBP          | BL   | BL   | ---  | ---  | ---  | ---  | BL   | ---  |
| DIBP         | BL   | BL   | ---  | ---  | ---  | ---  | BL   | ---  |
| Conclusion   | PASS | PASS | PASS | PASS | PASS | PASS | PASS | PASS |

| Test Item(s) | A297 | A298 | A299 | A300 | A301 | A302 | A303 | A304 |
|--------------|------|------|------|------|------|------|------|------|
| Pb           | BL   | BL   | BL   | BL   | BL   | BL   | BL   | BL   |
| Hg           | BL   | BL   | BL   | BL   | BL   | BL   | BL   | BL   |
| Cd           | BL   | BL   | BL   | BL   | BL   | BL   | BL   | BL   |
| Cr(VI)▼      | BL   | BL   | BL   | BL   | BL   | BL   | BL   | BL   |
| PBB          | BL   | BL   | BL   | ---  | BL   | BL   | BL   | BL   |
| PBDE         | BL   | BL   | BL   | ---  | BL   | BL   | BL   | BL   |
| DEHP         | BL   | BL   | BL   | ---  | BL   | BL   | BL   | BL   |
| BBP          | BL   | BL   | BL   | ---  | BL   | BL   | BL   | BL   |
| DBP          | BL   | BL   | BL   | ---  | BL   | BL   | BL   | BL   |
| DIBP         | BL   | BL   | BL   | ---  | BL   | BL   | BL   | BL   |
| Conclusion   | PASS | PASS | PASS | PASS | PASS | PASS | PASS | PASS |

| Test Item(s) | A305 | A306 | A307 | A308 | A316 | A317 | A318 | A319 |
|--------------|------|------|------|------|------|------|------|------|
| Pb           | BL   | BL   | BL   | BL   | BL   | BL   | BL   | BL   |
| Hg           | BL   | BL   | BL   | BL   | BL   | BL   | BL   | BL   |
| Cd           | BL   | BL   | BL   | BL   | BL   | BL   | BL   | BL   |
| Cr(VI)▼      | BL   | BL   | BL   | BL   | BL   | BL   | BL   | BL   |
| PBB          | BL   | ---  | BL   | ---  | ND   | ND   | ND   | ND   |



Unless otherwise agreed in writing, this document is issued by the Company subject to its General Conditions of Service printed overleaf, available on request or accessible at <https://www.sgs.com/en/Terms-and-Conditions>. Attention is drawn to the limitation of liability, indemnification and jurisdiction issues defined therein. Any holder of this document is advised that information contained herein reflects the Company's findings at the time of its intervention only and within the limits of Client's instructions, if any. The Company's sole responsibility is to its Client and this document does not exonerate parties to a transaction from exercising all their rights and obligations under the transaction documents. This document cannot be reproduced except in full, without prior written approval of the Company. Any unauthorized alteration, forgery or falsification of the content or appearance of this document is unlawful and offenders may be prosecuted to the fullest extent of the law. Unless otherwise stated the results shown in this test report refer only to the sample(s) tested.

Attention: To check the authenticity of testing / inspection report & certificate, please contact us at telephone: (86-755) 8307 1443, or email: [CN.Doccheck@sgs.com](mailto:CN.Doccheck@sgs.com)

| Test Item(s) | A305 | A306 | A307 | A308 | A316 | A317 | A318 | A319 |
|--------------|------|------|------|------|------|------|------|------|
| PBDE         | BL   | ---  | BL   | ---  | ND   | ND   | ND   | ND   |
| DEHP         | BL   | ---  | BL   | ---  | ND   | ND   | ND   | ND   |
| BBP          | BL   | ---  | BL   | ---  | ND   | ND   | ND   | ND   |
| DBP          | BL   | ---  | BL   | ---  | ND   | ND   | ND   | ND   |
| DIBP         | BL   | ---  | BL   | ---  | ND   | ND   | ND   | ND   |
| Conclusion   | PASS | PASS | PASS | PASS | PASS | PASS | PASS | PASS |

| Test Item(s) | A320 | A321 | A322 | A323 | A324 | A325 | A326 | A327 |
|--------------|------|------|------|------|------|------|------|------|
| Pb           | BL   | BL   | BL   | BL   | BL   | BL   | BL   | BL   |
| Hg           | BL   | BL   | BL   | BL   | BL   | BL   | BL   | BL   |
| Cd           | BL   | BL   | BL   | BL   | BL   | BL   | BL   | BL   |
| Cr(VI)▼      | BL   | BL   | BL   | BL   | BL   | BL   | BL   | BL   |
| PBB          | ND   | ND   | ND   | ND   | ND   | ND   | ND   | ND   |
| PBDE         | ND   | ND   | ND   | ND   | ND   | ND   | ND   | ND   |
| DEHP         | ND   | ND   | ND   | ND   | ND   | ND   | ND   | ND   |
| BBP          | ND   | ND   | ND   | ND   | ND   | ND   | ND   | ND   |
| DBP          | ND   | ND   | ND   | ND   | ND   | ND   | ND   | ND   |
| DIBP         | ND   | ND   | ND   | ND   | ND   | ND   | ND   | ND   |
| Conclusion   | PASS | PASS | PASS | PASS | PASS | PASS | PASS | PASS |

| Test Item(s) | A328 | A329 | A330 | A331 | A332 | A333 | A334 | A335 |
|--------------|------|------|------|------|------|------|------|------|
| Pb           | BL   | BL   | BL   | BL   | BL   | BL   | BL   | BL   |
| Hg           | BL   | BL   | BL   | BL   | BL   | BL   | BL   | BL   |
| Cd           | BL   | BL   | BL   | BL   | BL   | BL   | BL   | BL   |
| Cr(VI)▼      | BL   | BL   | BL   | BL   | BL   | BL   | BL   | BL   |
| PBB          | ND   | ND   | ND   | ND   | ND   | ND   | ND   | ND   |
| PBDE         | ND   | ND   | ND   | ND   | ND   | ND   | ND   | ND   |
| DEHP         | ND   | ND   | ND   | ND   | ND   | ND   | ND   | ND   |
| BBP          | ND   | ND   | ND   | ND   | ND   | ND   | ND   | ND   |
| DBP          | ND   | ND   | ND   | ND   | ND   | ND   | ND   | ND   |
| DIBP         | ND   | ND   | ND   | ND   | ND   | ND   | ND   | ND   |
| Conclusion   | PASS | PASS | PASS | PASS | PASS | PASS | PASS | PASS |



**Notes:**

(1) Interpretation of screening results by X-ray fluorescence spectrometry (XRF):

(a) Screening limits in mg/kg for regulated elements in various matrices according to IEC 62321-3-1:2013 Annex A as below table.

| Element | Polymers   | Metals   | Composite Materials                                  |
|---------|--|--|--|
| Cd      | $BL \leq (70-3\sigma) < X < (130+3\sigma) \leq OL$   | $BL \leq (70-3\sigma) < X < (130+3\sigma) \leq OL$   | $LOD < X < (150+3\sigma) \leq OL$                    |
| Pb      | $BL \leq (700-3\sigma) < X < (1300+3\sigma) \leq OL$ | $BL \leq (700-3\sigma) < X < (1300+3\sigma) \leq OL$ | $BL \leq (500-3\sigma) < X < (1500+3\sigma) \leq OL$ |
| Hg      | $BL \leq (700-3\sigma) < X < (1300+3\sigma) \leq OL$ | $BL \leq (700-3\sigma) < X < (1300+3\sigma) \leq OL$ | $BL \leq (500-3\sigma) < X < (1500+3\sigma) \leq OL$ |
| Br      | $BL \leq (300-3\sigma) < X$                          | Not applicable                                       | $BL \leq (250-3\sigma) < X$                          |
| Cr      | $BL \leq (700-3\sigma) < X$                          | $BL \leq (700-3\sigma) < X$                          | $BL \leq (500-3\sigma) < X$                          |

(b) If the maximum allowed level restricts PBB/PBDE and Cr(VI) rather than Br and Cr, the exceptions are the XRF determinations of Br and Cr. If the quantitative results for the elements Br and/or Cr are higher than the limit (for Br calculated based on the stoichiometry of Br in the most common congeners of PBB/PBDE), the sample is "inconclusive".

(c) Results are obtained by EDXRF for primary screening, LOD = Limit of Detection, BL = Below Limit, OL= Over Limit, IN (The symbol X marks the region)=Inconclusive, where further investigation is necessary, and further chemical testing by ICP-OES (for Cd, Pb, Hg), UV-Vis (for Cr(VI)) and GC-MS (for PBB/PBDE) are recommended to be performed.

(d) The EDXRF screening test for elements – The reading may be different to the actual content in the sample be of non-uniformity composition.

(2) Screening results of Phthalates (PHTH) below the limits are shown as "BL". Further chemical testing by GC-MS is to be performed if the results exceed limits.

| Test Items                         | CAS No.  |
|------------------------------------|----------|
| Bis(2-ethylhexyl) phthalate (DEHP) | 117-81-7 |
| Butyl benzyl phthalate (BBP)       | 85-68-7  |
| Dibutyl phthalate (DBP)            | 84-74-2  |
| Diisobutyl phthalate (DIBP)        | 84-69-5  |

(3) Interpretation of results by chemical tests:

(a) mg/kg = 0.0001%, MDL=Method detection Limit, ND = Not Detected (<MDL), --- = Not Applicable.

(b) Unit and MDL in wet chemical test

| Test Items | Pb    | Hg    | Cd    | DEHP  | BBP   | DBP   | DIBP  |
|------------|-------|-------|-------|-------|-------|-------|-------|
| Unit       | mg/kg | mg/kg | mg/kg | mg/kg | mg/kg | mg/kg | mg/kg |
| MDL        | 10    | 10    | 10    | 100   | 100   | 100   | 100   |

The MDL for single compound of PBB and PBDE is 100 mg/kg,

MDL of Cr(VI) for polymer, composite and leather sample is 10 mg/kg.

MDL of Cr(VI) for metal sample is 0.10 µg/cm².

(c) ▼ =Metal sample

a. The sample is positive for Cr(VI) if the Cr(VI) concentration is greater than 0.13 µg/cm². The sample coating is considered to contain Cr(VI).

b. The sample is negative for Cr(VI) if Cr(VI) is ND (concentration less than 0.10 µg/cm²). The coating is considered a non-Cr(VI) based coating

c. The result between 0.10 µg/cm² and 0.13 µg/cm² is considered to be inconclusive-unavoidable coating variations may influence the determination

Information on storage conditions and production date of the tested sample is unavailable and thus Cr(VI) results represent status of the sample at the time of testing.



Unless otherwise agreed in writing, this document is issued by the Company subject to its General Conditions of Service printed overleaf, available on request or accessible at <https://www.sgs.com/en/Terms-and-Conditions>. Attention is drawn to the limitation of liability, indemnification and jurisdiction issues defined therein. Any holder of this document is advised that information contained hereon reflects the Company's findings at the time of its intervention only and within the limits of Client's instructions, if any. The Company's sole responsibility is to its Client and this document does not exonerate parties to a transaction from exercising all their rights and obligations under the transaction documents. This document cannot be reproduced except in full, without prior written approval of the Company. Any unauthorized alteration, forgery or falsification of the content or appearance of this document is unlawful and offenders may be prosecuted to the fullest extent of the law. Unless otherwise stated the results shown in this test report refer only to the sample(s) tested.  
**Attention: To check the authenticity of testing /inspection report & certificate, please contact us at telephone: (86-755) 8307 1443, or email: CN.Doccheck@sgs.com**

(4) Restricted substances and maximum concentration values tolerated by weight in homogeneous materials under RoHS Directive: Cd: 0.01%, Pb/Hg/Cr(VI)/PBB/PBDE/DEHP/BBP/DBP/DIBP: 0.1%. The limit is quoted from RoHS Directive (EU) 2015/863.

(5) IEC 62321 series is equivalent to EN 62321 series.

(6) \* = Considering insufficient sample amount, the report limit (RL) is raised appropriately.

(7) Component(s)/ materials(s) with an area of less than 2 mm x 2 mm (except solder) will not be selected for testing according to RoHS Directive 2011/65/EU due to technical reason.

The location of performance of the laboratory activities: A. No.198, Kezhu Road, Science City, Economic & Technological Development Area, Guangzhou, Guangdong; B. Room 101, Building 3, No.1501, Kaichuang Avenue, Huangpu District, Guangzhou, Guangdong

Unless otherwise stated, the decision rule for conformity reporting is based on Binary Statement for Simple Acceptance Rule ( $w=0$ ) stated in ILAC-G8:09/2019.



Unless otherwise agreed in writing, this document is issued by the Company subject to its General Conditions of Service printed overleaf, available on request or accessible at <https://www.sgs.com/en/Terms-and-Conditions>. Attention is drawn to the limitation of liability, indemnification and jurisdiction issues defined therein. Any holder of this document is advised that information contained hereon reflects the Company's findings at the time of its intervention only and within the limits of Client's instructions, if any. The Company's sole responsibility is to its Client and this document does not exonerate parties to a transaction from exercising all their rights and obligations under the transaction documents. This document cannot be reproduced except in full, without prior written approval of the Company. Any unauthorized alteration, forgery or falsification of the content or appearance of this document is unlawful and offenders may be prosecuted to the fullest extent of the law. Unless otherwise stated the results shown in this test report refer only to the sample(s) tested.  
**Attention: To check the authenticity of testing /inspection report & certificate, please contact us at telephone: (86-755) 8307 1443, or email: CN.Doccheck@sgs.com**

SGS-CSTC Standards Technical Services Co., Ltd.  
Guangzhou Branch, Technical Services Laboratory

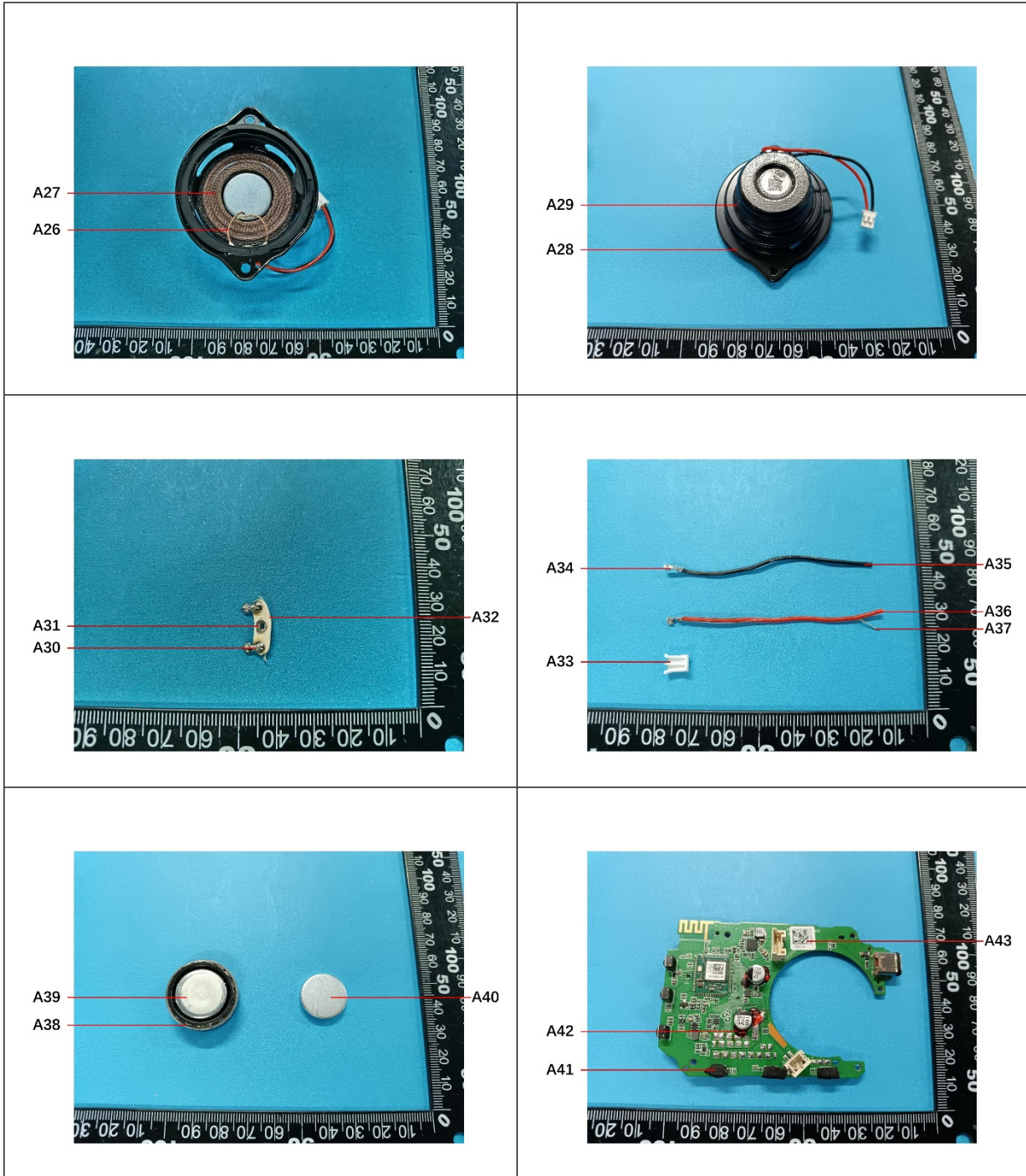
No.198, Kezhu Road, Science City, Economic & Technological Development Area, Guangzhou, Guangdong, China 510663  
中国·广东·广州高新技术产业开发区科学城科珠路198号 邮编: 510663

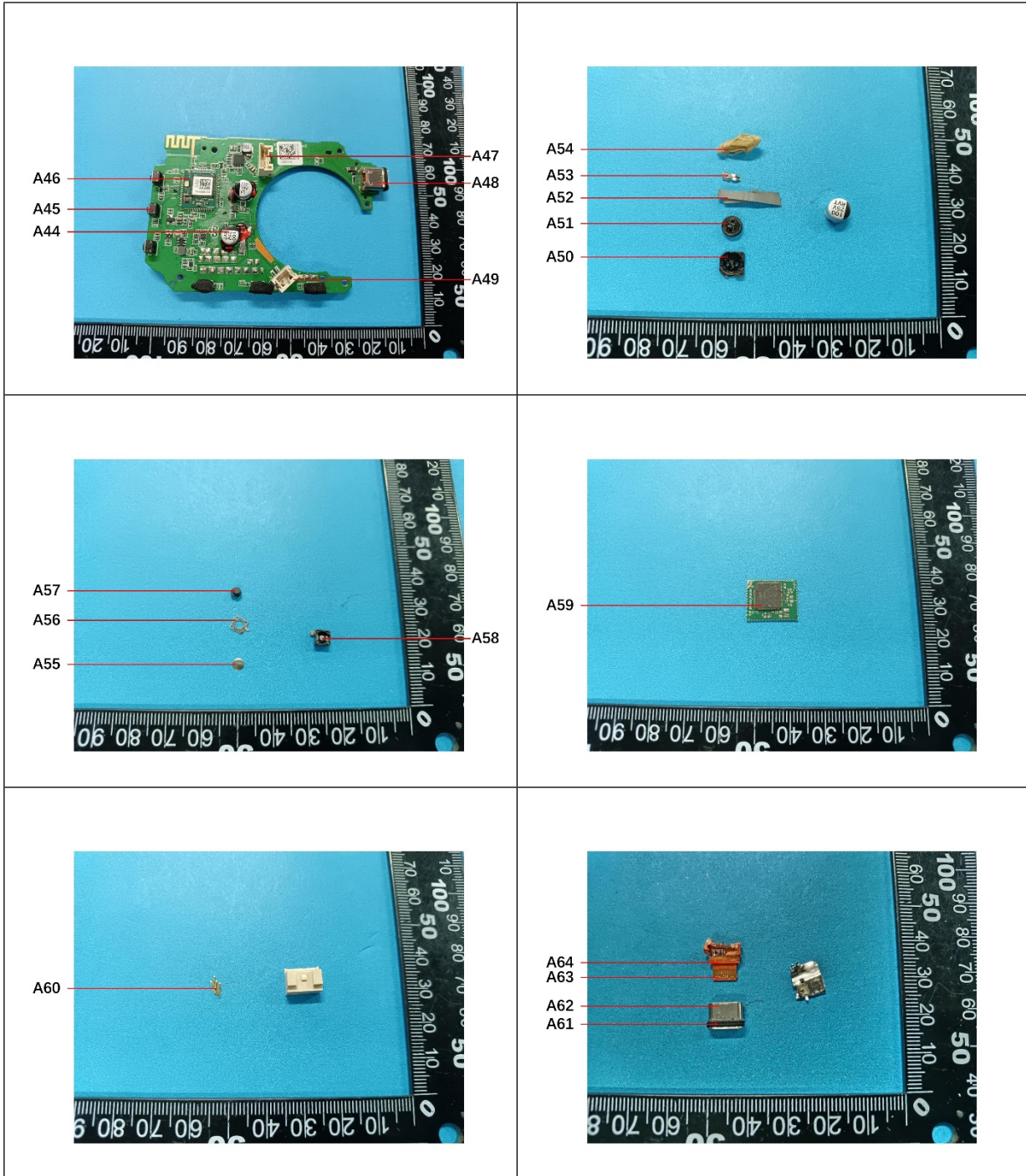
t (86-20) 82155555 www.sgsgroup.com.cn  
t (86-20) 82155555 sgs.china@sgs.com

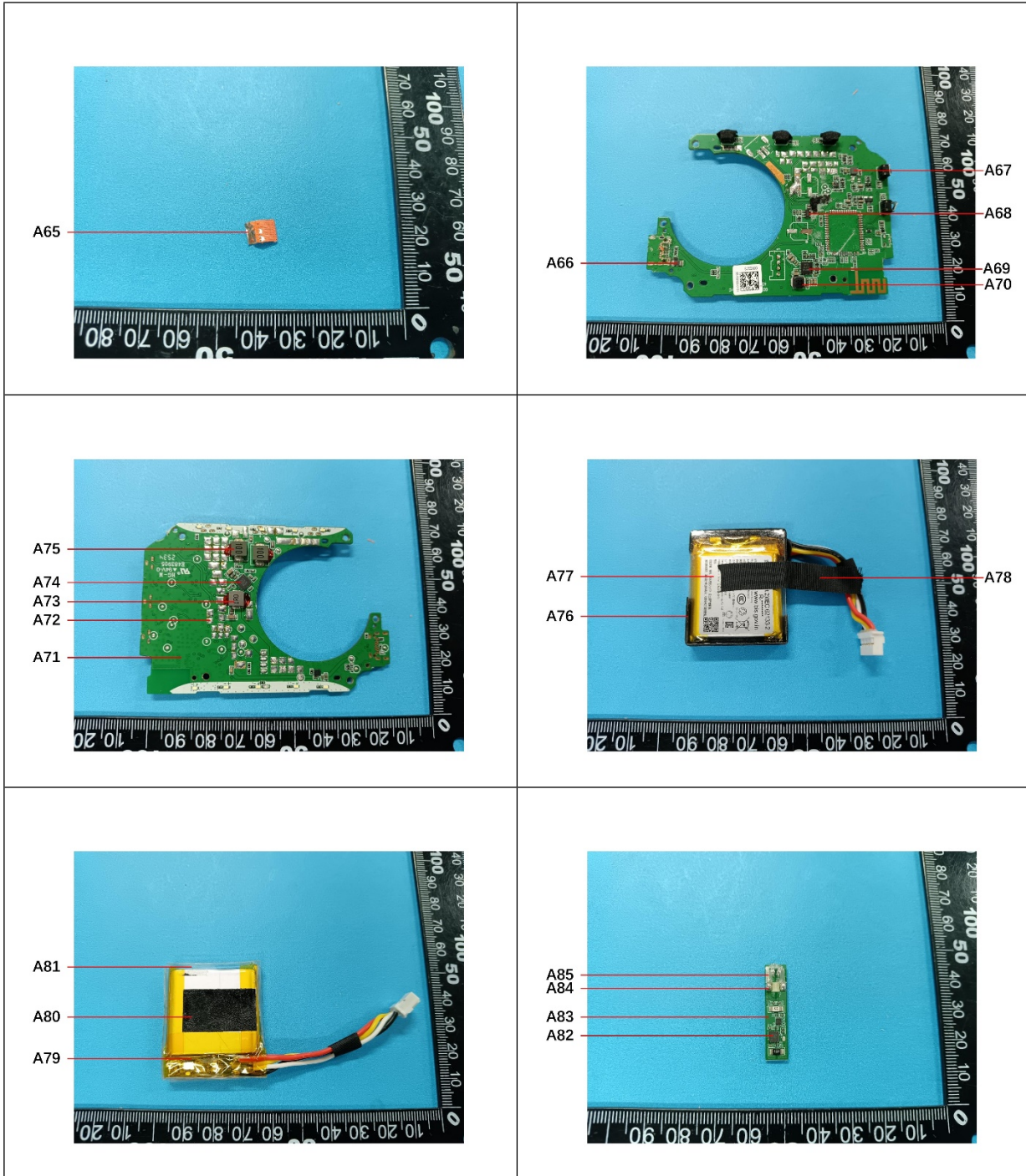
Sample photos:

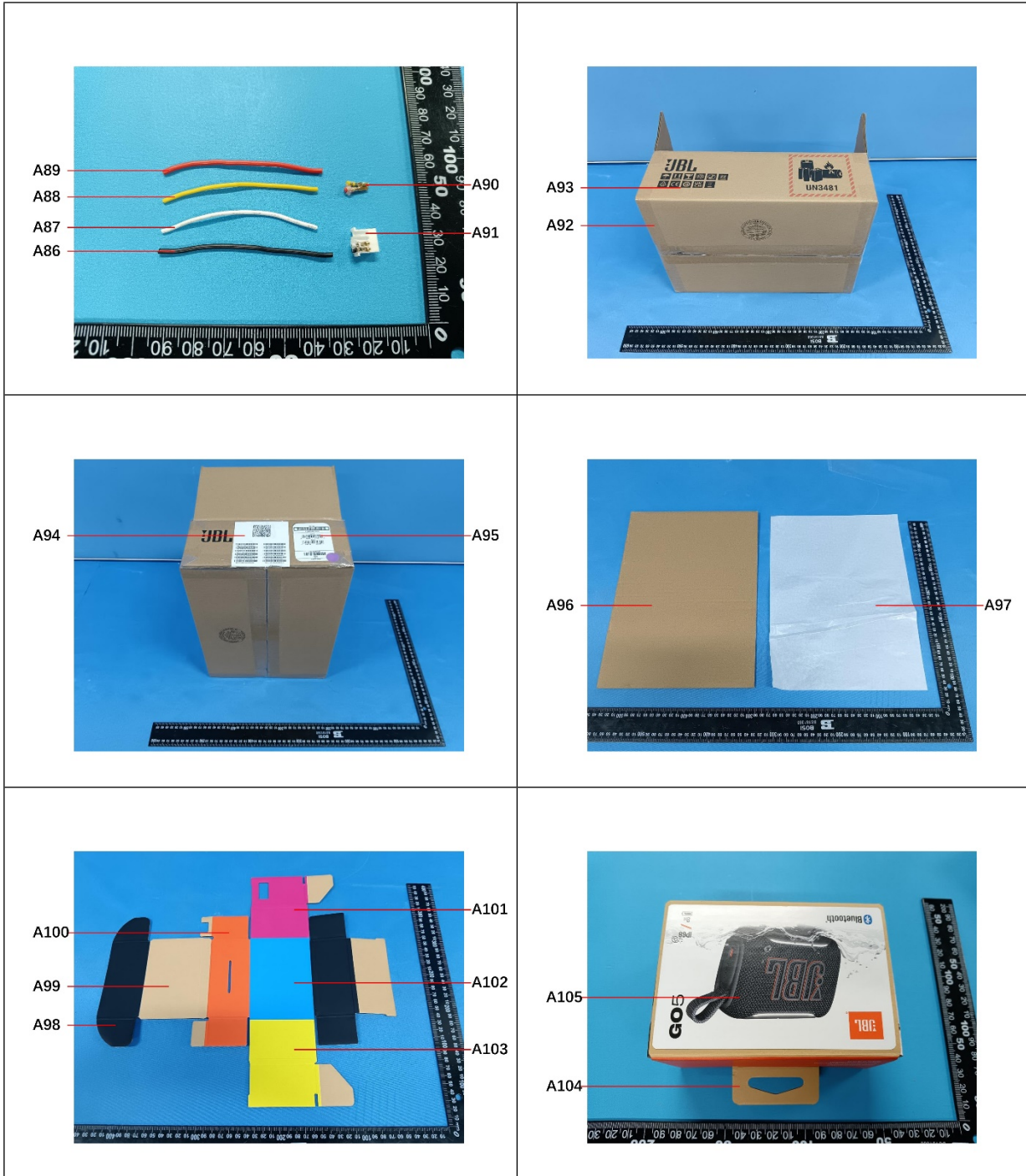


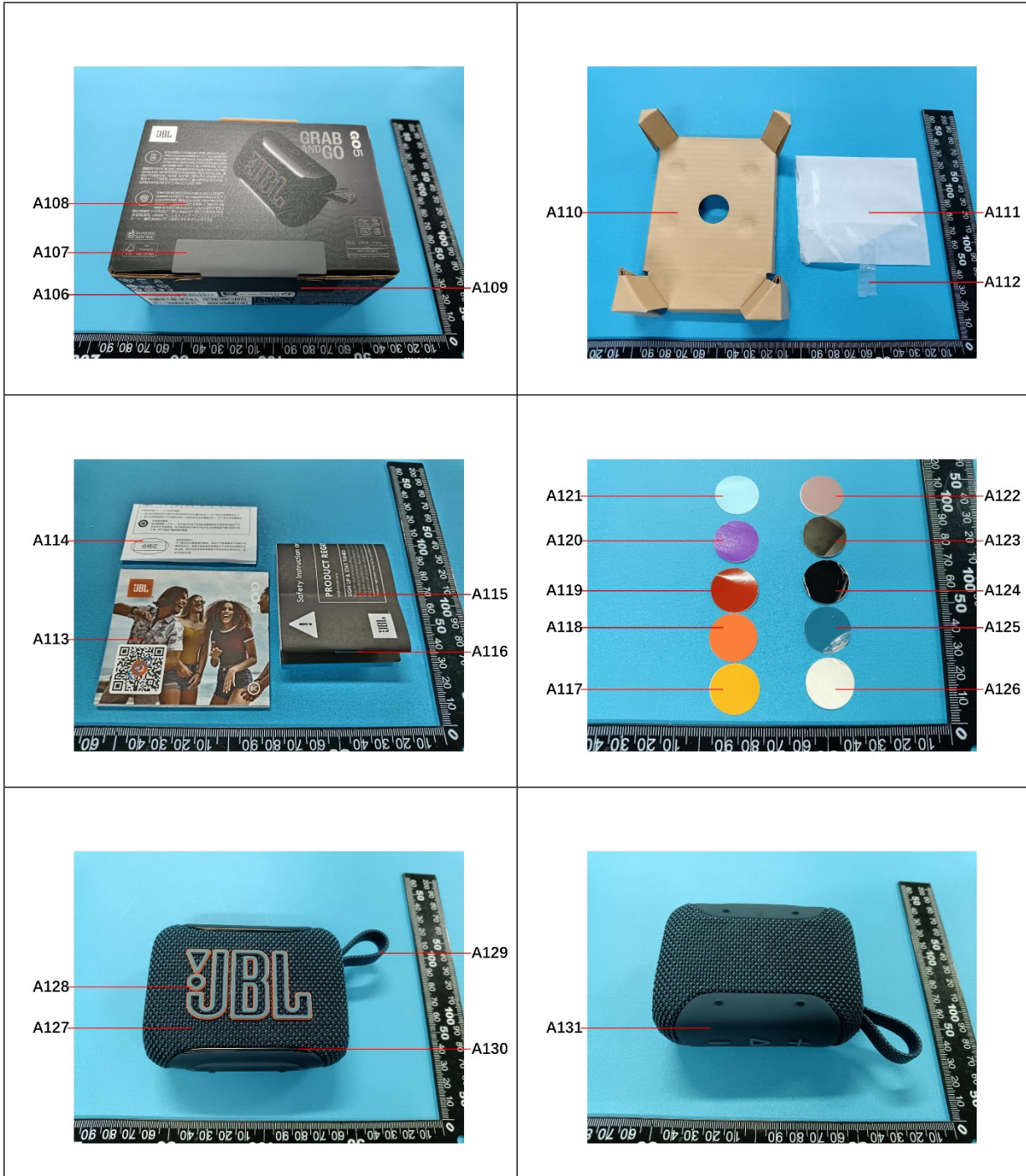




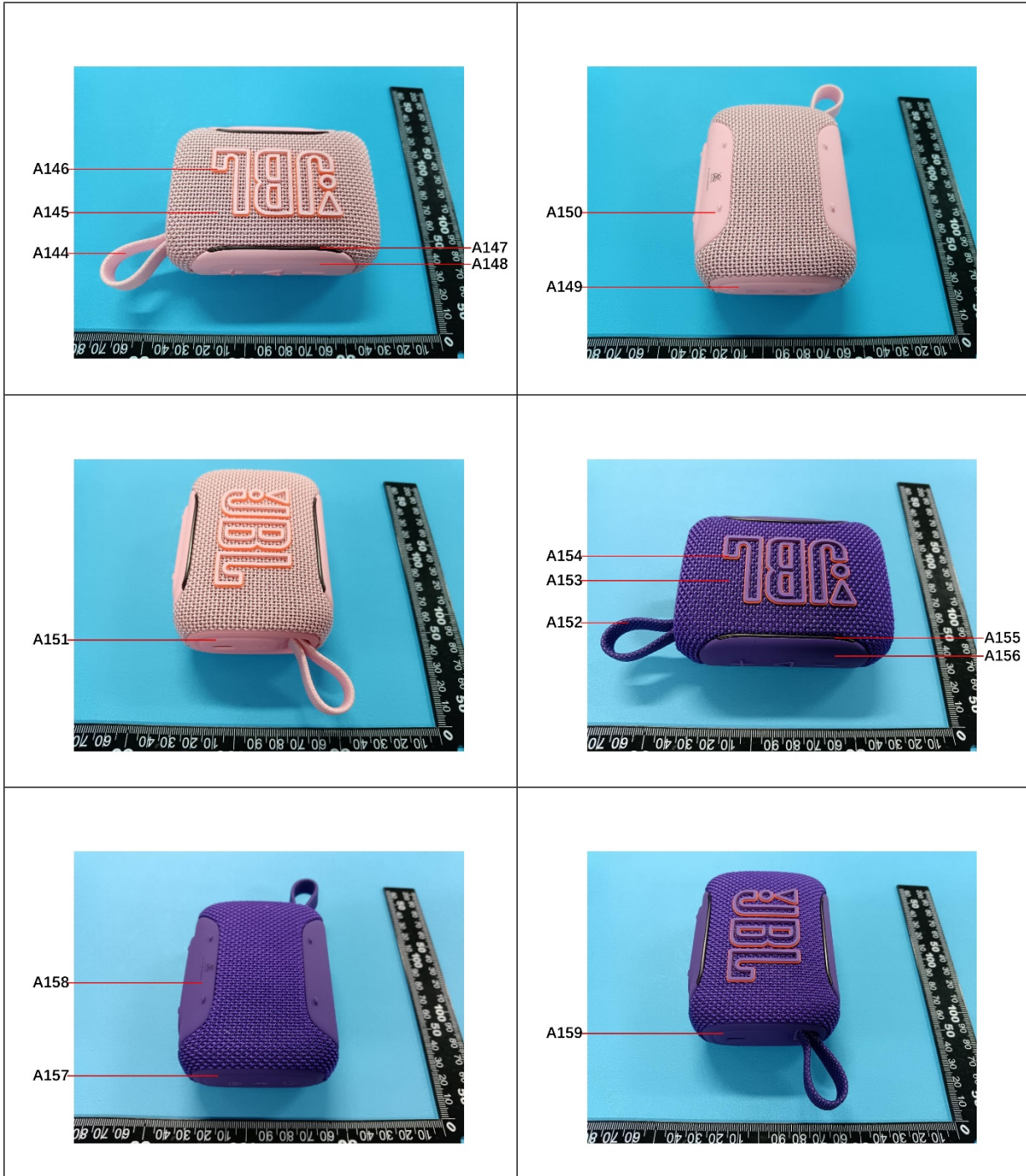


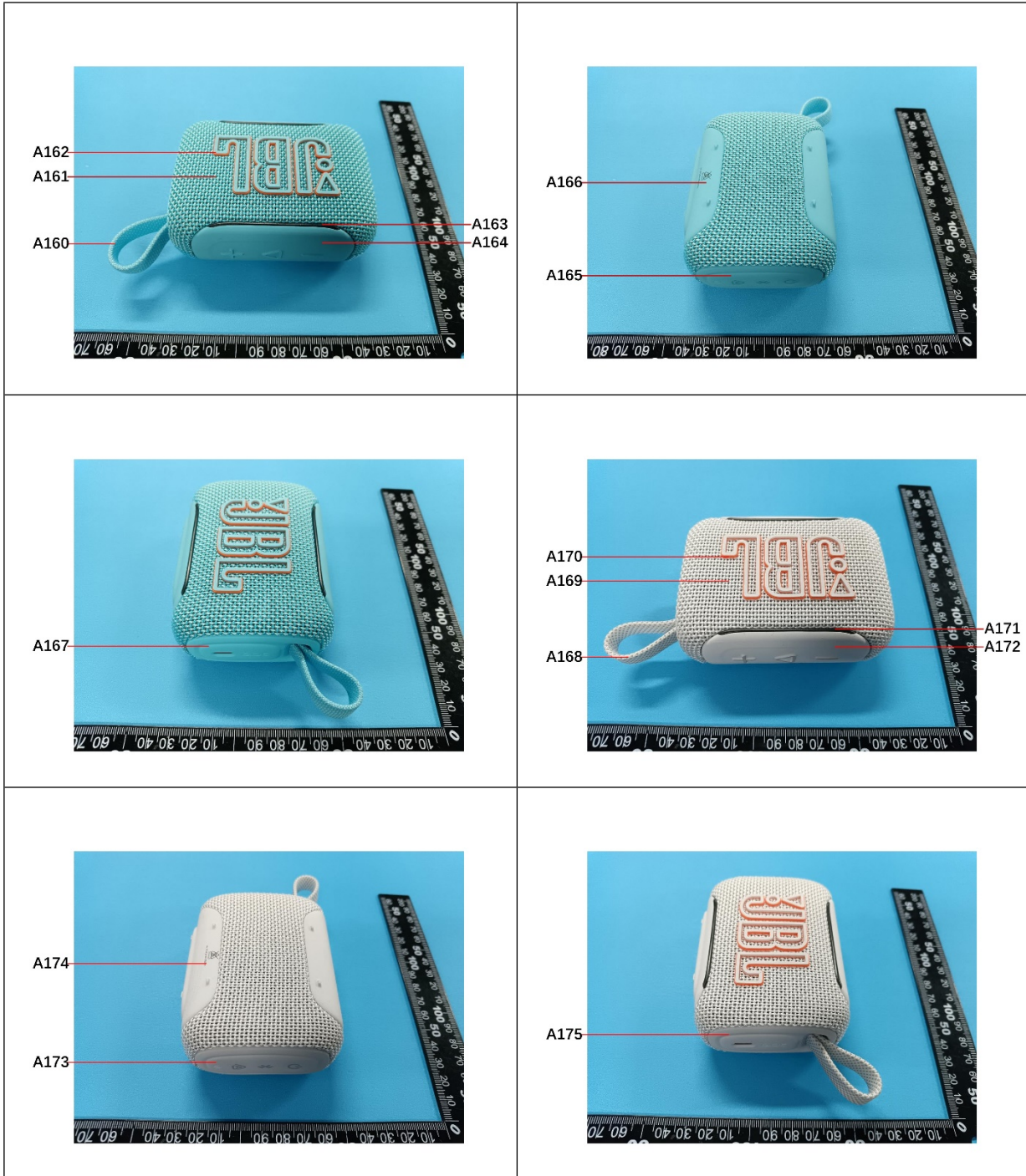






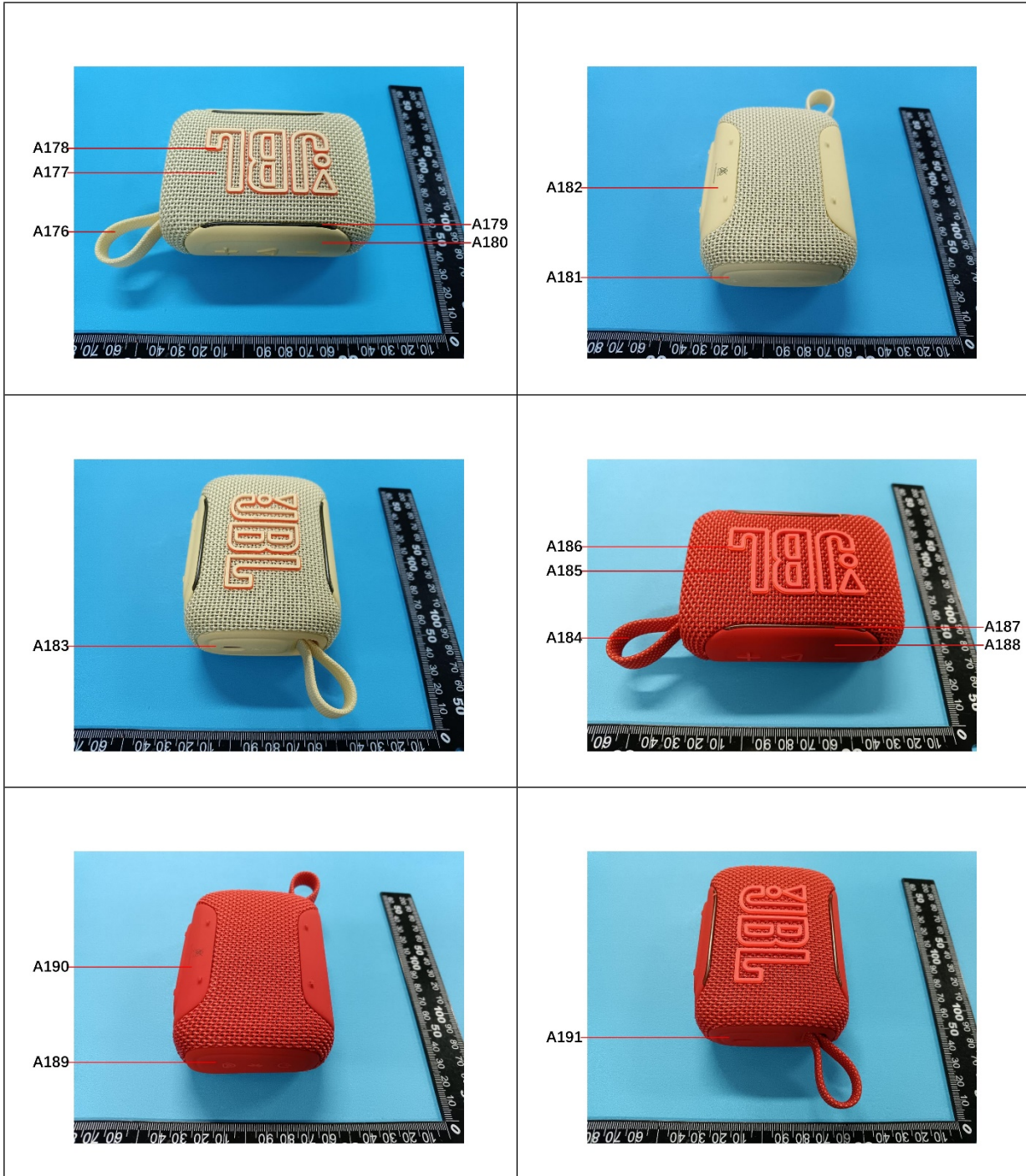


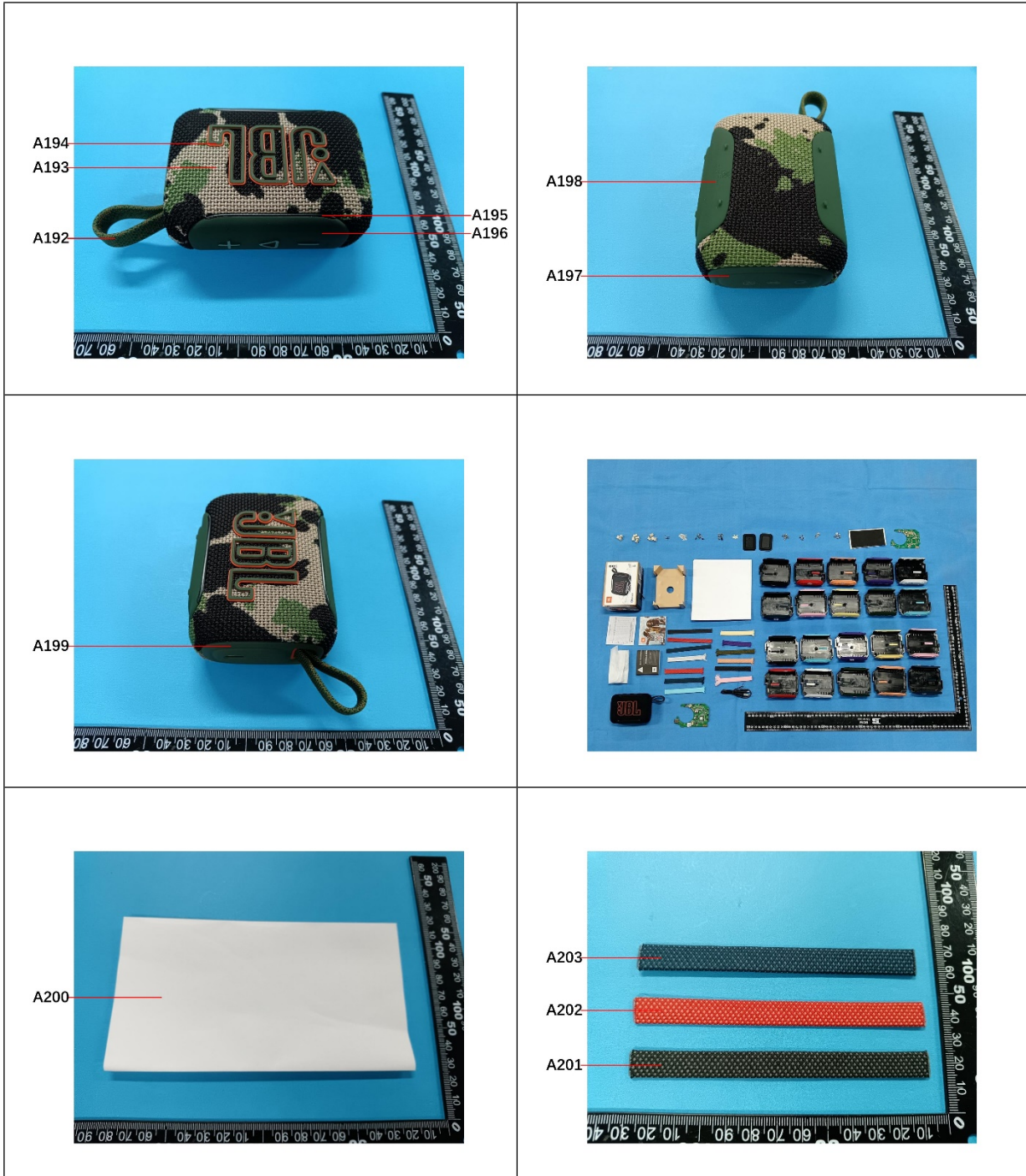




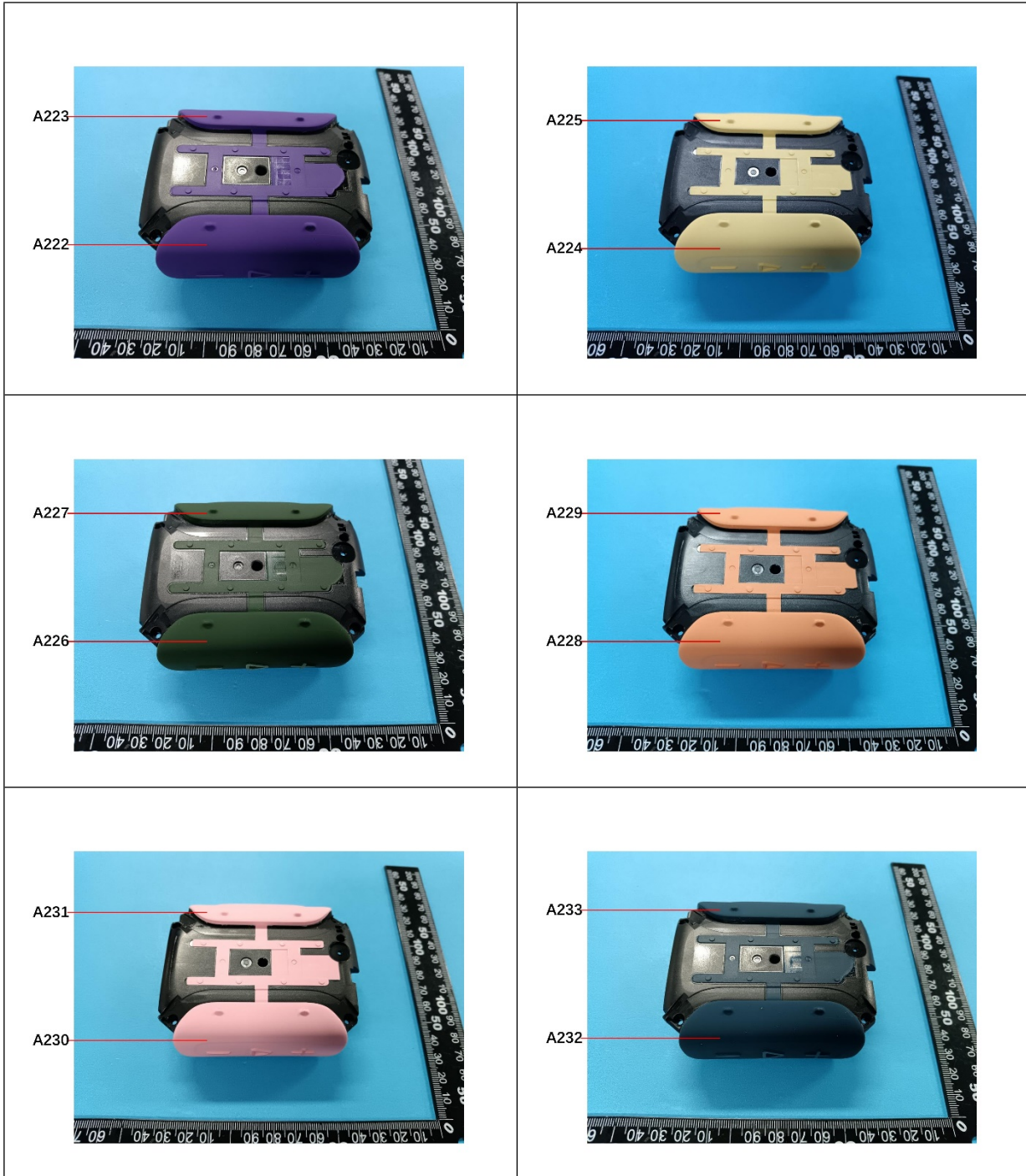
Unless otherwise agreed in writing, this document is issued by the Company subject to its General Conditions of Service printed overleaf, available on request or accessible at <https://www.sgs.com/en/Terms-and-Conditions>. Attention is drawn to the limitation of liability, indemnification and jurisdiction issues defined therein. Any holder of this document is advised that information contained herein reflects the Company's findings at the time of its intervention only and within the limits of Client's instructions, if any. The Company's sole responsibility is to its Client and this document does not exonerate parties to a transaction from exercising all their rights and obligations under the transaction documents. This document cannot be reproduced except in full, without prior written approval of the Company. Any unauthorized alteration, forgery or falsification of the content or appearance of this document is unlawful and offenders may be prosecuted to the fullest extent of the law. Unless otherwise stated the results shown in this test report refer only to the sample(s) tested.

Attention: To check the authenticity of testing / inspection report & certificate, please contact us at telephone: (86-755) 8307 1443, or email: [CN.Doccheck@sgs.com](mailto:CN.Doccheck@sgs.com)

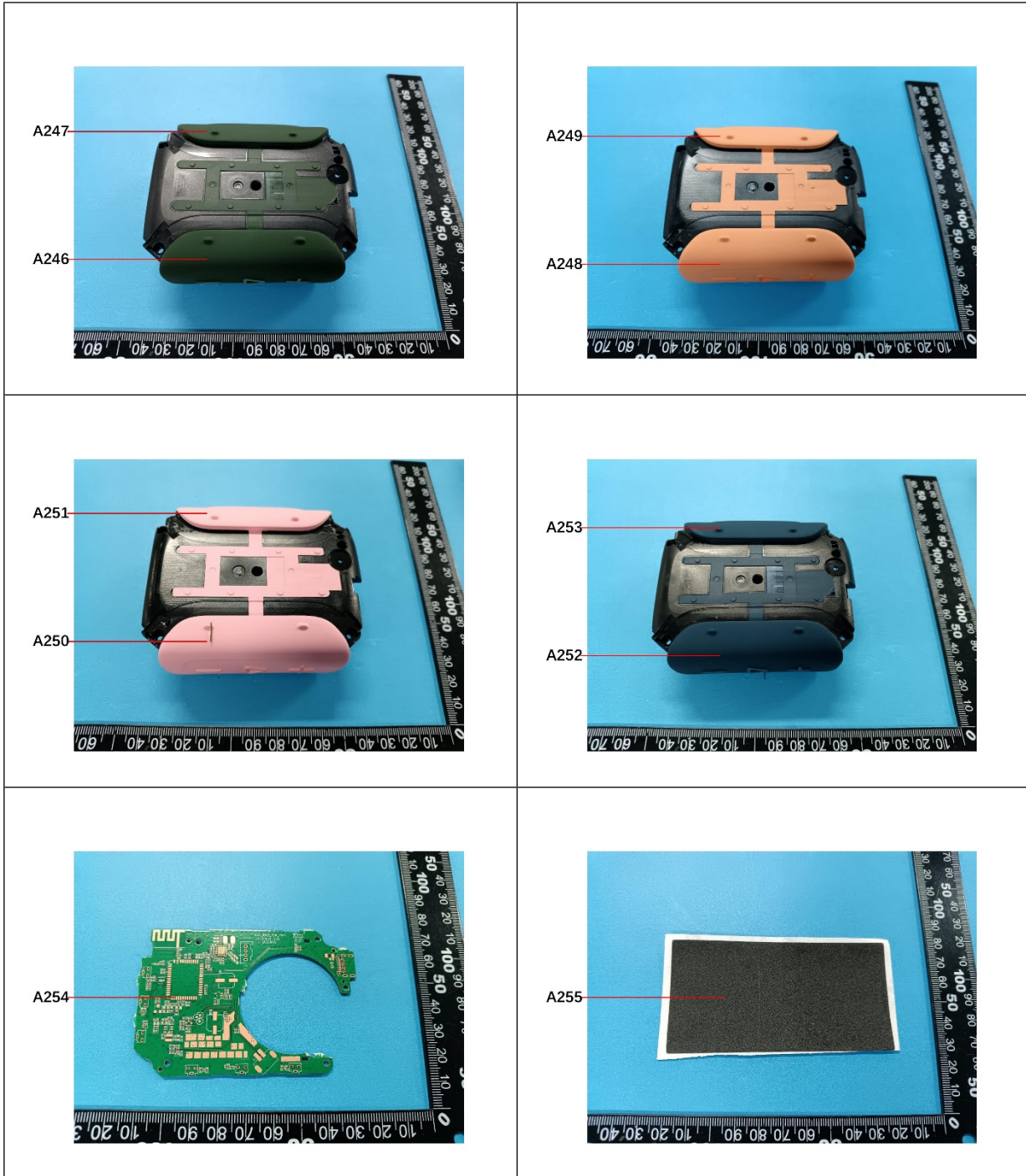


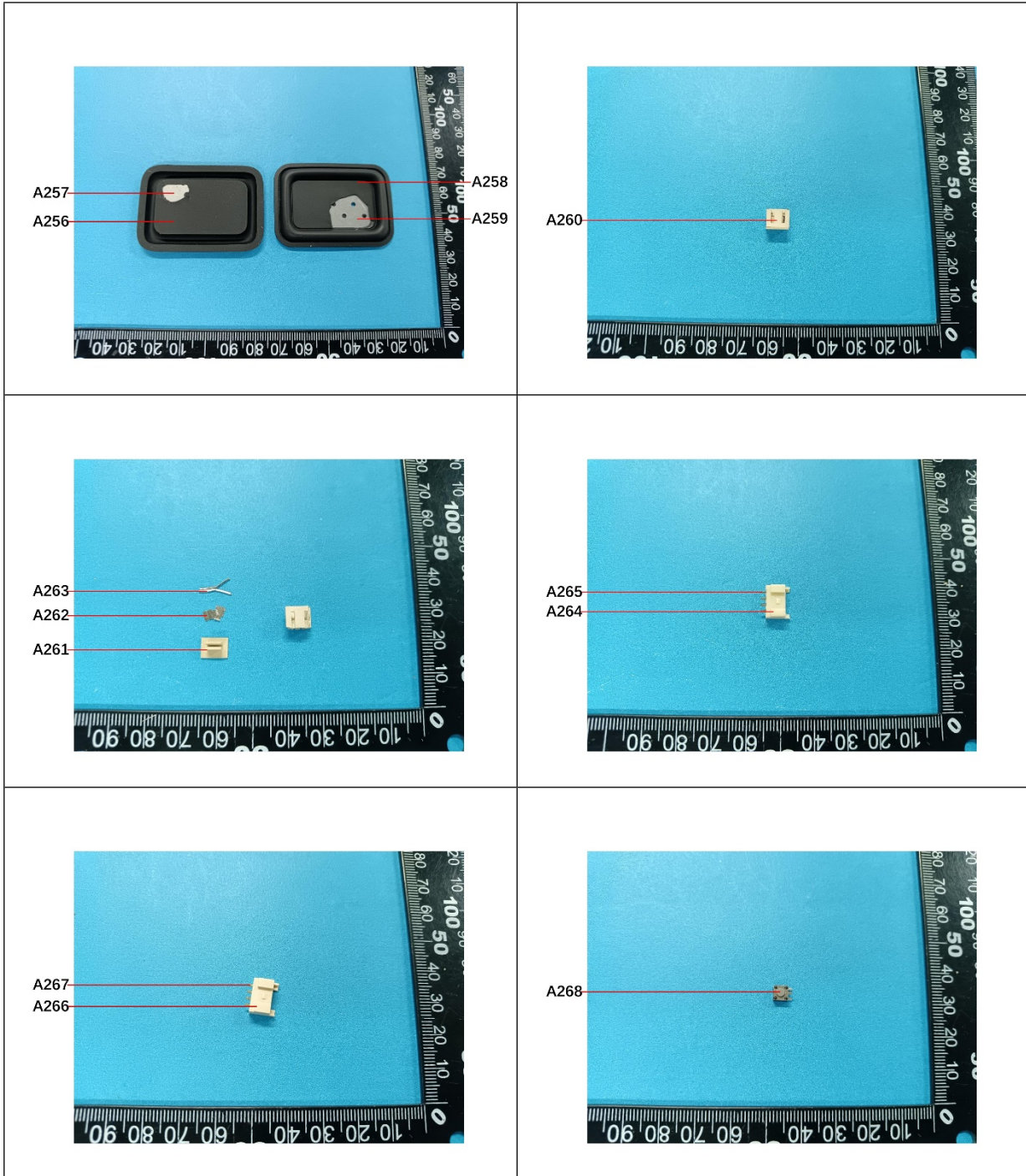


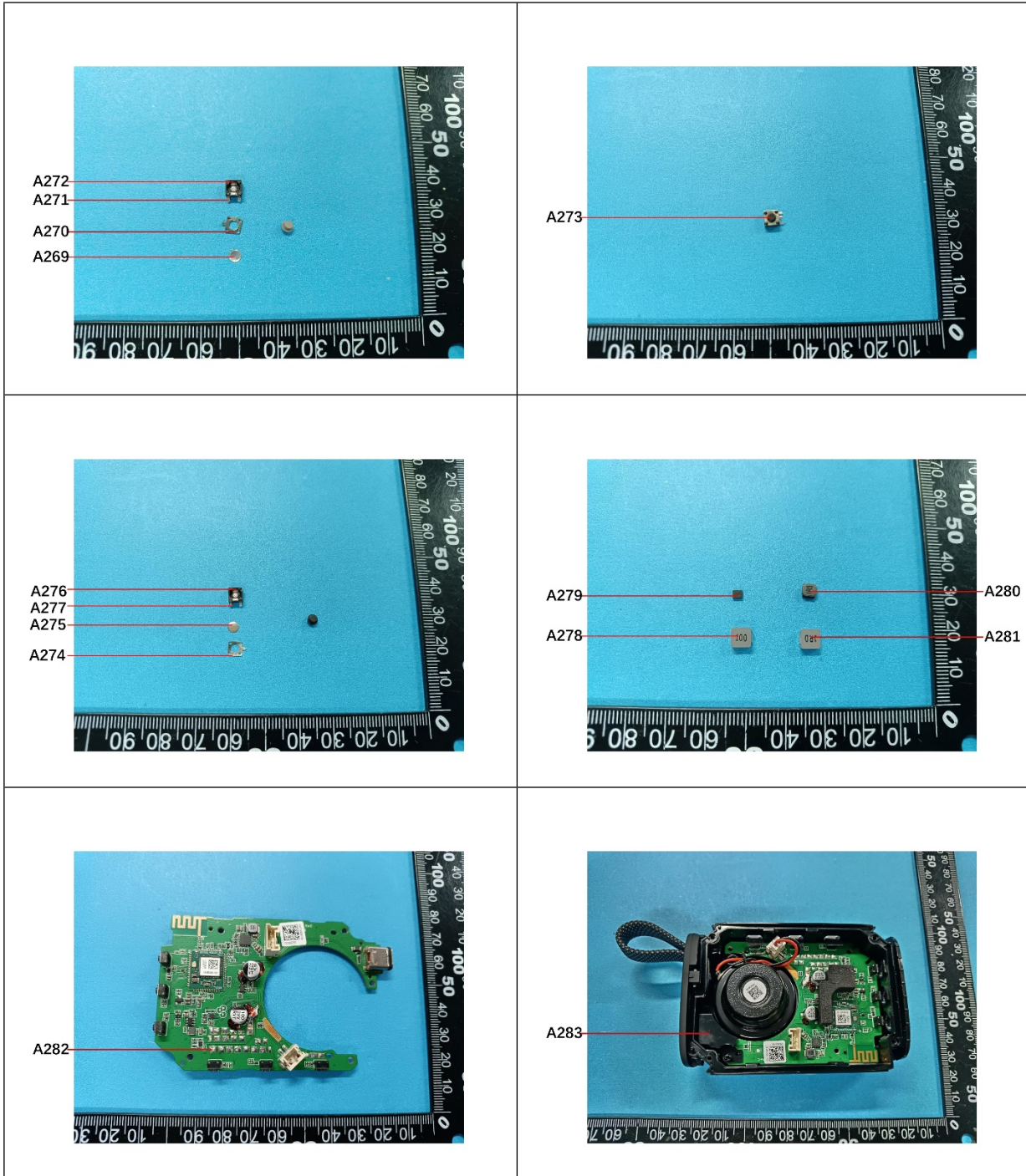


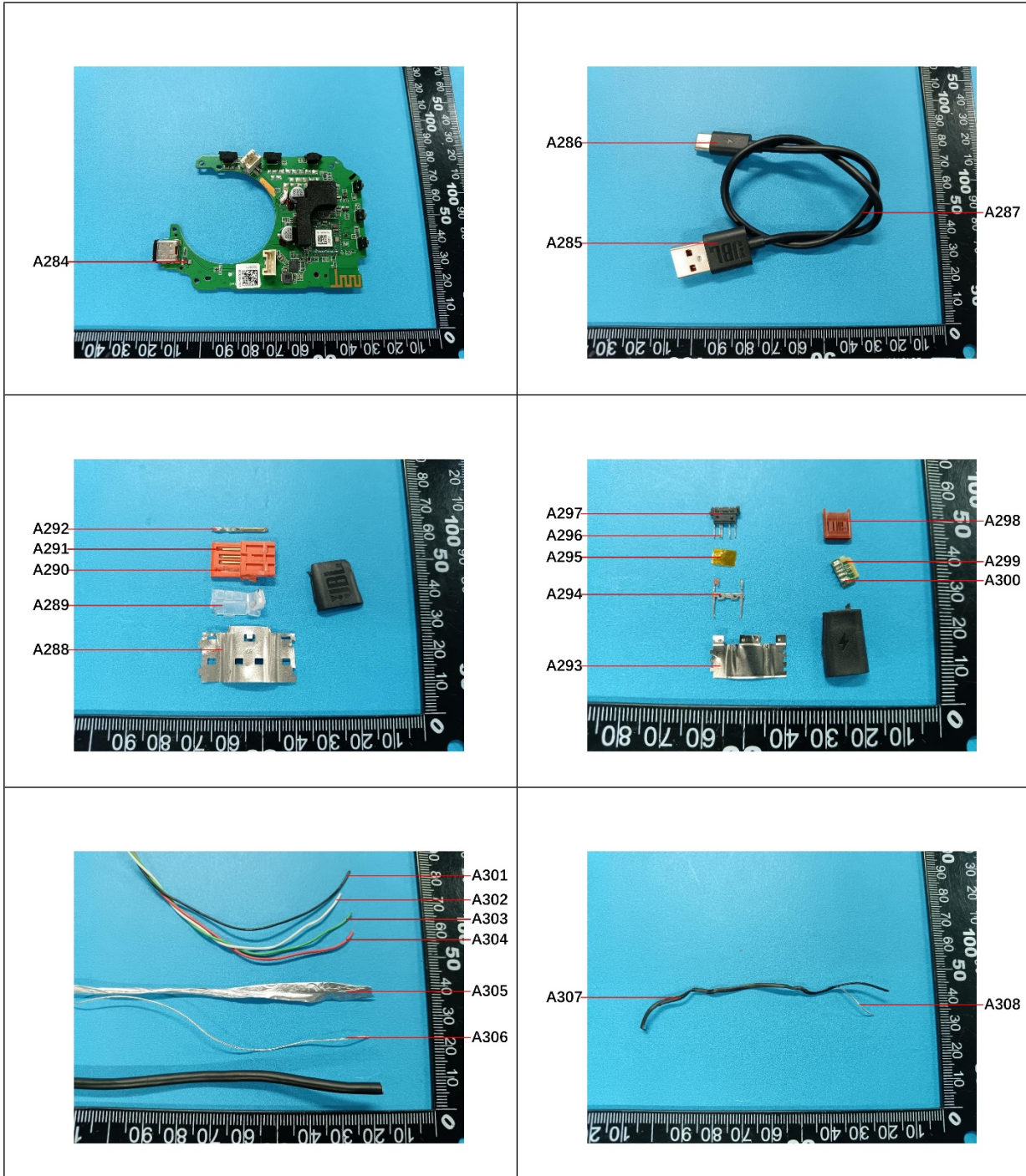


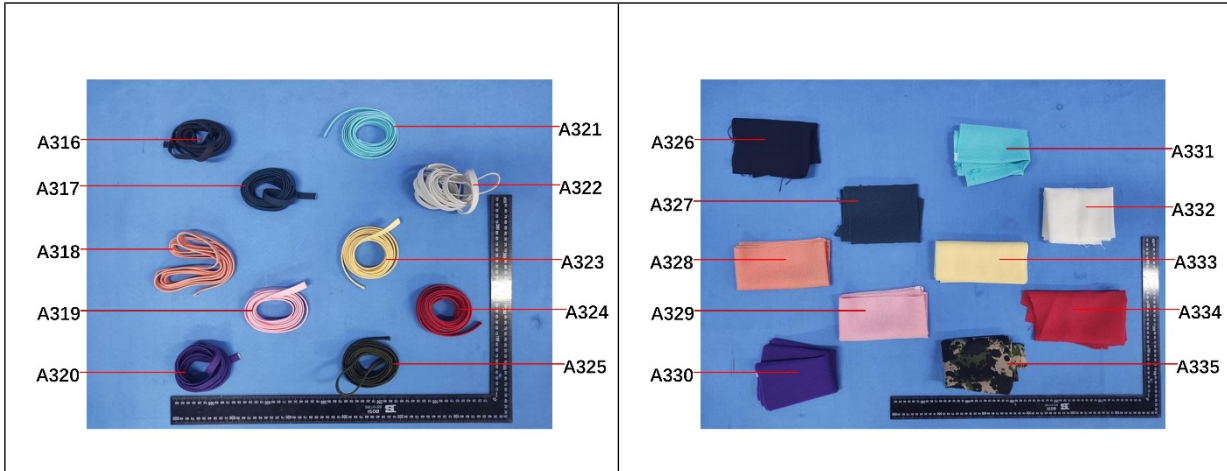












SGS authenticate the photo on original report only  
 \*\*\* End of Report \*\*\*



SGS-CSTC Standards Technical Services Co., Ltd.  
 Guangzhou Branch Technical Laboratory

Unless otherwise agreed in writing, this document is issued by the Company subject to its General Conditions of Service printed overleaf, available on request or accessible at <https://www.sgs.com/en/Terms-and-Conditions>. Attention is drawn to the limitation of liability, indemnification and jurisdiction issues defined therein. Any holder of this document is advised that information contained hereon reflects the Company's findings at the time of its intervention only and within the limits of Client's instructions, if any. The Company's sole responsibility is to its Client and this document does not exonerate parties to a transaction from exercising all their rights and obligations under the transaction documents. This document cannot be reproduced except in full, without prior written approval of the Company. Any unauthorized alteration, forgery or falsification of the content or appearance of this document is unlawful and offenders may be prosecuted to the fullest extent of the law. Unless otherwise stated the results shown in this test report refer only to the sample(s) tested.  
**Attention: To check the authenticity of testing /inspection report & certificate, please contact us at telephone: (86-755) 8307 1443, or email: CN.Doccheck@sgs.com**

No.198, Kezhu Road, Science City, Economic & Technological Development Area, Guangzhou, Guangdong, China 510663  
 中国·广东·广州高新技术产业开发区科学城科珠路198号 邮编: 510663

t (86-20) 82155555 www.sgsgroup.com.cn  
 t (86-20) 82155555 sgs.china@sgs.com