

Client Name: HARMAN INTERNATIONAL INDUSTRIES, INCORPORATED
 Client Address: 8500 BALBOA BLVD, NORTHRIDGE, CA 91329, UNITED STATES

Sample Name: PORTABLE BLUETOOTH SPEAKER
 Tested Basic Model No.: TUNER 3
 Manufacturer: HARMAN INTERNATIONAL INDUSTRIES, INCORPORATED
 Manufacturer Address: 8500 BALBOA BLVD, NORTHRIDGE, CA 91329, UNITED STATES
 Supplier: Dehuida Viet Nam Technology Co., Ltd
 Brand: JBL

The above sample(s) and information were provided by the client.

SGS Job No.: SZP25-006977
 Sample Receiving Date: Apr 01, 2025
 Verification Period: Apr 01, 2025 ~ Apr 21, 2025
 Verification Requested: With reference to RoHS Directive (EU) 2015/863 amending 2011/65/EU.
 Verification Method(s): Please refer to next page(s).
 Verification Result(s): Please refer to next page(s).

Test Result Summary:

Test Items	Conclusion
EU RoHS Directive (EU) 2015/863 amending Annex II to Directive 2011/65/EU - Lead, Mercury, Cadmium, Hexavalent chromium, Polybrominated biphenyls (PBB), Polybrominated diphenyl ethers (PBDE), Bis(2-ethylhexyl) phthalate (DEHP), Butyl benzyl phthalate (BBP), Dibutyl phthalate (DBP) and Diisobutyl phthalate (DIBP)	Pass

Signed for and on behalf of
 SGS-CSTC Standards Technical Services Co., Ltd. Guangzhou Branch



Catty Gong
 Approved Signatory

Scan to see the report



OAE9722B



Unless otherwise agreed in writing, this document is issued by the Company subject to its General Conditions of Service printed overleaf, available on request or accessible at <https://www.sgs.com/en/Terms-and-Conditions>. Attention is drawn to the limitation of liability, indemnification and jurisdiction issues defined therein. Any holder of this document is advised that information contained hereon reflects the Company's findings at the time of its intervention only and within the limits of Client's instructions, if any. The Company's sole responsibility is to its Client and this document does not exonerate parties to a transaction from exercising all their rights and obligations under the transaction documents. This document cannot be reproduced except in full, without prior written approval of the Company. Any unauthorized alteration, forgery or falsification of the content or appearance of this document is unlawful and offenders may be prosecuted to the fullest extent of the law. Unless otherwise stated the results shown in this test report refer only to the sample(s) tested.
Attention: To check the authenticity of testing /inspection report & certificate, please contact us at telephone: (86-755) 8307 1443, or email: CN.Doccheck@sgs.com

Verification Method(s):

1. With reference to IEC 62321-2:2021, disassembly and disjointment were performed for the submitted samples.
2. With reference to IEC 62321-1:2013, tests were performed for the samples indicated by the photos in this report.
 - (1) With reference to IEC 62321-3-1:2013, screening by EDXRF spectroscopy.
 - (2) Wet chemical test method: With reference to IEC 62321-4:2013+A1:2017, IEC62321-5:2013, IEC 62321-7-1:2015, IEC 62321-7-2:2017, IEC 62321-12:2023, IEC 62321-6:2015 and IEC62321-8:2017 , analyzed by ICP-OES,UV-Vis and GC-MS.



SGS-CSTC Standards Technical Services Co., Ltd.
Guangzhou Branch, Technical Services Laboratory

Unless otherwise agreed in writing, this document is issued by the Company subject to its General Conditions of Service printed overleaf, available on request or accessible at <https://www.sgs.com/en/Terms-and-Conditions>. Attention is drawn to the limitation of liability, indemnification and jurisdiction issues defined therein. Any holder of this document is advised that information contained hereon reflects the Company's findings at the time of its intervention only and within the limits of Client's instructions, if any. The Company's sole responsibility is to its Client and this document does not exonerate parties to a transaction from exercising all their rights and obligations under the transaction documents. This document cannot be reproduced except in full, without prior written approval of the Company. Any unauthorized alteration, forgery or falsification of the content or appearance of this document is unlawful and offenders may be prosecuted to the fullest extent of the law. Unless otherwise stated the results shown in this test report refer only to the sample(s) tested.
Attention: To check the authenticity of testing /inspection report & certificate, please contact us at telephone: (86-755) 8307 1443, or email: CN.Doccheck@sgs.com

No.198, Kezhu Road, Science City, Economic & Technological Development Area, Guangzhou, Guangdong, China 510663
中国·广东·广州高新技术产业开发区科学城科珠路198号 邮编: 510663

t (86-20) 82155555 www.sgs.com.cn
t (86-20) 82155555 sgs.china@sgs.com

Verification Part Description:

SN ID	Sample No.	SGS Sample ID	Description
SN1	A1	CAN25-0069643-0001.C001	Green "PCB"
SN2	A2	CAN25-0069643-0001.C002	Black plastic part
SN3	A3	CAN25-0069643-0001.C003	Dark grey plastic part
SN4	A4	CAN25-0069643-0001.C004	Silvery metal pin
SN5	A5	CAN25-0069643-0001.C005	Silvery metal part
SN6	A6	CAN25-0069643-0001.C006	Black plastic shell
SN7	A7	CAN25-0069643-0001.C007	Green "PCB"
SN8	A8	CAN25-0069643-0001.C008	Black body
SN9	A9	CAN25-0069643-0001.C009	White adhesive plastic sheet with black printing
SN10	A10	CAN25-0069643-0001.C010	Red glue
SN11	A11	CAN25-0069643-0001.C011	Dark grey plastic part
SN12	A12	CAN25-0069643-0001.C012	Beige plastic part
SN13	A13	CAN25-0069643-0001.C013	Black plastic sheet
SN14	A14	CAN25-0069643-0001.C014	Black rubber cover
SN15	A15	CAN25-0069643-0001.C015	Silvery metal pin
SN16	A16	CAN25-0069643-0001.C016	Silvery metal sheet
SN17	A17	CAN25-0069643-0001.C017	Silvery metal pin
SN18	A18	CAN25-0069643-0001.C018	Green "PCB"
SN19	A19	CAN25-0069643-0001.C019	Silvery metal solder
SN20	A20	CAN25-0069643-0001.C020	Beige plastic part
SN21	A21	CAN25-0069643-0001.C021	Green "PCB"
SN22	A22	CAN25-0069643-0001.C022	Silvery metal solder
SN23	A23	CAN25-0069643-0001.C023	Green surfaced core
SN24	A24	CAN25-0069643-0001.C024	Golden/silvery metal pin
SN25	A25	CAN25-0069643-0001.C025	Red plastic part
SN26	A26	CAN25-0069643-0001.C026	Green "PCB"
SN27	A27	CAN25-0069643-0001.C027	Silvery metal solder
SN28	A28	CAN25-0069643-0001.C028	Multicolor paper sheet
SN29	A29	CAN25-0069643-0001.C029	White paper sheet
SN30	A30	CAN25-0069643-0001.C030	Brown paper sheet
SN31	A31	CAN25-0069643-0001.C031	White paper sheet with multicolor printing
SN32	A32	CAN25-0069643-0001.C032	White paper sheet with black printing
SN33	A33	CAN25-0069643-0001.C033	White paper sheet with black printing
SN34	A34	CAN25-0069643-0001.C034	Silvery metal part
SN35	A35	CAN25-0069643-0001.C035	Transparent adhesive plastic sheet
SN36	A36	CAN25-0069643-0001.C036	White adhesive plastic sheet with black printing
SN37	A37	CAN25-0069643-0001.C037	White adhesive plastic sheet with black printing
SN38	A38	CAN25-0069643-0001.C038	White adhesive paper sheet
SN39	A39	CAN25-0069643-0001.C039	Black adhesive paper sheet
SN40	A40	CAN25-0069643-0001.C040	Brown paper sheet
SN41	A41	CAN25-0069643-0001.C041	Transparent adhesive plastic sheet
SN42	A42	CAN25-0069643-0001.C042	Black material
SN43	A43	CAN25-0069643-0001.C043	Brown paper sheet with multicolor printing



Unless otherwise agreed in writing, this document is issued by the Company subject to its General Conditions of Service printed overleaf, available on request or accessible at <https://www.sgs.com/en/Terms-and-Conditions>. Attention is drawn to the limitation of liability, indemnification and jurisdiction issues defined therein. Any holder of this document is advised that information contained herein reflects the Company's findings at the time of its intervention only and within the limits of Client's instructions, if any. The Company's sole responsibility is to its Client and this document does not exonerate parties to a transaction from exercising all their rights and obligations under the transaction documents. This document cannot be reproduced except in full, without prior written approval of the Company. Any unauthorized alteration, forgery or falsification of the content or appearance of this document is unlawful and offenders may be prosecuted to the fullest extent of the law. Unless otherwise stated the results shown in this test report refer only to the sample(s) tested.
Attention: To check the authenticity of testing/inspection report & certificate, please contact us at telephone: (86-755) 8307 1443, or email: CN.Doccheck@sgs.com

Verification Result(s):

In accordance with the result of material risk assessment, the following disjointed parts in the submitted sample have been verified. (Unless otherwise specified, the unit is mg/kg).

Test Item(s)	A1	A2	A3	A4	A5	A6	A7	A8
Pb	BL	BL	BL	BL	BL	BL	BL	OL▲
Hg	BL	BL	BL	BL	BL	BL	BL	BL
Cd	BL	BL	BL	BL	BL	BL	BL	BL
Cr(VI)▼	BL	BL	BL	ND	BL	BL	BL	BL
PBB	ND	BL	BL	---	---	BL	ND	BL
PBDE	ND	BL	BL	---	---	BL	ND	BL
DEHP	ND	BL	BL	---	---	BL	ND	ND
BBP	ND	BL	BL	---	---	BL	ND	ND
DBP	ND	BL	BL	---	---	BL	ND	ND
DIBP	ND	BL	BL	---	---	BL	ND	ND
Conclusion	PASS	PASS	PASS	PASS	PASS	PASS	PASS	PASS

Test Item(s)	A9	A10	A11	A12	A13	A14	A15	A16
Pb	BL	BL	BL	BL	BL	BL	BL	BL
Hg	BL	BL	BL	BL	BL	BL	BL	BL
Cd	BL	BL	BL	BL	BL	BL	BL	BL
Cr(VI)▼	BL	BL	BL	BL	BL	BL	ND	BL
PBB	BL	BL	BL	BL	BL	BL	---	---
PBDE	BL	BL	BL	BL	BL	BL	---	---
DEHP	BL	ND	BL	BL	BL	ND	---	---
BBP	BL	ND	BL	BL	BL	ND	---	---
DBP	BL	ND	BL	BL	BL	ND	---	---
DIBP	BL	ND	BL	BL	BL	ND	---	---
Conclusion	PASS	PASS	PASS	PASS	PASS	PASS	PASS	PASS

Test Item(s)	A17	A18	A19	A20	A21	A22	A23	A24
Pb	BL	BL	BL	BL	BL	BL	BL	BL
Hg	BL	BL	BL	BL	BL	BL	BL	BL
Cd	BL	BL	BL	BL	BL	BL	BL	BL
Cr(VI)▼	BL	BL	BL	BL	BL	BL	BL	BL
PBB	---	ND	---	BL	ND	---	ND	---
PBDE	---	ND	---	BL	ND	---	ND	---
DEHP	---	ND	---	BL	ND	---	ND	---
BBP	---	ND	---	BL	ND	---	ND	---
DBP	---	ND	---	BL	ND	---	ND	---
DIBP	---	ND	---	BL	ND	---	ND	---
Conclusion	PASS	PASS	PASS	PASS	PASS	PASS	PASS	PASS

Test Item(s)	A25	A26	A27	A28	A29	A30	A31	A32
Pb	BL	BL	BL	BL	BL	BL	BL	BL
Hg	BL	BL	BL	BL	BL	BL	BL	BL
Cd	BL	BL	BL	BL	BL	BL	BL	BL
Cr(VI)▼	BL	BL	BL	BL	BL	BL	BL	BL



Unless otherwise agreed in writing, this document is issued by the Company subject to its General Conditions of Service printed overleaf, available on request or accessible at <https://www.sgs.com/en/Terms-and-Conditions>. Attention is drawn to the limitation of liability, indemnification and jurisdiction issues defined therein. Any holder of this document is advised that information contained herein reflects the Company's findings at the time of its intervention only and within the limits of Client's instructions, if any. The Company's sole responsibility is to its Client and this document does not exonerate parties to a transaction from exercising all their rights and obligations under the transaction documents. This document cannot be reproduced except in full, without prior written approval of the Company. Any unauthorized alteration, forgery or falsification of the content or appearance of this document is unlawful and offenders may be prosecuted to the fullest extent of the law. Unless otherwise stated the results shown in this test report refer only to the sample(s) tested.

Attention: To check the authenticity of testing /inspection report & certificate, please contact us at telephone: (86-755) 8307 1443, or email: CN.Doccheck@sgs.com

Test Item(s)	A25	A26	A27	A28	A29	A30	A31	A32
PBB	BL	ND	---	BL	BL	BL	BL	BL
PBDE	BL	ND	---	BL	BL	BL	BL	BL
DEHP	BL	ND	---	BL	BL	BL	BL	BL
BBP	BL	ND	---	BL	BL	BL	BL	BL
DBP	BL	ND	---	BL	BL	BL	BL	BL
DIBP	BL	ND	---	BL	BL	BL	BL	BL
Conclusion	PASS	PASS	PASS	PASS	PASS	PASS	PASS	PASS

Test Item(s)	A33	A34	A35	A36	A37	A38	A39	A40
Pb	BL	BL	BL	BL	BL	BL	BL	BL
Hg	BL	BL	BL	BL	BL	BL	BL	BL
Cd	BL	BL	BL	BL	BL	BL	BL	BL
Cr(VI)▼	BL	ND	BL	BL	BL	BL	BL	BL
PBB	BL	---	BL	BL	BL	BL	BL	BL
PBDE	BL	---	BL	BL	BL	BL	BL	BL
DEHP	BL	---	BL	BL	BL	BL	BL	BL
BBP	BL	---	BL	BL	BL	BL	BL	BL
DBP	BL	---	BL	BL	BL	BL	BL	BL
DIBP	BL	---	BL	BL	BL	BL	BL	BL
Conclusion	PASS	PASS	PASS	PASS	PASS	PASS	PASS	PASS

Test Item(s)	A41	A42	A43
Pb	BL	BL	BL
Hg	BL	BL	BL
Cd	BL	BL	BL
Cr(VI)▼	BL	BL	BL
PBB	BL	BL	BL
PBDE	BL	BL	BL
DEHP	BL	ND	BL
BBP	BL	ND	BL
DBP	BL	ND	BL
DIBP	BL	ND	BL
Conclusion	PASS	PASS	PASS



Notes:

(1) Interpretation of screening results by X-ray fluorescence spectrometry (XRF):

(a) Screening limits in mg/kg for regulated elements in various matrices according to IEC 62321-3-1:2013 Annex A as below table.

Element	Polymers	Metals	Composite Materials
Cd	$BL \leq (70-3\sigma) < X < (130+3\sigma) \leq OL$	$BL \leq (70-3\sigma) < X < (130+3\sigma) \leq OL$	$LOD < X < (150+3\sigma) \leq OL$
Pb	$BL \leq (700-3\sigma) < X < (1300+3\sigma) \leq OL$	$BL \leq (700-3\sigma) < X < (1300+3\sigma) \leq OL$	$BL \leq (500-3\sigma) < X < (1500+3\sigma) \leq OL$
Hg	$BL \leq (700-3\sigma) < X < (1300+3\sigma) \leq OL$	$BL \leq (700-3\sigma) < X < (1300+3\sigma) \leq OL$	$BL \leq (500-3\sigma) < X < (1500+3\sigma) \leq OL$
Br	$BL \leq (300-3\sigma) < X$	Not applicable	$BL \leq (250-3\sigma) < X$
Cr	$BL \leq (700-3\sigma) < X$	$BL \leq (700-3\sigma) < X$	$BL \leq (500-3\sigma) < X$

(b) If the maximum allowed level restricts PBB/PBDE and Cr(VI) rather than Br and Cr, the exceptions are the XRF determinations of Br and Cr. If the quantitative results for the elements Br and/or Cr are higher than the limit (for Br calculated based on the stoichiometry of Br in the most common congeners of PBB/PBDE), the sample is "inconclusive".

(c) Results are obtained by EDXRF for primary screening, LOD = Limit of Detection, BL = Below Limit, OL= Over Limit, IN (The symbol X marks the region)=Inconclusive, where further investigation is necessary, and further chemical testing by ICP-OES (for Cd, Pb, Hg), UV-Vis (for Cr(VI)) and GC-MS (for PBB/PBDE) are recommended to be performed.

(d) The EDXRF screening test for elements – The reading may be different to the actual content in the sample be of non-uniformity composition.

(2) Screening results of Phthalates (PHTH) below the limits are shown as "BL". Further chemical testing by GC-MS is to be performed if the results exceed limits.

Test Items	CAS No.
Bis(2-ethylhexyl) phthalate (DEHP)	117-81-7
Butyl benzyl phthalate (BBP)	85-68-7
Dibutyl phthalate (DBP)	84-74-2
Diisobutyl phthalate (DIBP)	84-69-5

(3) Interpretation of results by chemical tests:

(a) mg/kg = 0.0001%, MDL=Method detection Limit, ND = Not Detected (<MDL), --- = Not Applicable.

(b) Unit and MDL in wet chemical test

Test Items	Pb	Hg	Cd	DEHP	BBP	DBP	DIBP
Unit	mg/kg	mg/kg	mg/kg	mg/kg	mg/kg	mg/kg	mg/kg
MDL	10	10	10	100	100	100	100

The MDL for single compound of PBB and PBDE is 100 mg/kg,
MDL of Cr(VI) for polymer, composite and leather sample is 10 mg/kg.
MDL of Cr(VI) for metal sample is 0.10 µg/cm².

(c) ▼ =Metal sample

a. The sample is positive for Cr(VI) if the Cr(VI) concentration is greater than 0.13 µg/cm². The sample coating is considered to contain Cr(VI).

b. The sample is negative for Cr(VI) if Cr(VI) is ND (concentration less than 0.10 µg/cm²). The coating is considered a non-Cr(VI) based coating

c. The result between 0.10 µg/cm² and 0.13 µg/cm² is considered to be inconclusive-unavoidable coating variations may influence the determination



Unless otherwise agreed in writing, this document is issued by the Company subject to its General Conditions of Service printed overleaf, available on request or accessible at <https://www.sgs.com/en/Terms-and-Conditions>. Attention is drawn to the limitation of liability, indemnification and jurisdiction issues defined therein. Any holder of this document is advised that information contained hereon reflects the Company's findings at the time of its intervention only and within the limits of Client's instructions, if any. The Company's sole responsibility is to its Client and this document does not exonerate parties to a transaction from exercising all their rights and obligations under the transaction documents. This document cannot be reproduced except in full, without prior written approval of the Company. Any unauthorized alteration, forgery or falsification of the content or appearance of this document is unlawful and offenders may be prosecuted to the fullest extent of the law. Unless otherwise stated the results shown in this test report refer only to the sample(s) tested.
Attention: To check the authenticity of testing /inspection report & certificate, please contact us at telephone: (86-755) 8307 1443, or email: CN.Doccheck@sgs.com

Information on storage conditions and production date of the tested sample is unavailable and thus Cr(VI) results represent status of the sample at the time of testing.

- (4) Restricted substances and maximum concentration values tolerated by weight in homogeneous materials under RoHS Directive: Cd: 0.01%, Pb/Hg/Cr(VI)/PBB/PBDE/DEHP/BBP/DBP/DIBP: 0.1%. The limit is quoted from RoHS Directive (EU) 2015/863.
- (5) IEC 62321 series is equivalent to EN 62321 series.
- (6) Only selected parts in sample photos were tested and drew the conclusion.
- (7) ▲=According to the declaration from the client, Lead (Pb) in No.A8 is exempted by EU RoHS directive 2011/65/EU based on [ANNEX III 7(a)]: Lead in high melting temperature type solders (i.e. lead-based alloys containing 85 % by weight or more lead).
More information about exemption can be found via the following link:
<https://rohs.sgsonline.com.cn/PDFLinks/en/RSTS-TP-037%20RoHS%20Exemption%20%28EN%29.pdf>

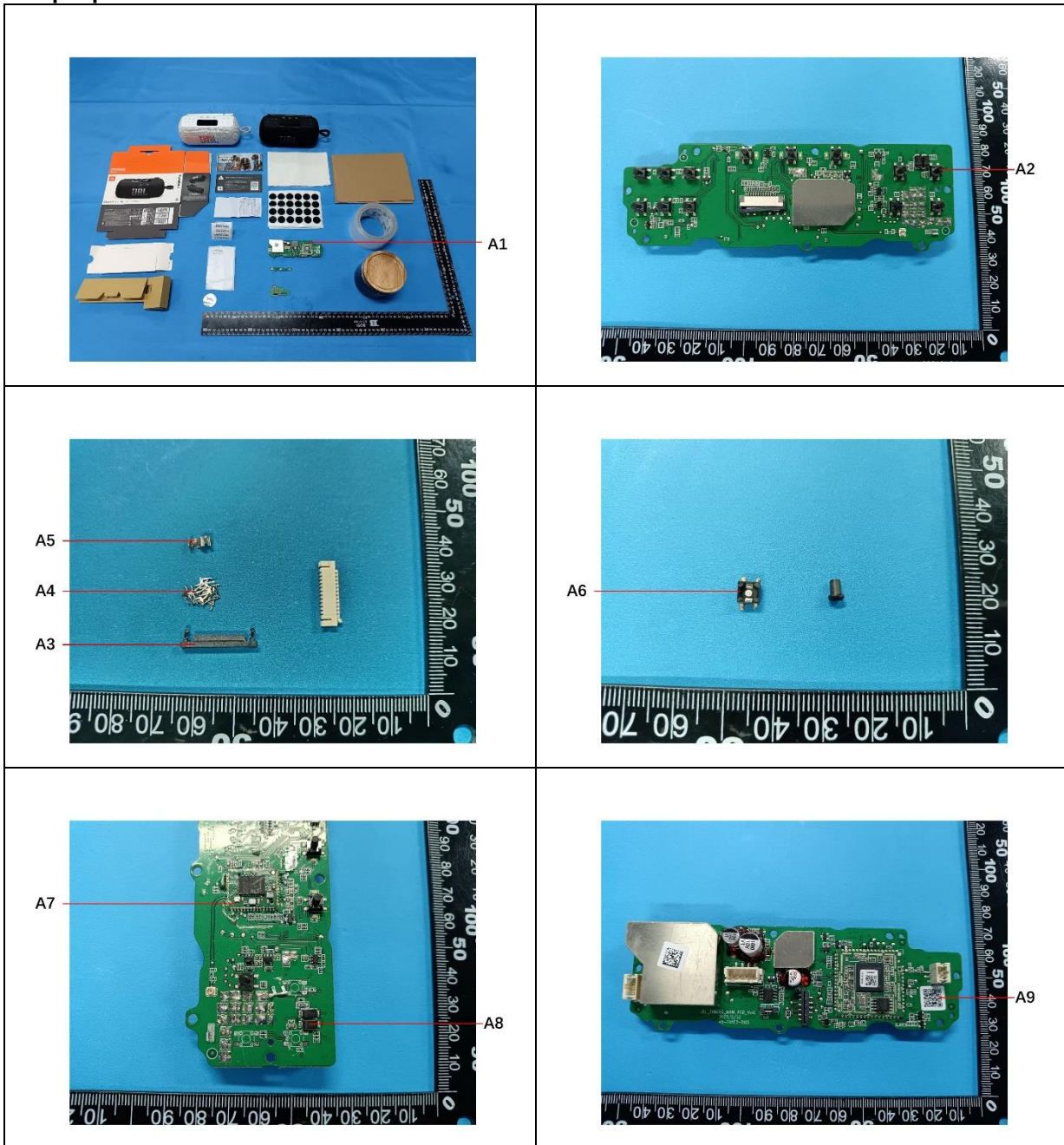
The location of performance of the laboratory activities: A. No.198, Kezhu Road, Science City, Economic & Technological Development Area, Guangzhou, Guangdong; B. Room 101, Building 3, No.1501, Kaichuang Avenue, Huangpu District, Guangzhou, Guangdong

Unless otherwise stated, the decision rule for conformity reporting is based on Binary Statement for Simple Acceptance Rule ($w=0$) stated in ILAC-G8:09/2019.



Unless otherwise agreed in writing, this document is issued by the Company subject to its General Conditions of Service printed overleaf, available on request or accessible at <https://www.sgs.com/en/Terms-and-Conditions>. Attention is drawn to the limitation of liability, indemnification and jurisdiction issues defined therein. Any holder of this document is advised that information contained hereon reflects the Company's findings at the time of its intervention only and within the limits of Client's instructions, if any. The Company's sole responsibility is to its Client and this document does not exonerate parties to a transaction from exercising all their rights and obligations under the transaction documents. This document cannot be reproduced except in full, without prior written approval of the Company. Any unauthorized alteration, forgery or falsification of the content or appearance of this document is unlawful and offenders may be prosecuted to the fullest extent of the law. Unless otherwise stated the results shown in this test report refer only to the sample(s) tested.
Attention: To check the authenticity of testing /inspection report & certificate, please contact us at telephone: (86-755) 8307 1443, or email: CN.Doccheck@sgs.com

Sample photos:



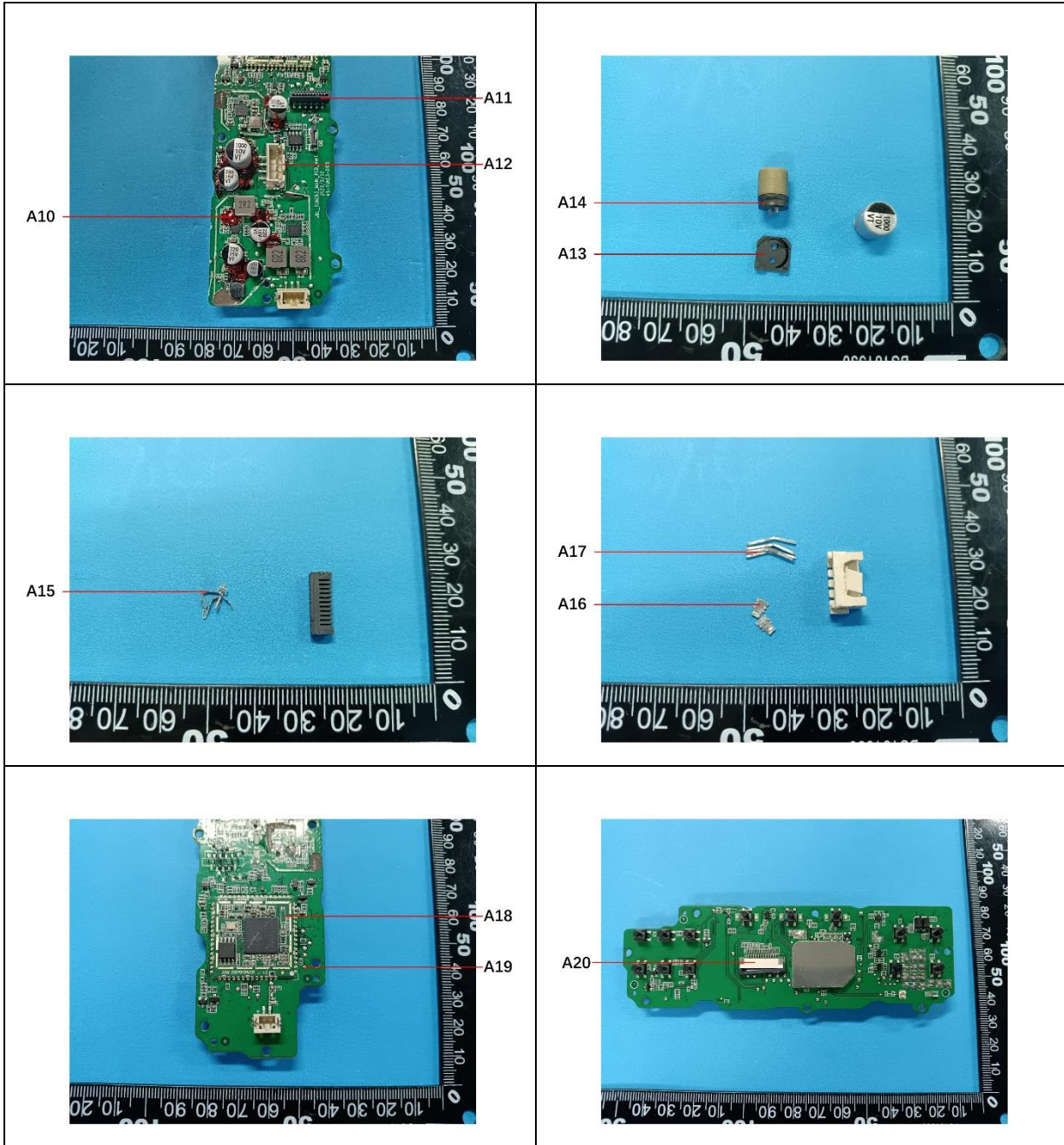
SGS-CSTC Standards Technical Services Co., Ltd.
Guangzhou Branch Technical Laboratory

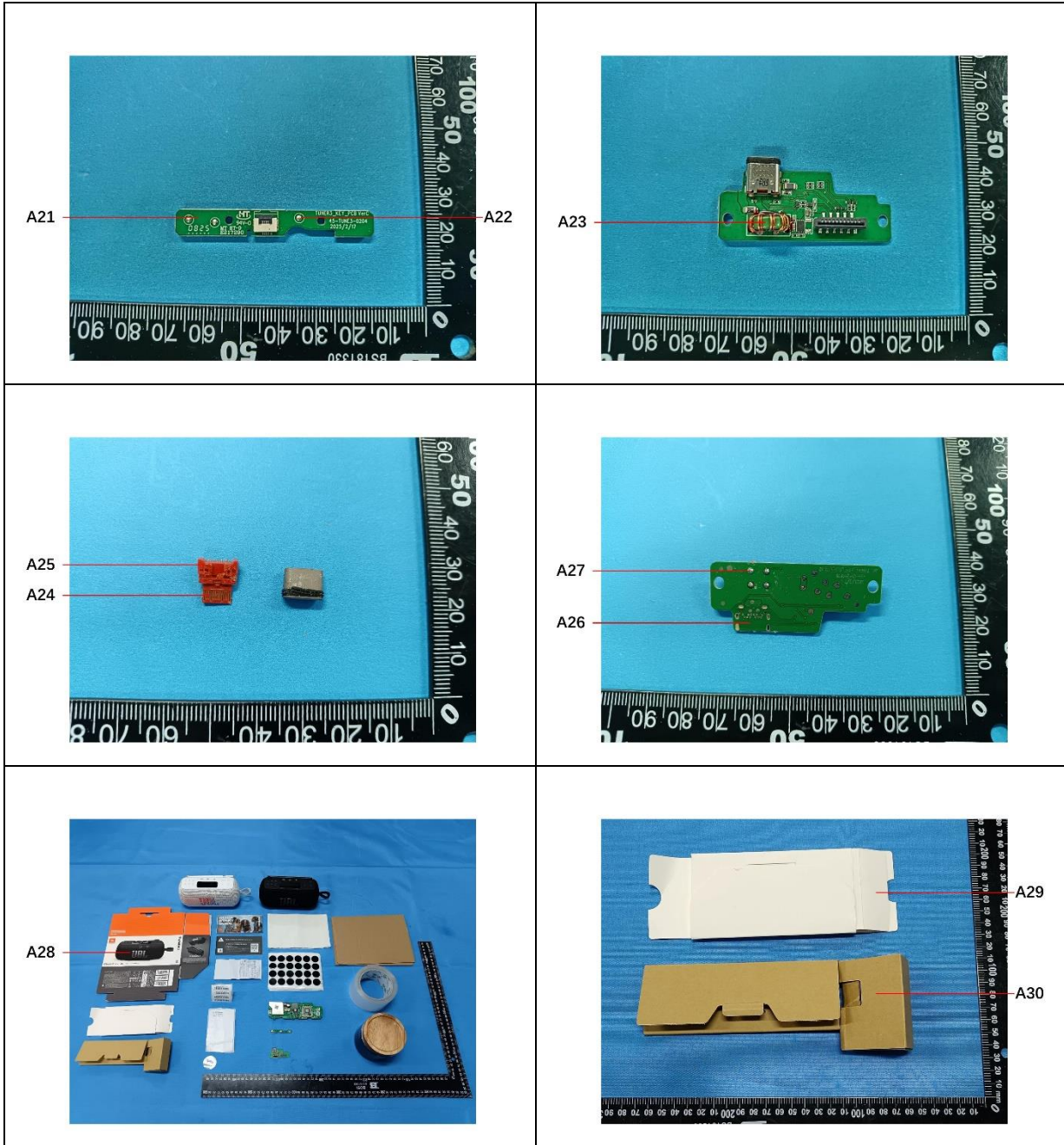
Unless otherwise agreed in writing, this document is issued by the Company subject to its General Conditions of Service printed overleaf, available on request or accessible at <https://www.sgs.com/en/Terms-and-Conditions>. Attention is drawn to the limitation of liability, indemnification and jurisdiction issues defined therein. Any holder of this document is advised that information contained herein reflects the Company's findings at the time of its intervention only and within the limits of Client's instructions, if any. The Company's sole responsibility is to its Client and this document does not exonerate parties to a transaction from exercising all their rights and obligations under the transaction documents. This document cannot be reproduced except in full, without prior written approval of the Company. Any unauthorized alteration, forgery or falsification of the content or appearance of this document is unlawful and offenders may be prosecuted to the fullest extent of the law. Unless otherwise stated the results shown in this test report refer only to the sample(s) tested.

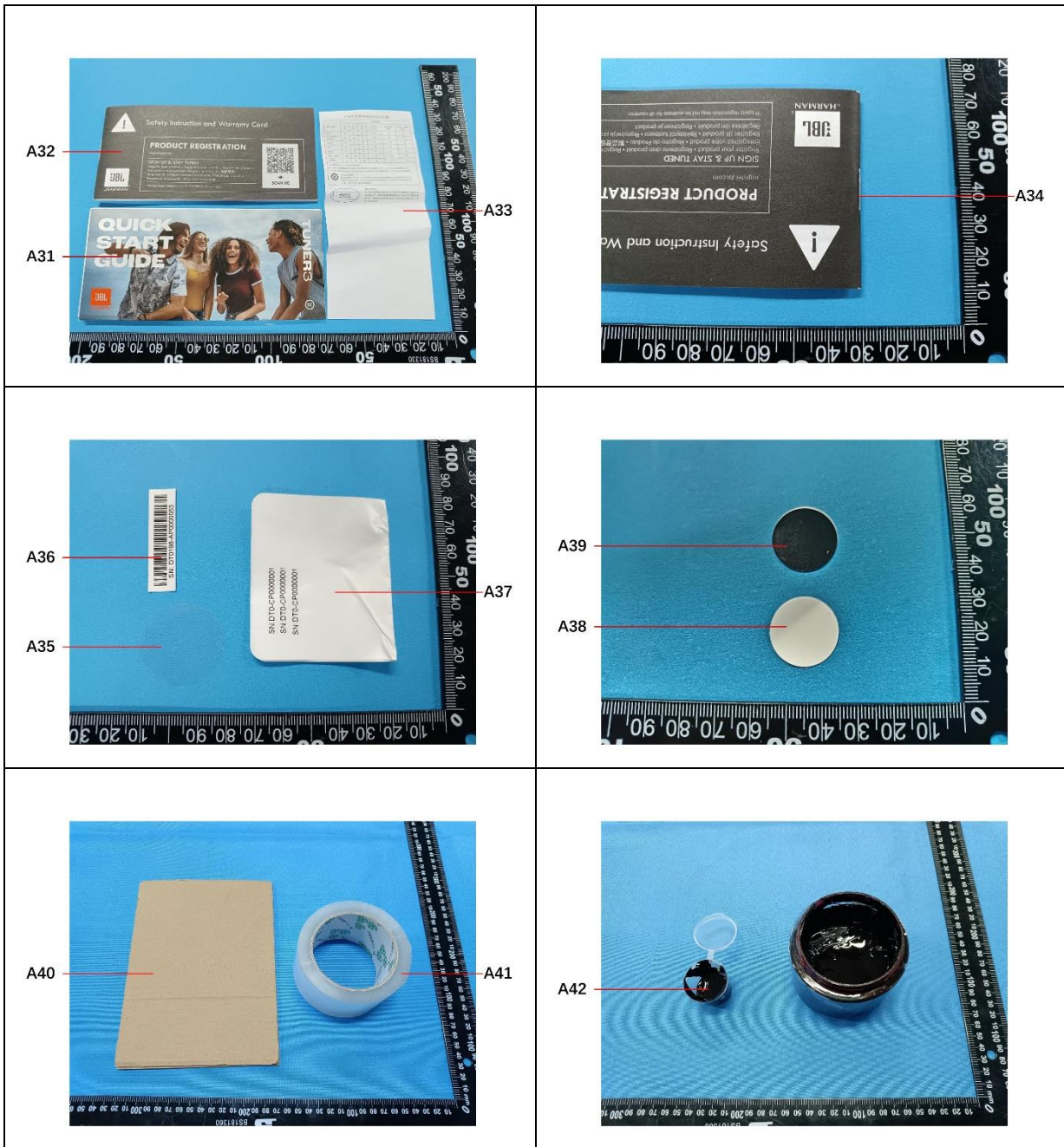
Attention: To check the authenticity of testing / inspection report & certificate, please contact us at telephone: (86-755) 8307 1443, or email: CN.Doccheck@sgs.com

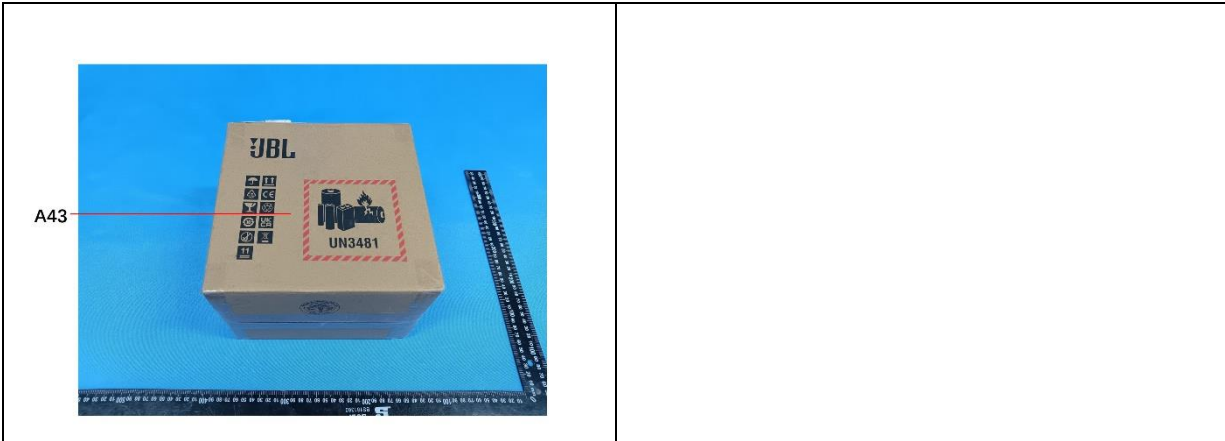
No.198, Kezhu Road, Science City, Economic & Technological Development Area, Guangzhou, Guangdong, China 510663
中国·广东·广州高新技术产业开发区科学城科珠路198号 邮编: 510663

t (86-20) 82155555 www.sgs.com.cn
t (86-20) 82155555 sgs.china@sgs.com









SGS authenticate the photo on original report only
 *** End of Report ***



SGS-CSTC Standards Technical Services Co., Ltd.
 Guangzhou Branch Technical Laboratory

Unless otherwise agreed in writing, this document is issued by the Company subject to its General Conditions of Service printed overleaf, available on request or accessible at <https://www.sgs.com/en/Terms-and-Conditions>. Attention is drawn to the limitation of liability, indemnification and jurisdiction issues defined therein. Any holder of this document is advised that information contained hereon reflects the Company's findings at the time of its intervention only and within the limits of Client's instructions, if any. The Company's sole responsibility is to its Client and this document does not exonerate parties to a transaction from exercising all their rights and obligations under the transaction documents. This document cannot be reproduced except in full, without prior written approval of the Company. Any unauthorized alteration, forgery or falsification of the content or appearance of this document is unlawful and offenders may be prosecuted to the fullest extent of the law. Unless otherwise stated the results shown in this test report refer only to the sample(s) tested.
Attention: To check the authenticity of testing /inspection report & certificate, please contact us at telephone: (86-755) 8307 1443, or email: CN.Doccheck@sgs.com

No.198, Kezhu Road, Science City, Economic & Technological Development Area, Guangzhou, Guangdong, China 510663
 中国·广东·广州高新技术产业开发区科学城科珠路198号 邮编: 510663

t (86-20) 82155555 www.sgsgroup.com.cn
 t (86-20) 82155555 sgs.china@sgs.com