

Vacuum cleaner

User manual

SC07M31****, SC05M31**** Series

- Before operating this unit, please read the instructions carefully.
- For indoor use only.



SAMSUNG

Contents

PREPARATION

| | |
|-------------------------------|---|
| Safety information | 3 |
| Important safety instructions | 4 |

INSTALLATION

| | |
|-------------------|----|
| Name of the parts | 10 |
| Accessories | 11 |

OPERATIONS

| | |
|--------------------------|----|
| Using the vacuum cleaner | 12 |
| Using the body | 12 |
| Using the handle | 12 |
| Using the brushes | 13 |

MAINTENANCE

| | |
|----------------------------|----|
| Cleaning and maintaining | 14 |
| When to empty the dustbin | 14 |
| Cleaning the dustbin | 14 |
| Cleaning the dust filter | 15 |
| Cleaning the outlet filter | 15 |
| Cleaning the pipe | 15 |
| Cleaning the brush | 16 |
| Cleaning the hose | 16 |
| Storing the vacuum cleaner | 16 |

APPENDICES

| | |
|--------------------------|----|
| Notes and cautions | 17 |
| In use | 17 |
| Cleaning and maintenance | 17 |
| Troubleshooting | 19 |
| Product information | 20 |

Safety information

- Before operating the appliance, please read this manual thoroughly and retain it for your reference.
- Because these following operating instructions cover various models, the characteristics of your vacuum cleaner may differ slightly from those described in this manual.

Caution/Warning symbols used

WARNING

Indicates that a danger of death or serious injury exists.

CAUTION

Indicates that a risk of personal injury or material damage exists.

Other symbols used

NOTE

Indicates that the following text contains additional important information.

- For information on Samsung's environmental commitments and product regulatory obligations, e.g. REACH, visit our sustainability page available via www.samsung.com

Important safety instructions

When using an electrical appliance, basic precautions should be observed, including the following:

WARNING

This vacuum cleaner is designed for household use only.

Use the vacuum cleaner only for its intended use as described in these instructions.

Always install the filters in the correct position as shown in this manual.

Failure to meet these requirements could cause damage to the internal parts and void your warranty.

Please contact the manufacturer or service agent for a replacement.

General

- Read all instructions carefully. Before switching on, make sure that the voltage of your electricity supply is the same as that indicated on the rating plate on the bottom of the cleaner.
- This appliance can be used by children aged from 8 years and above and persons with reduced physical, sensory or mental capabilities or lack of experience and knowledge if they have been given supervision or instruction concerning use of the appliance in a safe way and understand the hazards involved. Children shall not play with the appliance. Cleaning and user maintenance shall not be made by children without supervision.
- Children should be supervised to ensure that they do not play with the appliance. Do not allow the vacuum cleaner to run unattended at any time.

Power related

- Switch the vacuum cleaner off on the body of the machine before unplugging from the electrical outlet. Disconnect the plug from the electrical outlet before emptying the dustbin. To avoid damage, please remove the plug by grasping the plug itself, not by pulling on the cord.
- The plug must be removed from the socket outlet before cleaning or maintaining the appliance.
- The use of an extension cord is not recommended.
- Please prevent any risk of electric shock or fire.
 - Do not damage the power cord.
 - Do not pull the power cord too hard or touch the power plug with wet hands.
 - Do not use a power source other than the national rated voltage and also do not use a multi-outlet to supply power to number of devices at the same time.
 - Do not leave the power cord carelessly on the floor.
 - Do not use a damaged power plug, power cord or loose power outlet.
 - Turn off the power before connecting or disconnecting the power plug to the power outlet and make sure your fingers don't come in contact with the pins of the power plug.
 - Do not disassemble or modify the vacuum cleaner. When power cord is damaged, contact the manufacturer or service agent to get it replaced by certified repairman.
 - Clean dust or any foreign matters on the pin and contact part of the power plug.

-
- Unplug the cleaner when not in use. Turn off the power switch before unplugging.
 - If the supply cord is damaged, it must be replaced by the manufacturer or its service agent or a similarly qualified person in order to avoid a hazard.

In use

- Don't carry the vacuum cleaner by holding the hose. Use the handle on the vacuum cleaner set for lifting or carrying vacuum cleaner.
- Unplug the cleaner when not in use. Turn off the power switch before unplugging.
- Do not use outdoors, or on wet rugs or surfaces.
- Do not use this product outdoors since it's designed for household use only.
 - There is a risk of malfunction or damage.
 - * Outdoor cleaning : Stone, Cement
 - * A billiard room : Powder of a chalk
 - * An aseptic room of a hospital
- Do not use the vacuum cleaner to suction up liquids(such as water), blades, pins or embers.
 - There is a risk of malfunction or damage.
- Be sure children do not touch the vacuum cleaner when you use it.
 - The children may get burned if the body is overheated.
- Do not mount or make any physical impacts on the body.
 - It may result in injury or damage.

-
- Do not use the vacuum cleaner to pick up matches, live ashes or cigarette butts. Keep the vacuum cleaner away from stoves and other heat sources. Heat can deform and discolour the plastic parts of the unit.
 - Avoid picking up hard, sharp objects with the vacuum cleaner as they may damage the cleaner parts.
 - Do not block the suction or the exhaust port.
 - Do not use the vacuum cleaner without a dustbin and filters in place.
 - Do not use worn, deformed or damaged filters. Insert filter properly.
 - It can be a reason of penetration of dust and debris into motor.
 - If there's any gas leak or when using combustible sprays such as a dust remover, do not touch the power outlet and open the windows to ventilate the room.
 - There is a risk of explosion or fire.
 - Do not use this vacuum cleaner to clean building waste and debris, toner of laser printer. Regularly keep the filters in clean conditions to prevent of collecting fine dust in them.
 - Dry carpet cleaners or fresheners, powders and fine dust such as flour should be only vacuumed in very small amounts.
 - Use extra care when cleaning on stairs.
 - Do not use to suction up water.
 - Do not immerse in water for cleaning.
 - The hose should be checked regularly and must not be used if damaged.
 - Hold plug when rewinding onto cord reel. Do not allow plug to whip when rewinding.

Cleaning and maintenance

- Do not lift or carry the vacuum cleaner putting a brush in the groove for storage.
- Never twist dust filter after washing.
 - It can be a reason of deformation or damage filter.
- Use a dry cloth or towel to clean the body and make sure to unplug the vacuum cleaner before cleaning. Do not spray water directly or use volatile materials (such as benzen, thinner or alcohol) or combustible sprays (such as a dust remover) for cleaning.
 - If water or other liquid gets into the product and causes malfunction, turn off the vacuum cleaner, unplug the power plug and then consult a service agent.
- Do not use alkaline or industrial detergents, air fresheners or (acetic) acids to clean the washable parts of the vacuum cleaner. (Refer to the following table.)
 - It may cause damage, deformation or discoloration of the plastic parts.

| | | |
|-----------------------|----------------------|--|
| The washable parts | | Dustbin of the body, Dust filter |
| Available detergent | Neutral detergent | Kitchen cleaner |
| Unavailable detergent | Alkaline detergent | Bleach, Mold cleaner, etc. |
| | Acid detergent | Paraffin oil, Emulsifier, etc. |
| | Industrial detergent | NV-I, PB-I, Opti, Alcohol, Acetone, Benzene, Thinner, etc. |
| | Air freshener | Air freshener(Spray) |
| | Oil | Animal or vegetable oil |
| | Etc. | Edible acetic acid, Vinegar, Glacial acetic acid, etc. |

- Do not stand on the hose assembly. Do not put weight on the hose.

⚠ CAUTION**In use**

- Do not use the pipe for anything other than its intended purpose.
 - It may result in injury or damage.
- Do not pull the power cord fully and hold the power cord with one hand when rewinding it.
 - If you try to pull it fully, power cord can be damaged and if you don't hold the power cord while rewinding, it may lose control and cause injury or damage to people or objects around it.
- If any abnormal sounds, smells or smoke come from the vacuum cleaner, immediately unplug the power plug and contact a service agent.
 - There is a risk of fire or electric shock.
- Do not use the vacuum cleaner in any places near heating appliances (such as stove), combustible spray or flammable materials.
 - It may cause fire or deformation of the product.
- Empty the dustbin before it is full in order to maintain the best efficiency.

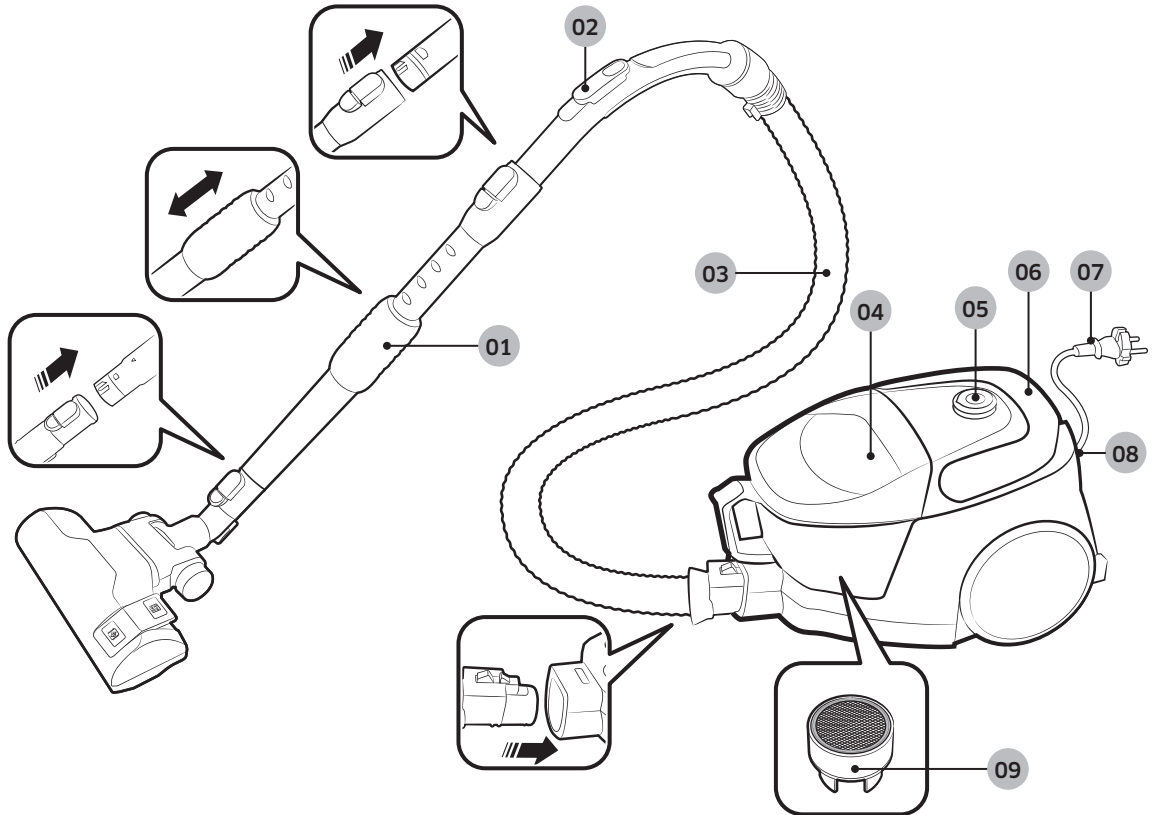
Cleaning and maintenance

- Unplug the vacuum cleaner if you do not use it for a long time.
 - It may cause electric shock or fire.

Name of the parts

Product design may differ depending on the models.

INSTALLATION

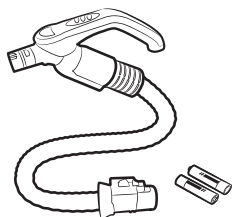


- 01 Pipe
- 02 Handle control
- 03 Hose
- 04 Dustbin
- 05 Power button

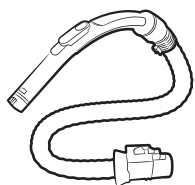
- 06 Cord rewind button / Carry handle
- 07 Power cord
- 08 Outlet filter
- 09 Anti-Tangle Turbine (Cyclone Force)

Accessories

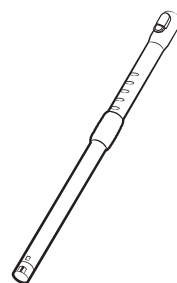
Accessories may differ depending on the models.



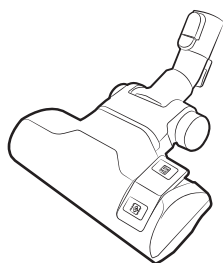
Hose



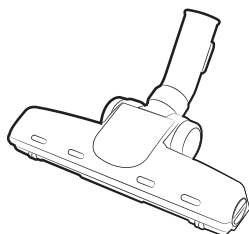
Hose



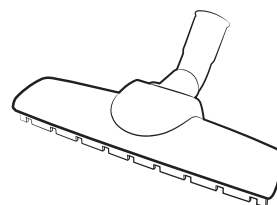
Pipe



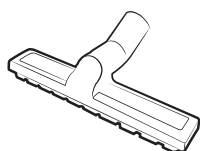
2-step brush



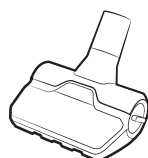
Pet Brush



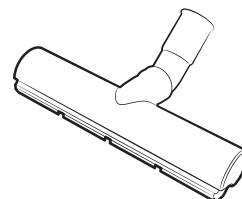
Parquet master



Porch brush



Anti-Tangle tool/Mini Pet Care Tool



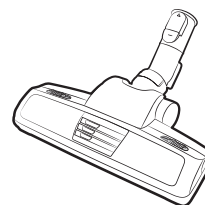
Eco Hard Floor



2-in-1 accessory



User manual



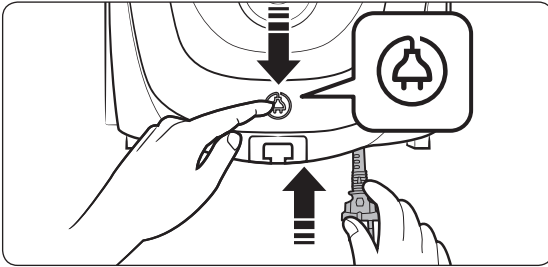
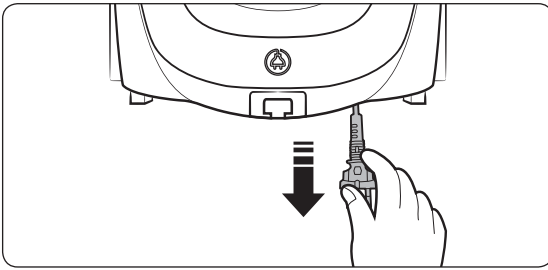
Power pet plus / Pet Care Brush

Using the vacuum cleaner

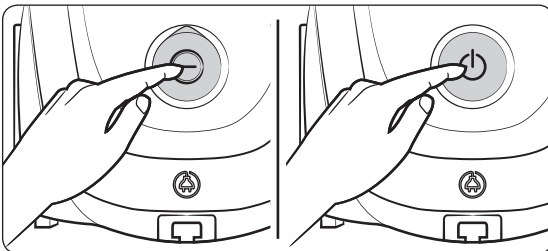
Suction control may differ depending on the models.

Using the body

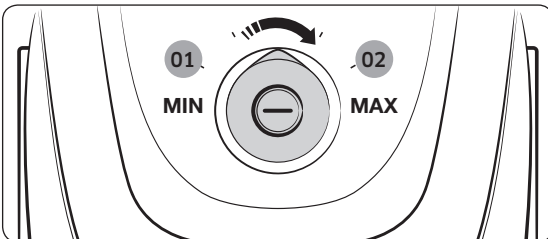
Power cord



On/Off

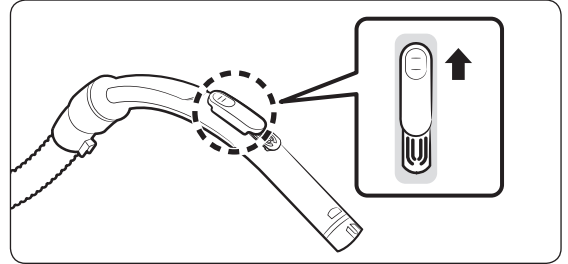


Suction control



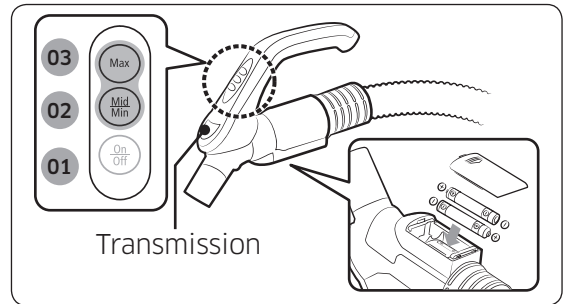
- 01 Low suction power
- 02 High suction power

Using the handle



NOTE

- To vacuum fabrics, push the cover downward to reduce suction.
- The handle does not control the power of the product.

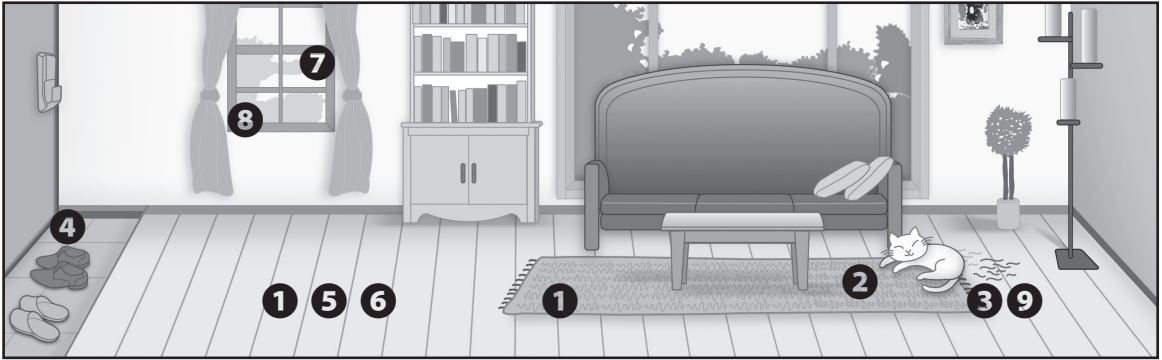


- 01 Power ON/OFF
- 02 Minimum / Medium suction power
- 03 Maximum suction power

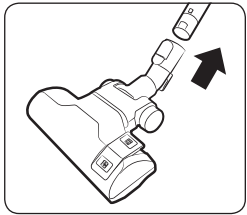
NOTE

- Do not cover the transmission with a hand. If it is blocked, the product will not work.

Using the brushes



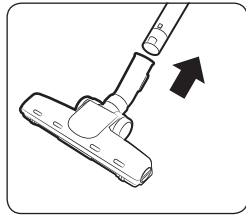
Where to use the brushes



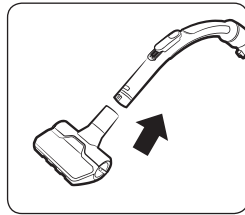
1 2-step brush

*  Floor

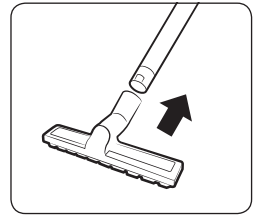
 Carpet



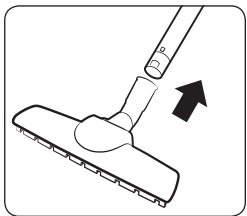
2 Pet brush



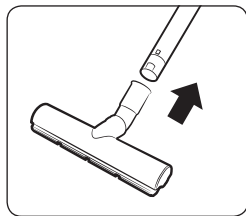
3 Anti-Tangle tool/
Mini Pet Care
Tool



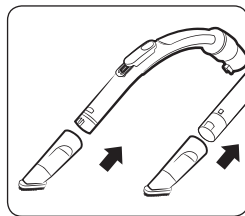
4 Porch brush



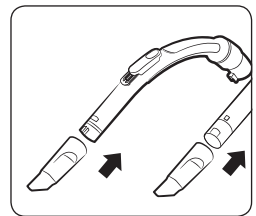
5 Parquet master



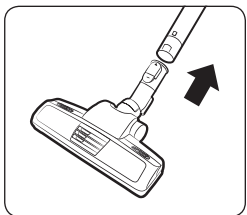
6 Eco Hard Floor



7 Dusting brush



8 Crevice tool

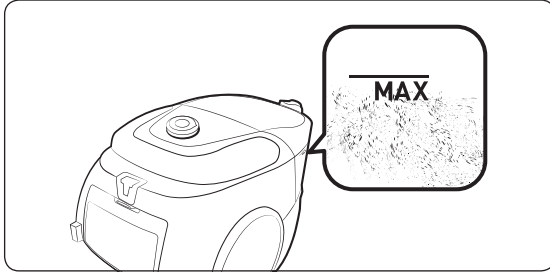


9 Power pet plus/
Pet Care Brush

Cleaning and maintaining

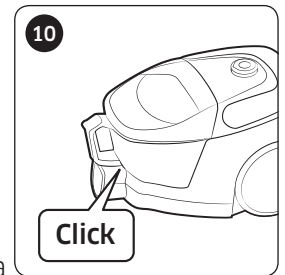
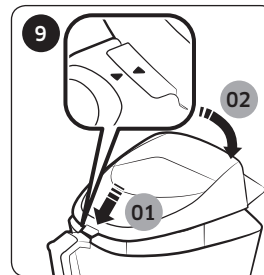
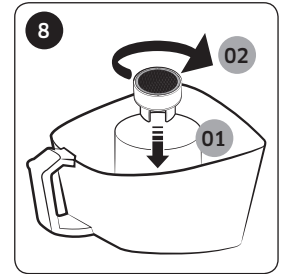
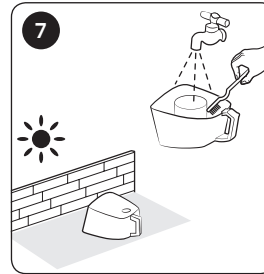
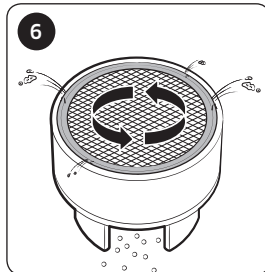
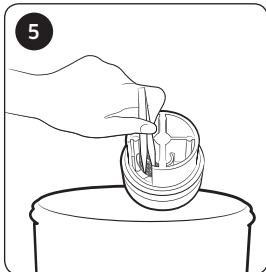
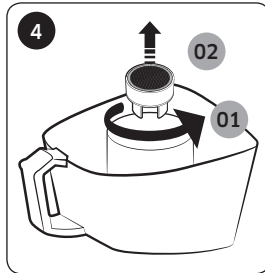
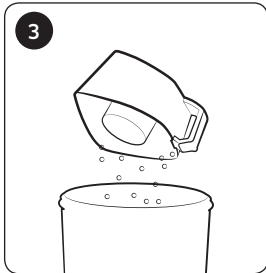
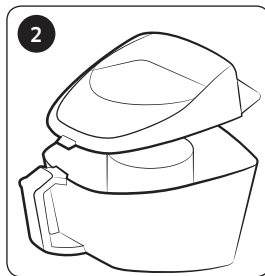
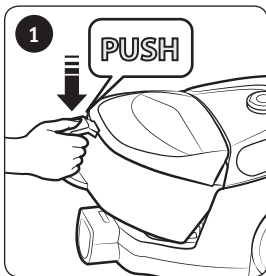
You must unplug the vacuum cleaner before cleaning it.

When to empty the dustbin



Cleaning the dustbin

Clean the dustbin if there is a lot of dust in the bin.



* Anti-Tangle Turbine(Cyclone Force)

- Based on internal testing. Tested at the turbine fan using a mix of hair, pet hair on Floor.

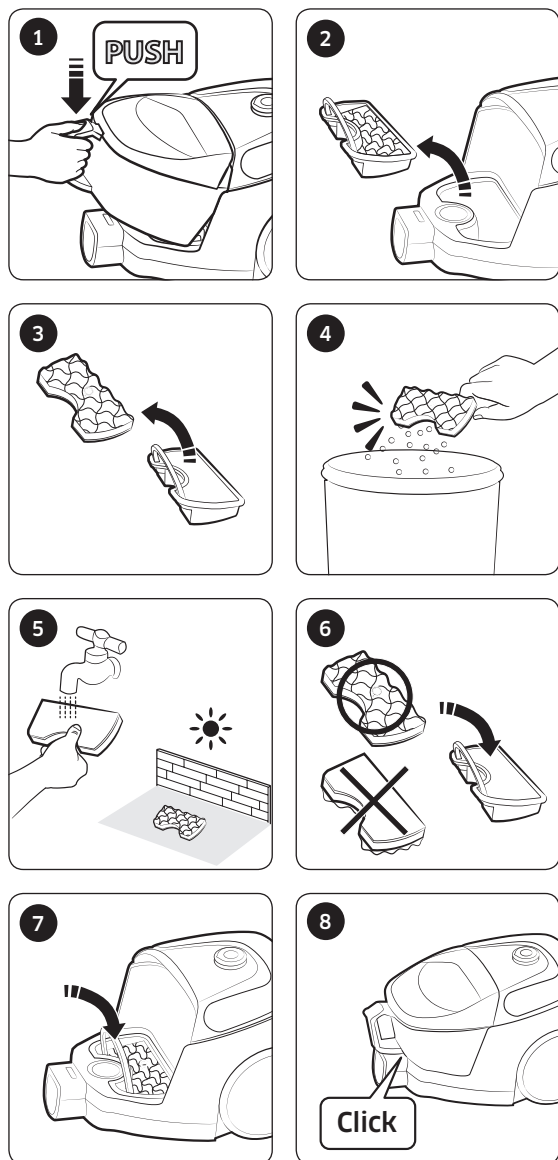
⚠ CAUTION

- If tool is required for cleaning, please be careful not to damage the mesh.

How to empty the dustbin easily



Cleaning the dust filter

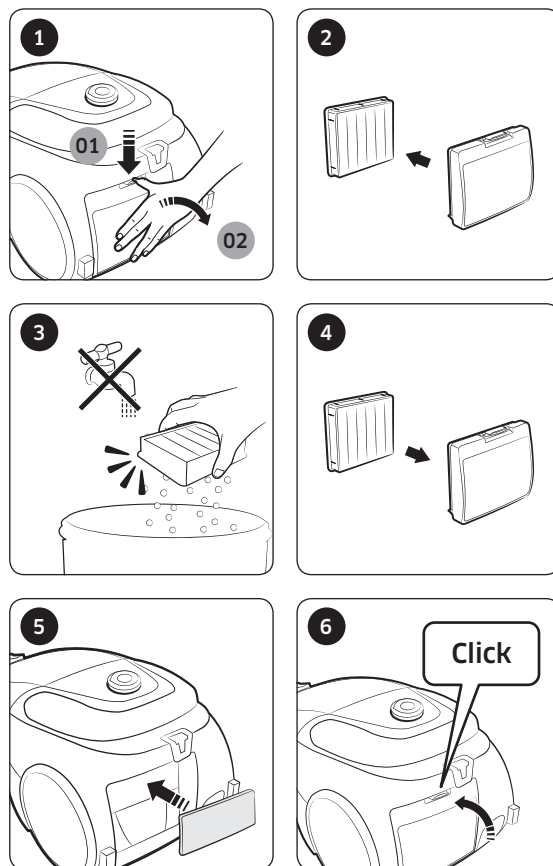


⚠ CAUTION

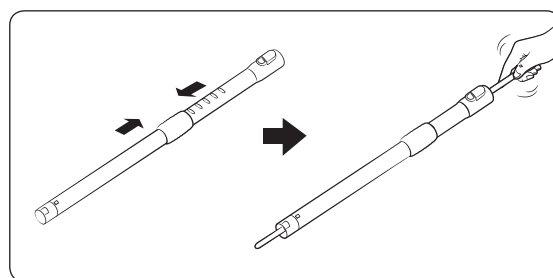
- Make sure the dust filter is completely dry before putting it back into the vacuum cleaner. Allow 12 hours for it to dry.



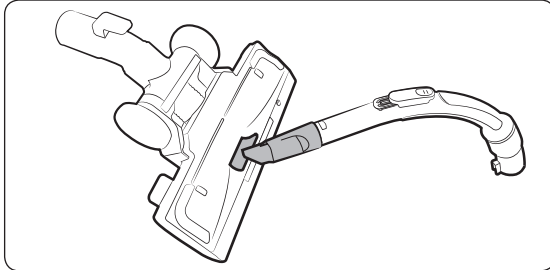
Cleaning the outlet filter



Cleaning the pipe

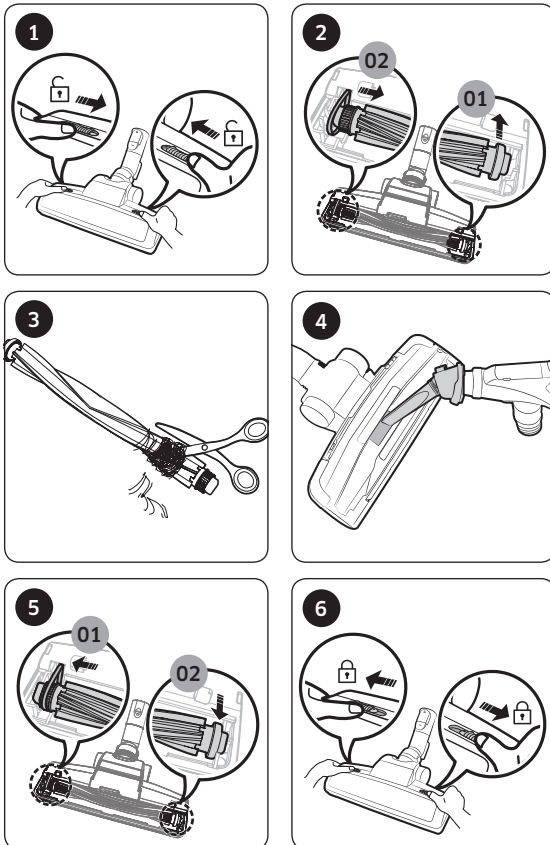
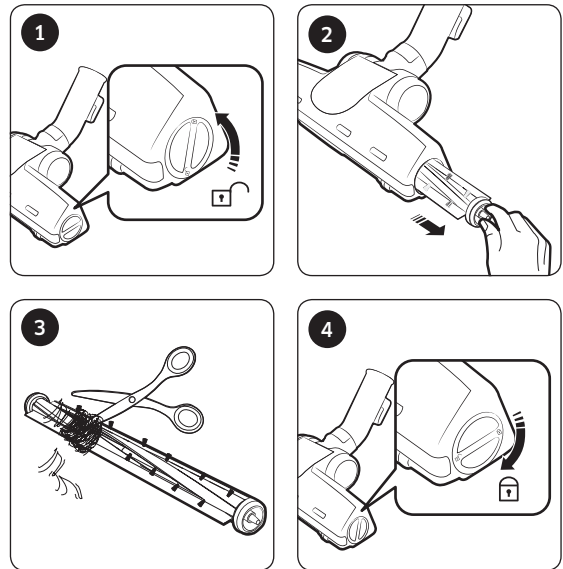


Cleaning the brush



2-step brush

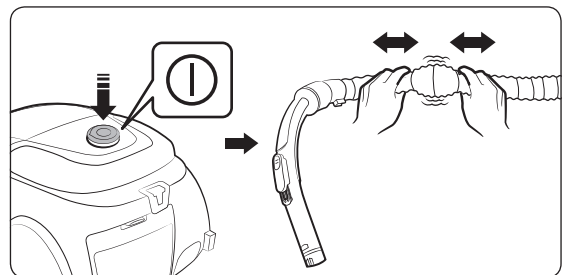
* Cleaning method for the [2-step brush], [Parquet master], [Anit-Tangle tool/Mini Pet Care Tool], [Eco Hard Floor] and [Porch brush] is the same.



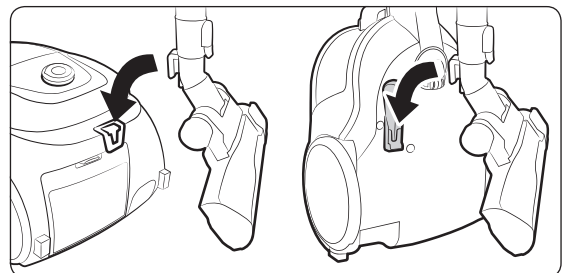
Power pet plus/Pet Care Brush

Pet brush

Cleaning the hose



Storing the vacuum cleaner



Notes and cautions

In use

NOTE

- Product features may vary according to model.
- If the handle control is not working, the vacuum cleaner can be operated using the [Power] button on the body.
- When you use the dusting brush or crevice tool, you may feel vibration from the vacuum cleaner.
- When the vacuum cleaner does not work, replace the batteries. If the problem persists, please contact our authorized dealer. Use 2 batteries of size AA.

CAUTION

- When removing the power plug from the electrical outlet, grasp the plug, not the cord.
- Please do not press the button of dustbin handle when carrying the vacuum cleaner.
- For storage of the product, park the floor nozzle in the small groove on the bottom of the body.

Cleaning and maintenance

NOTE

- To clean the dust filter, add neutral detergent into lukewarm water and soak the filter for 30 minutes before washing it.
- Do not wash the outlet filter with water.
- To maintain the best performance of the outlet filter, replace it once a year.
- To prevent floors from scratches, inspect condition of the brush and replace it if it is worn down.
- Replacement filters are available at your local Samsung service agent.
- Hold the power cord and then press the Cord rewind button since you can get injured if the power cord may lose control while rewinding it.
- If the power cord is not rewinding well, press the Cord rewind button again after pulling the power cord about 2 ~ 3 m.
- To empty and clean the dustbin, you may rinse the dustbin with cold water.
- When suction power is noticeably reduced continuously, please clean the dust filter by referring to the "Cleaning the dust filter" section.

⚠ CAUTION

- Make sure the dust filter is completely dry before putting it back into the vacuum cleaner.
 - Allow 12 hours for it to dry.
- Dry the dust filter in the shade, not under sunlight, to prevent transformation or discoloration.
- When suction is noticeably reduced continuously or vacuum cleaner abnormally overheats, please clean the outlet filter.
- Suction may reduce noticeably due to wrong reassembling of the dust filter.
- Please contact a nearest service agent if you cannot remove foreign matters from the hose.
- Store the vacuum cleaner in the shade to prevent deformation or discoloration.
- When changing the batteries of the vacuum cleaner, please follow the instructions below.
 - Never disassemble or recharge the batteries.
 - Never heat up the batteries or throw them into fire.
 - Do not reverse (+), (-) poles.
 - Dispose of the batteries properly.

Troubleshooting

| Symptom | Checklist |
|--|--|
| Motor does not start. | <ul style="list-style-type: none"> • Check the cable, the power plug and outlet. |
| Suction force is gradually decreasing. | <ul style="list-style-type: none"> • Check if there is any blockage, and remove it if required. • Please check the filters, and if required, clean as illustrated in this manual. <ul style="list-style-type: none"> - If filters are out of condition, replace them with new ones. |
| Cord does not rewind fully. | <ul style="list-style-type: none"> • Pull the power cord out 2 - 3 m and press the Cord rewind button. |
| Body overheating | <ul style="list-style-type: none"> • Check the filters, and clean as illustrated in this manual if required. |
| Static electricity discharge. | <ul style="list-style-type: none"> • Reduce suction. • This may also occur when air in the room is very dry. Ventilate the room so that air humidity becomes normal. |
| During using, stop the unit. | <ul style="list-style-type: none"> • This vacuum cleaner has a special thermostat that protects the motor in case of its overheating. If the vacuum cleaner suddenly shuts off, turn off the switch and unplug the vacuum cleaner. Check the vacuum cleaner for possible source of overheating such as a full dustbin, a blocked hose, pipe, or clogged filter. If these conditions are found, fix them and wait at least 30 minutes before attempting to use the vacuum cleaner. |
| Noise from the vacuum cleaner increases and the suction power is weak. | <ul style="list-style-type: none"> • Disassemble the anti-tangle turbine inside the dustbin and remove dust in it. • After cleaning the anti-tangle turbine, reassemble it correctly in the dustbin. |

- This Vacuum cleaner is approved the following.
 - Electromagnetic Compatibility Directive : 2004/108/EEC
 - Low Voltage Directive : 2006/95/EC

Product information

[English]

According to Commission Regulation (EU) No 666/2013

| | | | | | |
|----------|------------------------------------|--------------------------------|-------------|-------------|-------------|
| A | Supplier | Samsung Electronics Co., Ltd. | | | |
| B | Model | SC07M31**V* | SC07M31**H* | SC05M31**V* | SC05M31**H* |
| C | Annual Energy Consumption (kWh/yr) | 28.0 | 28.0 | 22.0 | 22.0 |
| D | Sound Power Level (dBA) | 80 | 80 | 79 | 79 |
| E | Rated Input Power (W) | 650 | 650 | 500 | 500 |
| F | Type | General purpose vacuum cleaner | | | |

1 Indicative annual energy consumption (kWh per year), based on 50 cleaning tasks. Actual annual energy consumption will depend on how the appliance is used.

2 Measurements for power consumption and performance are based on methods in EN 60312 - 1 and EN 60704.

Notes

- Declared energy efficiency and cleaning performance class on carpet can be met with the enclosed 2-Step Brush.
- When the hard floor has joints and gaps, please use the enclosed "Eco Hard Floor " brush which is designed to meet the energy efficiency and cleaning performance class on hard floor with joints and gaps.
- The values have been determined according to the prescribed measuring process(in accordance with EN60312 - 1).

